

# ANAFI Ai

The 4G robotic UAV

PIX4D SOFTWARE TUNING FOR ANAFI Ai v1.0.1



"Pleasure in the job puts perfection in the work." — Aristotle

Parrot

# Introduction

---

PIX4D software suite processing with ANAFI Ai can be optimized by giving more weight to the unique internal parameters of its 48MP camera than to the external ones. This configuration is particularly interesting to get a better accuracy in simple grid nadir projects without any GCP (Ground Control Point). We describe below how to proceed.

This operation can be done in PIX4Dmatic and PIX4Dmapper, and is automatically done in PIX4Dcloud.

## Summary

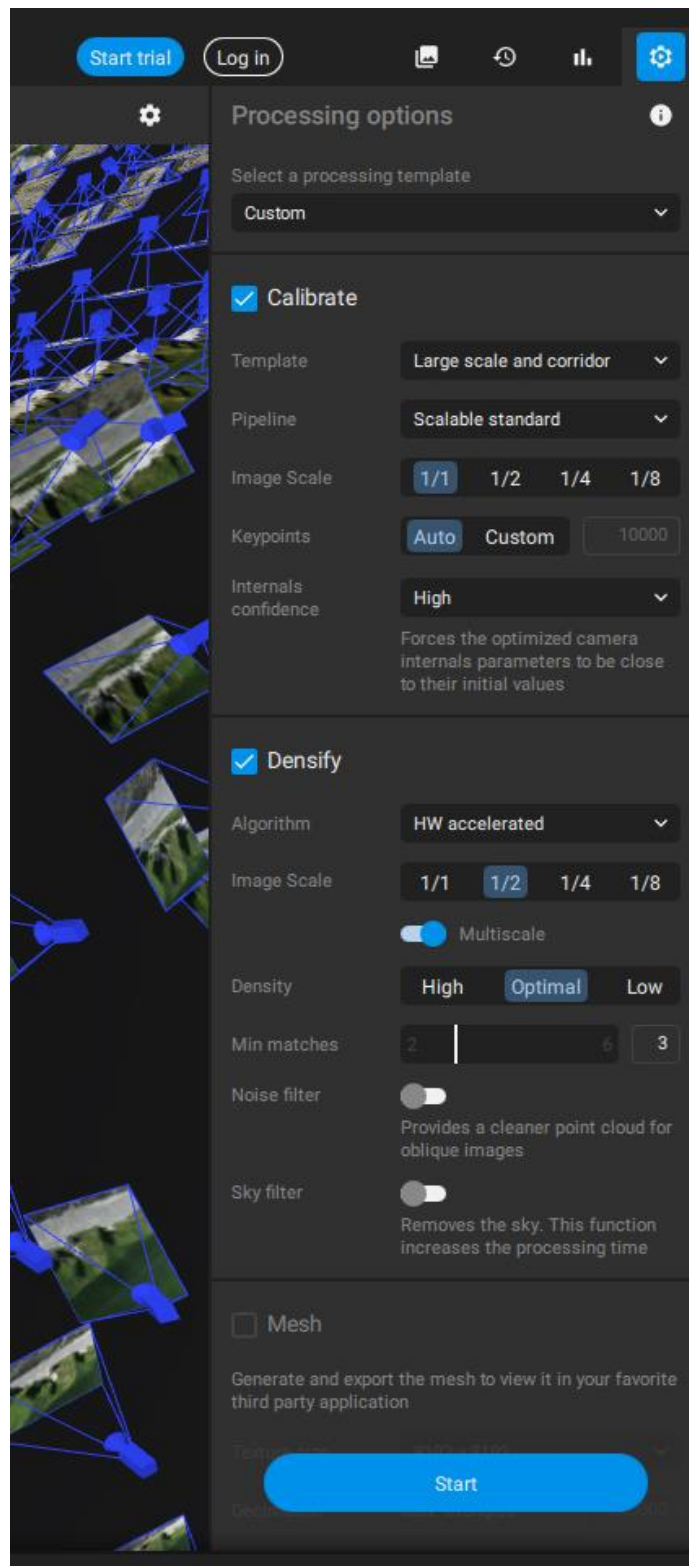
---

Introduction .....	2
Summary .....	2
PIX4Dmatic procedure .....	3
PIX4Dmapper procedure.....	5

# PIX4Dmatic procedure

---

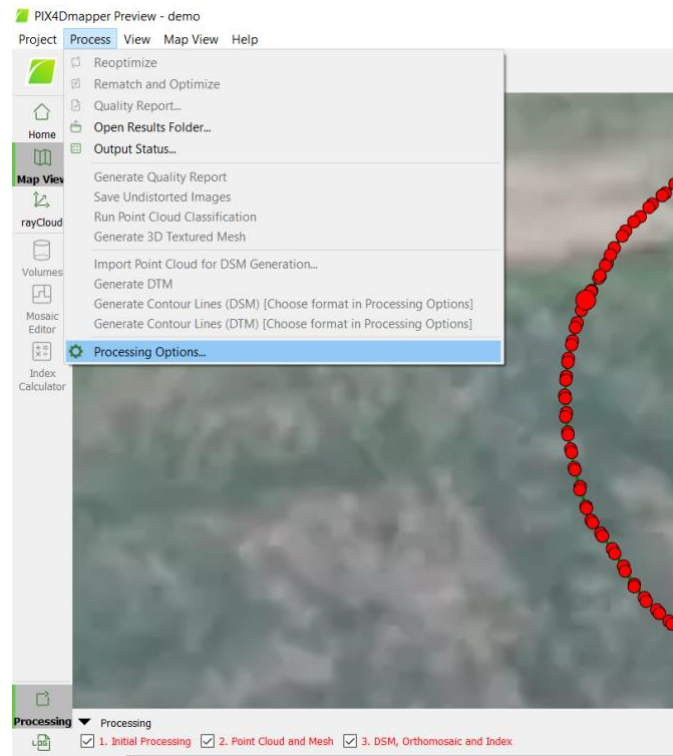
To make PIX4Dmatic give more weight to the unique calibration of your ANAFI Ai camera than to the external parameters, go to the “Processing options” window on the right of the main interface. In the “Calibrate” panel, set the “Internals confidence” setting to “High”. You can now click on “Start” to process the model.



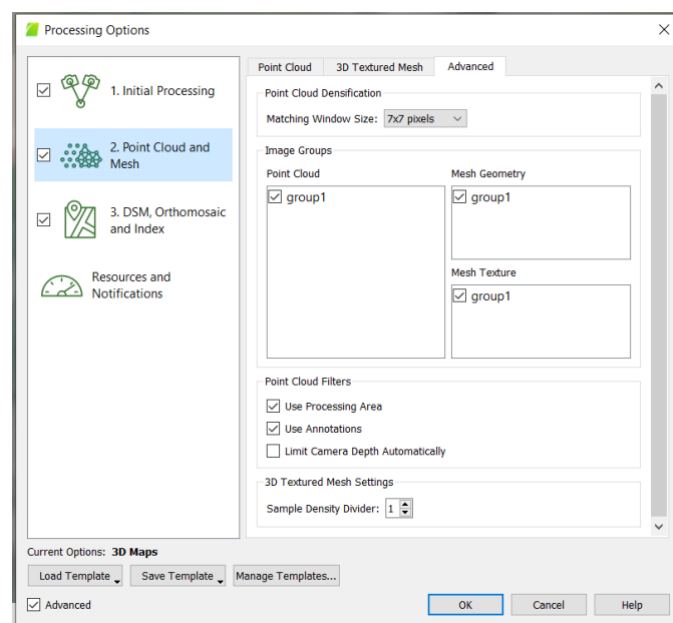
# PIX4Dmapper procedure

To make PIX4Dmapper give more weight to the unique calibration of your ANAFI Ai camera than to the external parameters proceed as follow before launching the model processing:

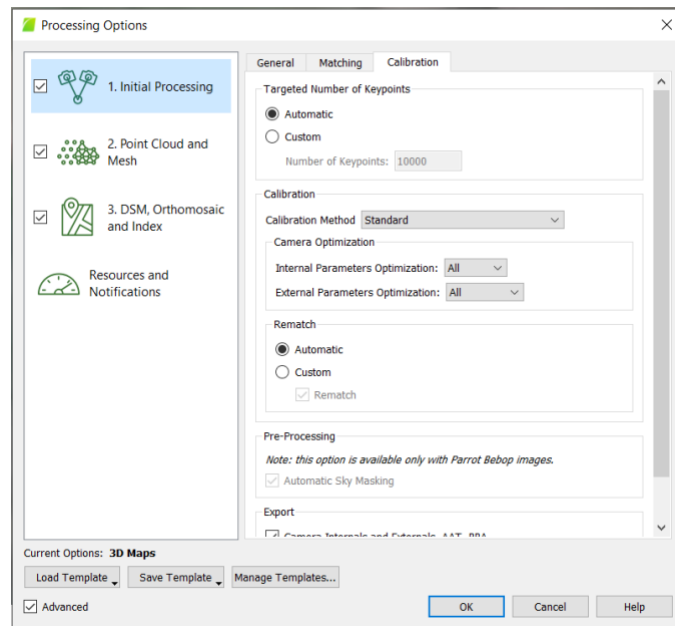
- 1- Click on the "Process" tab then on "Processing Options".



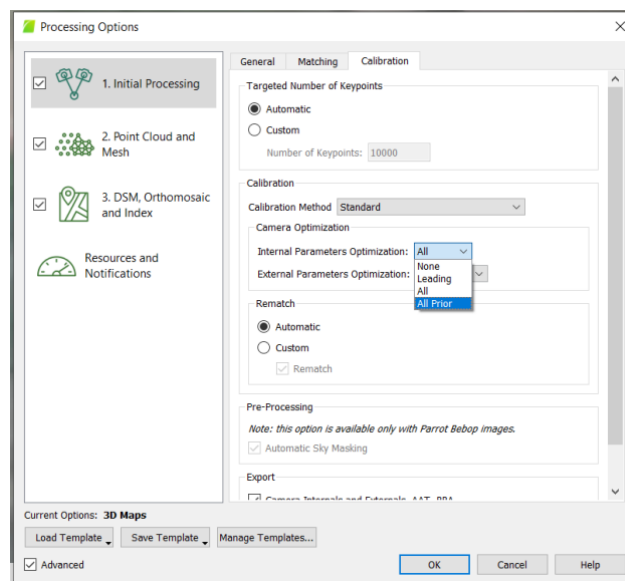
- 2- Activate the "Advanced" option by clicking on the checkbox at the bottom of the Processing Options window.



- 3- Click on "Ok". Two additional tabs appeared in "1. Initial Processing" section: "Matching" and "Calibration".



- 4- In the "Calibration" section, select "All prior" in the drop-down menu from "Internal Parameters Optimization".



- 5- Click on "OK". The "All prior" mode is now activated and takes into account the camera calibration.