

Parrot CK3300 with I-mate JAM and TOMTOM Navigator 5



i-mate JAM



**TOMTOM
Navigator 5**

Features

- GPS and Handsfree connection at the same time.
- Voice navigation instructions through PDA headspeakers.
- Automatic switch between GPS and phone applications.
- Voice navigation instructions are not played during a call.
- Automatic GPS connection.

SetUp Procedures

- Setup Procedure.
- TOMTOM Setup Procedure.

Step 1 - Setup Procedure



CK3300's start screen



PDA's today screen



Step 1 - Setup Procedure



Consult the START menu and please choose the SETTINGS option

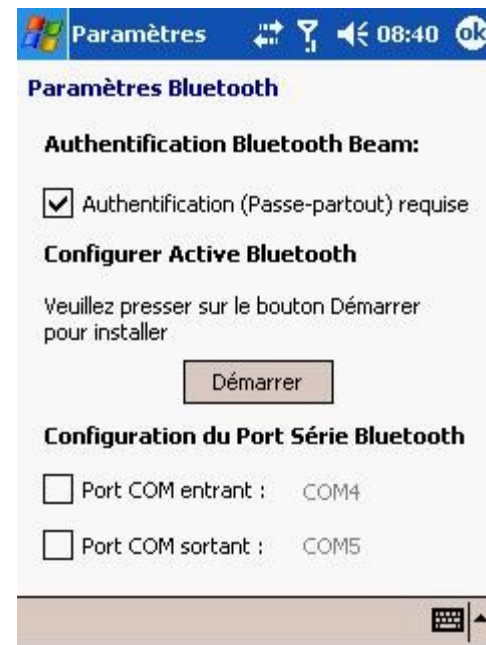


Tap on the SYSTEM tab

Step 1 - Setup Procedure



Select the BLUETOOTH SETTINGS icon

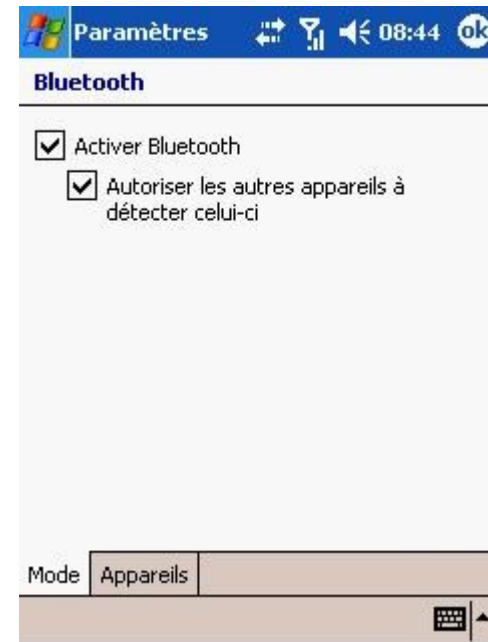


Select the OUTBOUND port

Step 1 - Setup Procedure



Select a GPS device, please tap on OK



Bluetooth is activate, please tap on the DEVICES tab

Step 1 - Setup Procedure



You have to select a new Bluetooth device: please tap on NEW



The phone is searching for Bluetooth devices in range

Step 1 - Setup Procedure



Please select Parrot CK3300



Tap on NEXT

Step 1 - Setup Procedure



Paramètres 08:53

Entrer le passe

Entrez un passe pour établir une connexion sécurisée avec CK3300-L.

Passe:

Annuler Précéd. Suivant

123	a	z	e	r	t	y	u	i	o	p	←
→	q	s	d	f	g	h	j	k	l	m	
↑	w	x	c	v	b	n	,	;	:	←	
Ctl	â	ë	é	è		ç	à	ù	!		

Please enter 1234 as PASSKEY and select NEXT



Paramètres 08:55

Nom d'affichage

Entrez un nom d'affichage pour l'appareil.

Nom:

Annuler Terminer

123	[]	{	}	7	8	9	#	%	=	←
^	,	.	<	>	4	5	6	+	-	*	/
±	°	:	\		1	2	3	↓	↑	←	→
\$	¢	€	£	¥	(0)	→	Espace	←	

The pairing is completed: tap on DONE

Step 1 - Setup Procedure



Please accept to define the CK3300 as a HandsFree device



HandsFree connexion is done

Step 1 - Setup Procedure



Navigate to the Parrot CK3300
GPS menu



Then consult the ACTIVATE /
DEACTIVATE menu of the
CK3300

Step 1 - Setup Procedure



Activate the GPS function of the kit



CK3300's GPS function is now activated



Step 2 – TOMTOM Setup Procedure



Please tap on the TOMTOM shortcut



TOMTOM's start screen



Step 2 - TOMTOM Setup Procedure



Select your language



Confirm your choice



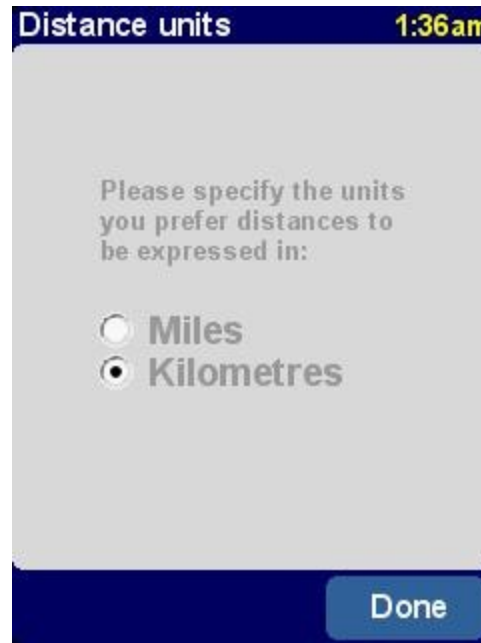
Please set your preferences



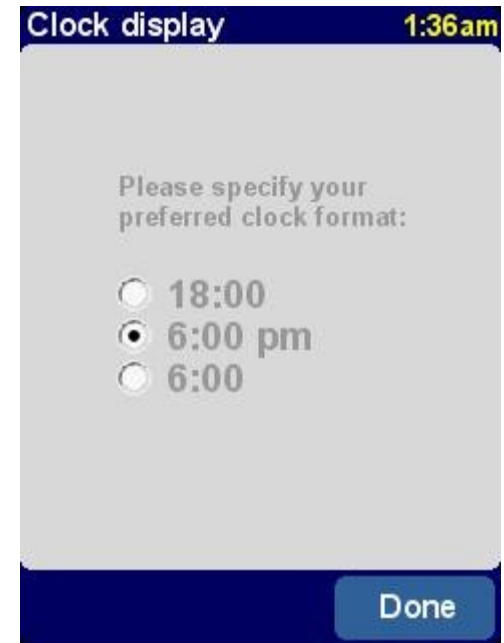
Step 2 - TOMTOM Setup Procedure



Select whether you are Lefty or rigthy



Select the units for your navigation

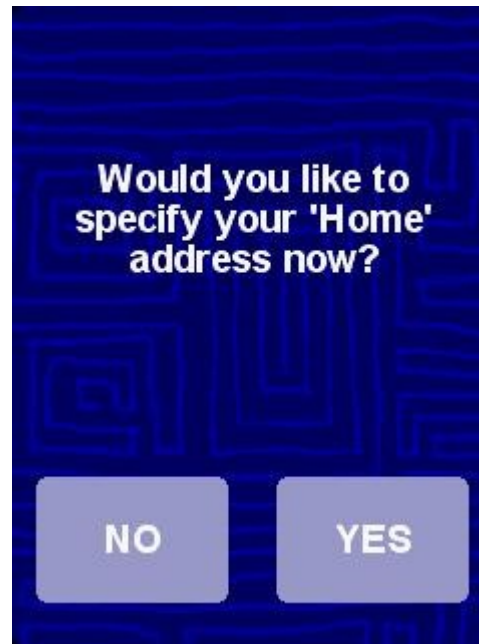


Select the clock format for your navigation

Step 2 - TOMTOM Setup Procedure



Select the voice model for your navigation



Select your Home address



Set your city

Step 2 - TOMTOM Setup Procedure



Set your street

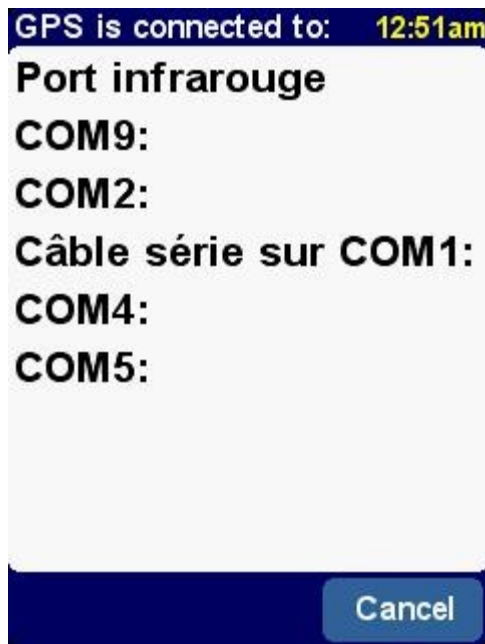


Specify your GPS device

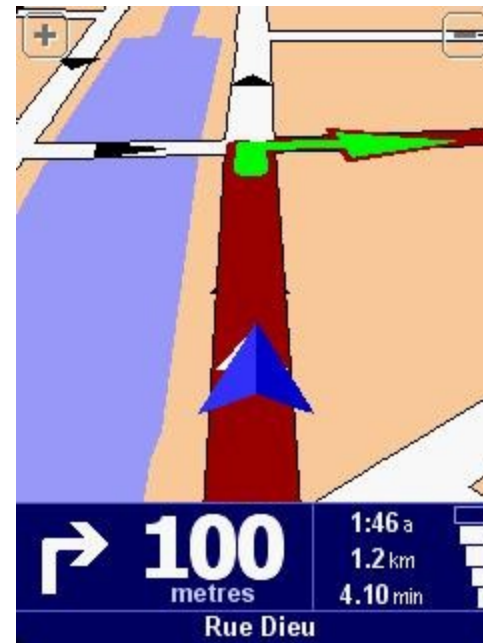


Tap on CONTINUE

Step 2 - TOMTOM Setup Procedure



Select the Bluetooth
Serial Port COM5



Your GPS system is set up