



Parrot

Parrot CK3300 with Qtek 8020 and TOMTOM Mobile 5

Tested with ROM operator 1.1.31.21



Qtek 8020



**TomTom
Mobile 5**

Features

- GPS and Handsfree connection at the same time.
- Voice navigation instructions through PDA headspeakers.
- Automatic switch between GPS and phone applications.
- Voice navigation instructions are not played during a call
- Automatic GPS connection

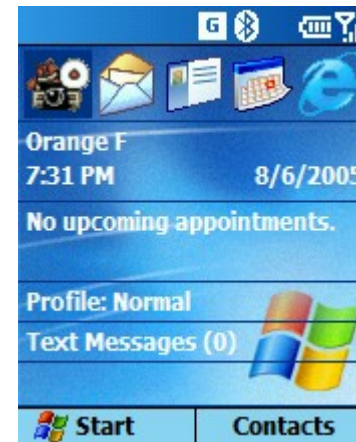
SetUp Procedures

- Setup Procedure.
- TOMTOM Setup Procedure.

Step 1 - Setup Procedure

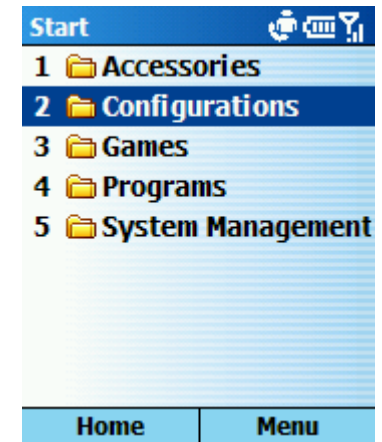
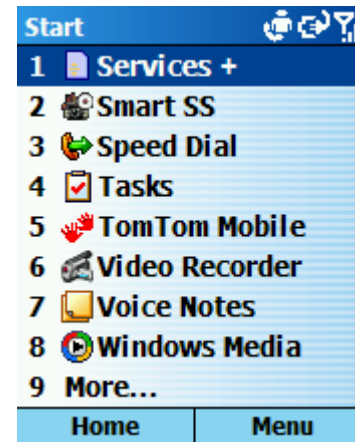
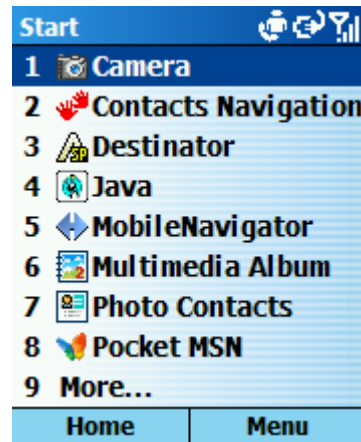
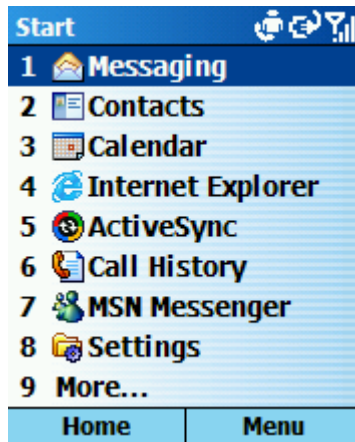


CK3300's start screen



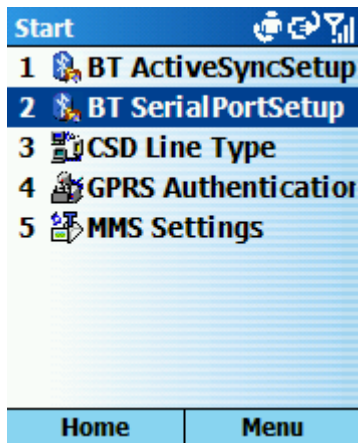
From the Smartphone's Today screen, please consult the START menu

Step 1 - Setup Procedure

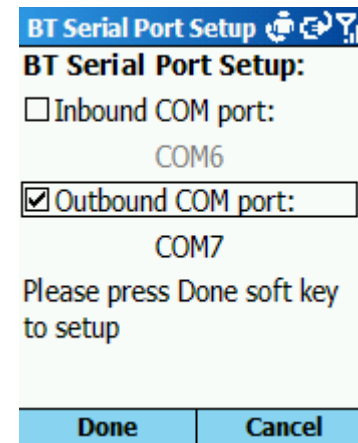


Press START menu, and select the CONFIGURATIONS file (press MORE to reach configuration).

Step 1 - Setup Procedure

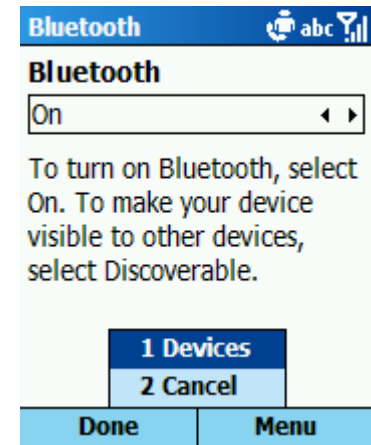
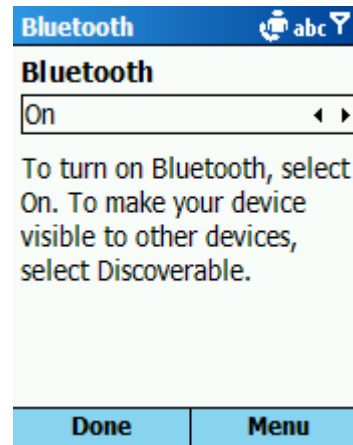
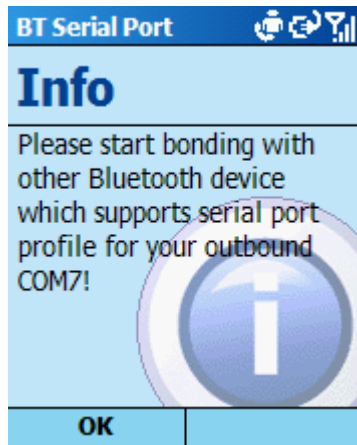


Select the BT SERIALPORTSETUP icon



Check the OUTBOUND COM PORT 7 and please press on DONE

Step 1 - Setup Procedure



You will select a GPS device,
please press on OK

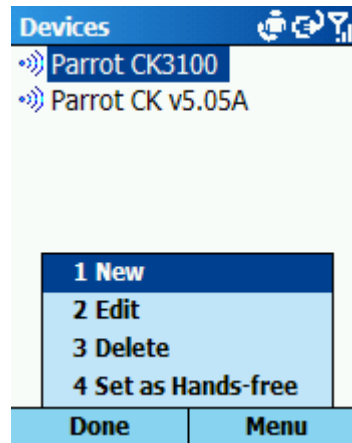
Please make sure
BLUETOOTH is ON

Press on MENU and select
the DEVICES command

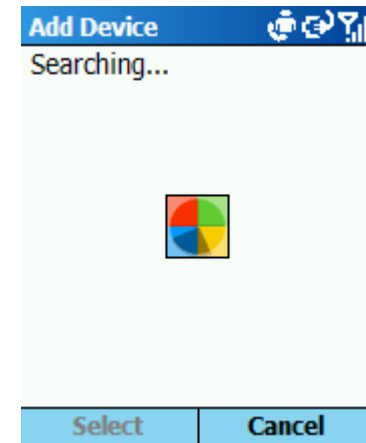
Step 1 - Setup Procedure



You will select a new Bluetooth device



Please press on MENU and then select NEW

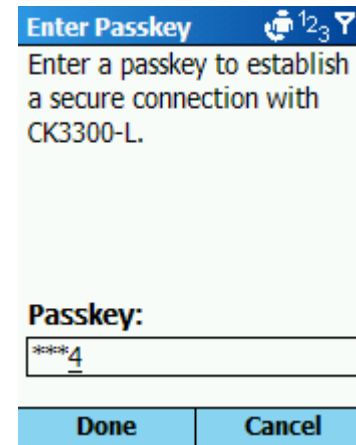


The phone is searching for Bluetooth devices in range

Step 1 - Setup Procedure

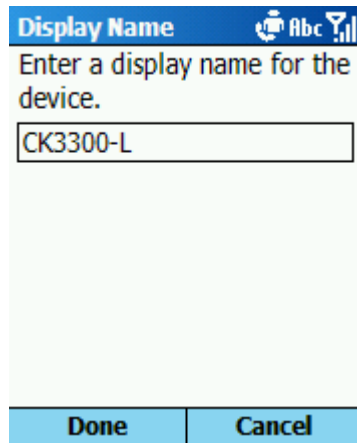


Please select Parrot CK3300

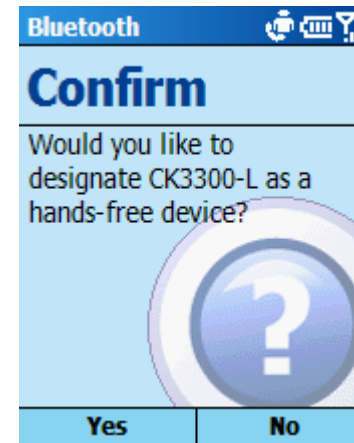


Please enter 1234 as PASSKEY
and select DONE

Step 1 - Setup Procedure



The pairing is completed:
press on DONE



Please accept to define the
CK3300 as a HandsFree
device

Step 1 - Setup Procedure



HandsFree connexion is done

Step 1 - Setup Procedure



Navigate to the Parrot CK3300
GPS menu



Then consult the ACTIVATE /
DEACTIVATE menu of the
CK3300

Step 1 - Setup Procedure



Activate the GPS function of the kit



CK3300's GPS function is now activated

Step 2 – TOMTOM Setup Procedure



Please start the TOMTOM
MOBILE software



Select your language

Step 2 - TOMTOM Setup Procedure

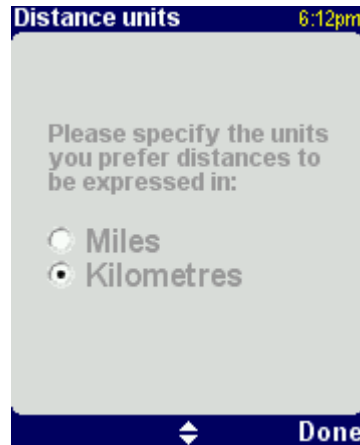


Confirm your choice

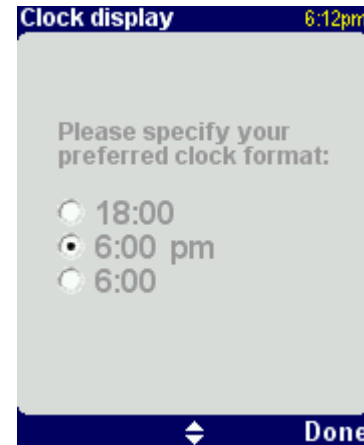


Please set your preferences

Step 2 - TOMTOM Setup Procedure



Select the units for your navigation



Select the clock format for your navigation

Step 2 - TOMTOM Setup Procedure



Select the voice model for your navigation



Select your Home address



Set your city

Step 2 - TOMTOM Setup Procedure



Set your street



Specify your GPS device



Press on CONTINUE

Step 2 - TOMTOM Setup Procedure



Your GPS system is set up and ready to be used