

Parrot CK3300 with Nokia 9500 and TOMTOM Mobile 5



Parrot



***TOMTOM
Mobile 5***



Nokia 9500

Features

- GPS and Handsfree connections at the same time
- Voice navigation instructions through the car speakers
- Automatic switch between GPS and phone applications
- Voice navigation instructions are not played during a call
- GPS automatic connection

SetUp Procedures

- HandsFree Setup Procedure.
- HandsFree disconnection.
- GPS Setup Procedure.
- HandsFree & GPS connections at the same time

Step 1 - HandsFree Setup Procedure

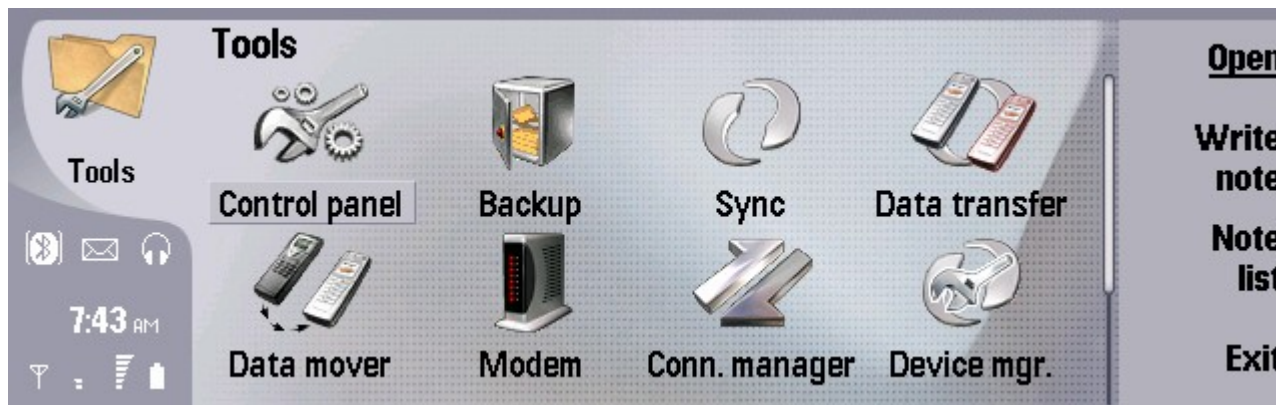


CK3300's start screen

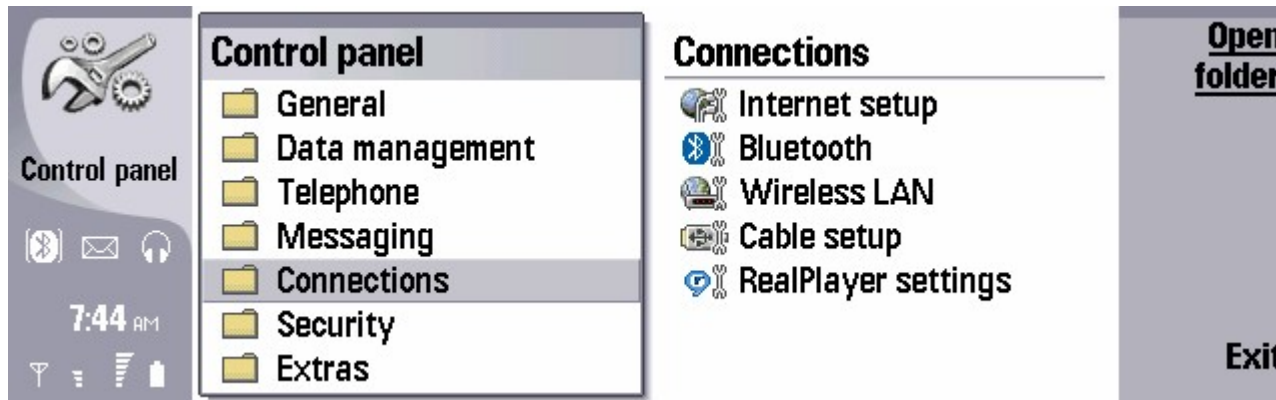


From the phone display, please select the TOOLS icon

Step 1 - HandsFree Setup Procedure



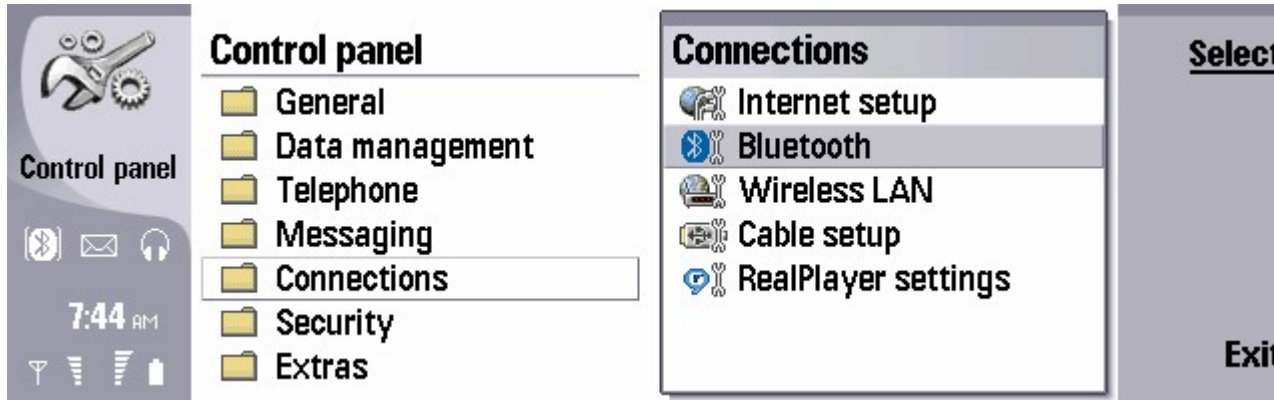
Select the CONTROL PANEL icon



- ### Connections
- Internet setup
 - Bluetooth
 - Wireless LAN
 - Cable setup
 - RealPlayer settings

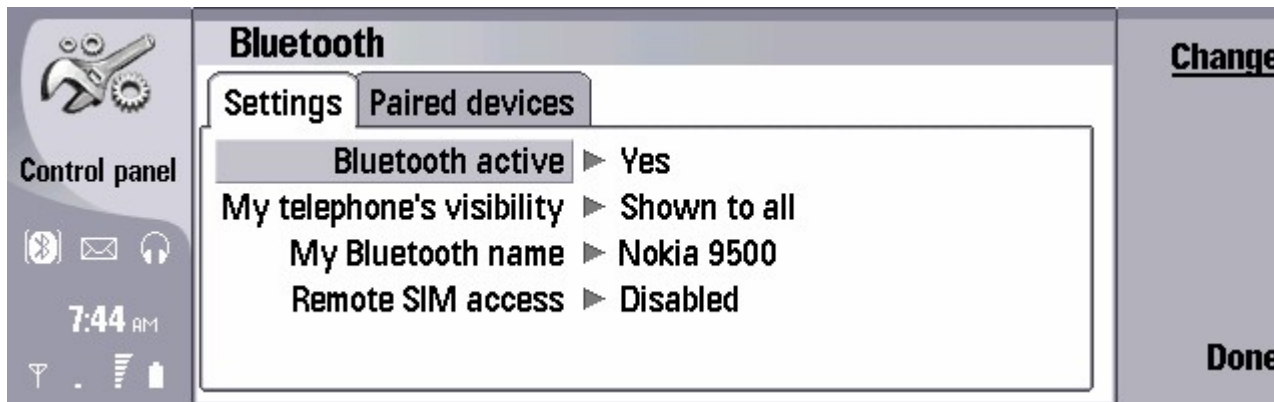
Please select the CONNECTIONS command

Step 1 - HandsFree Setup Procedure



The screenshot shows the Nokia 9500 Control Panel. On the left is a vertical sidebar with a 'Control panel' icon, a Bluetooth icon, an email icon, a headset icon, the time '7:44 AM', and signal/battery indicators. The main area is titled 'Control panel' and contains a list of folders: General, Data management, Telephone, Messaging, Connections (highlighted), Security, and Extras. To the right of this list is a 'Connections' window with a title bar and a list of options: Internet setup, Bluetooth (highlighted), Wireless LAN, Cable setup, and RealPlayer settings. On the far right is a vertical sidebar with 'Select' at the top and 'Exit' at the bottom.

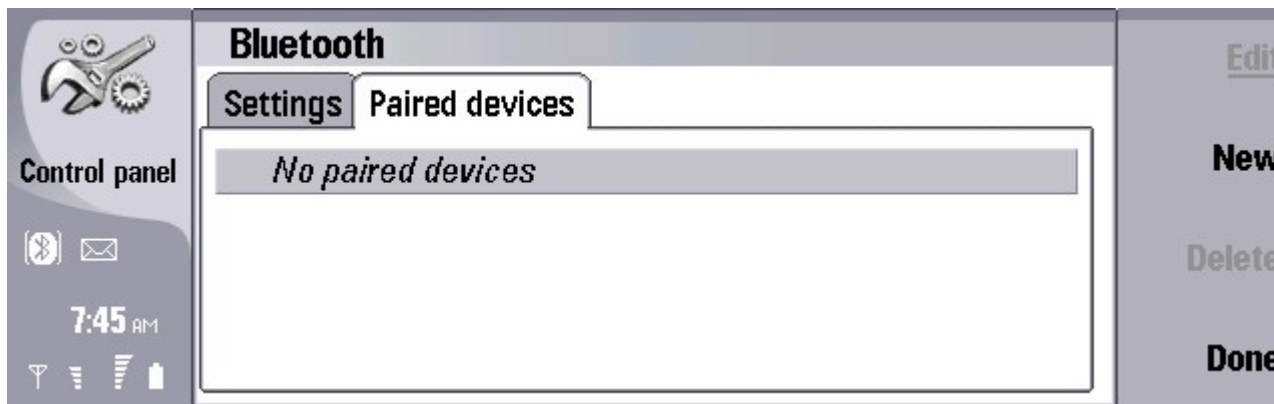
Select the
BLUETOOTH
command



The screenshot shows the Bluetooth settings screen. The sidebar is identical to the previous screenshot. The main area is titled 'Bluetooth' and has two tabs: 'Settings' (selected) and 'Paired devices'. Below the tabs is a list of settings: 'Bluetooth active' (Yes), 'My telephone's visibility' (Shown to all), 'My Bluetooth name' (Nokia 9500), and 'Remote SIM access' (Disabled). On the far right is a vertical sidebar with 'Change' at the top and 'Done' at the bottom.

Please make sure
that BLUETOOTH
is activated

Step 1 - HandsFree Setup Procedure

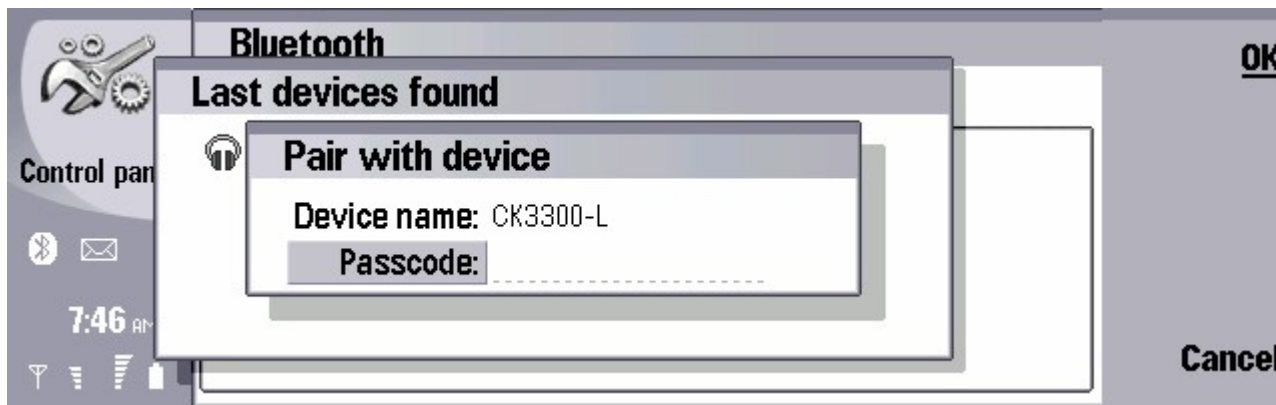


Please tap on the PAIRED DEVICES tab, and select the NEW menu

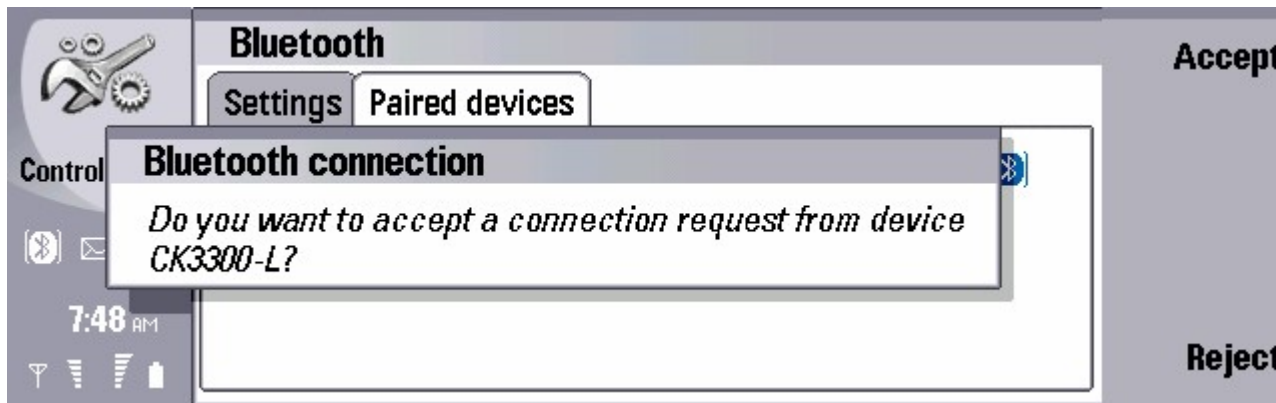


Select your CK3300

Step 1 - HandsFree Setup Procedure



Enter 1234 as
PASSKEY



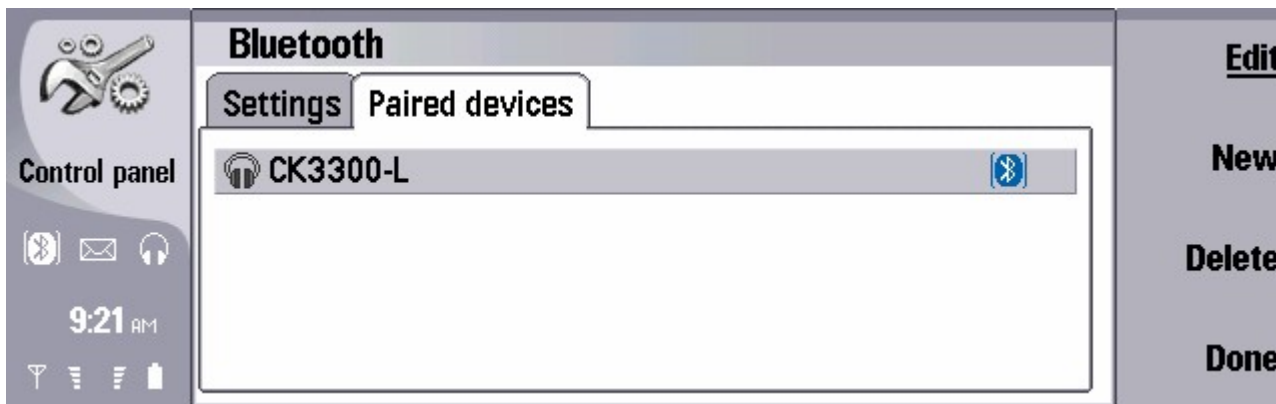
Please accept the
connection with
the CK3300

Step 1 - HandsFree Setup Procedure

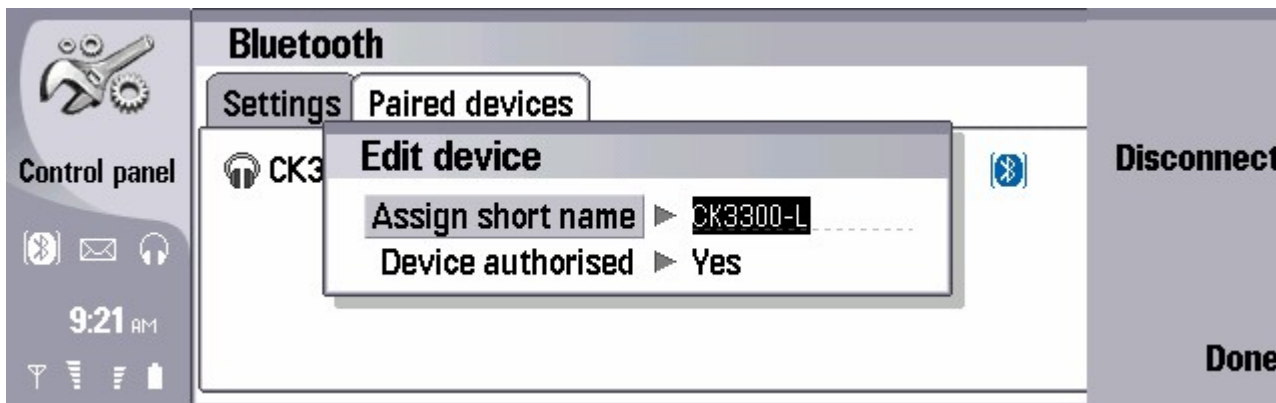


The two devices are
now connected

Step 2 – HandsFree disconnection



Please select your CK3300 and select the EDIT menu



Please select the DISCONNECT command

Step 2 – HandsFree disconnection



The phone and the
CK3300 are disconnected

Step 3 – GPS Setup procedure

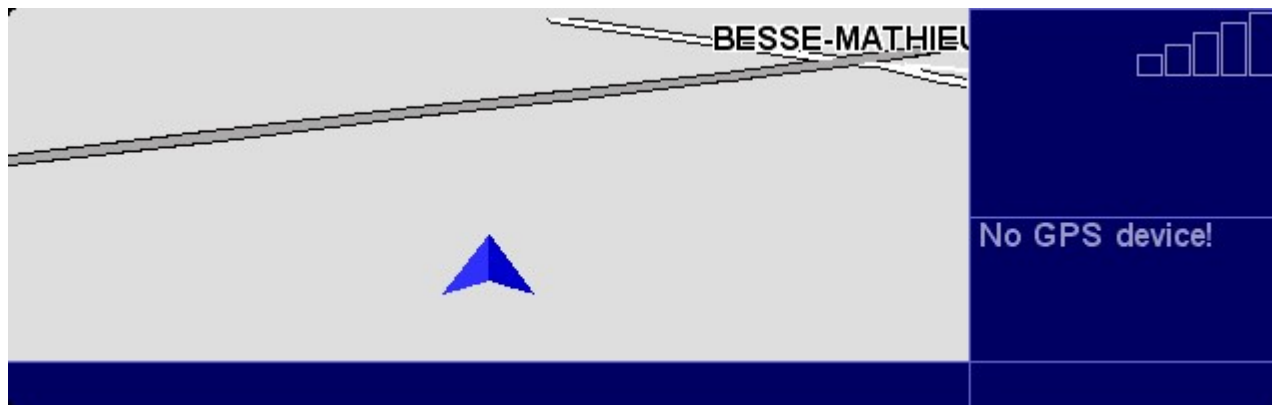


Please start TOMTOM

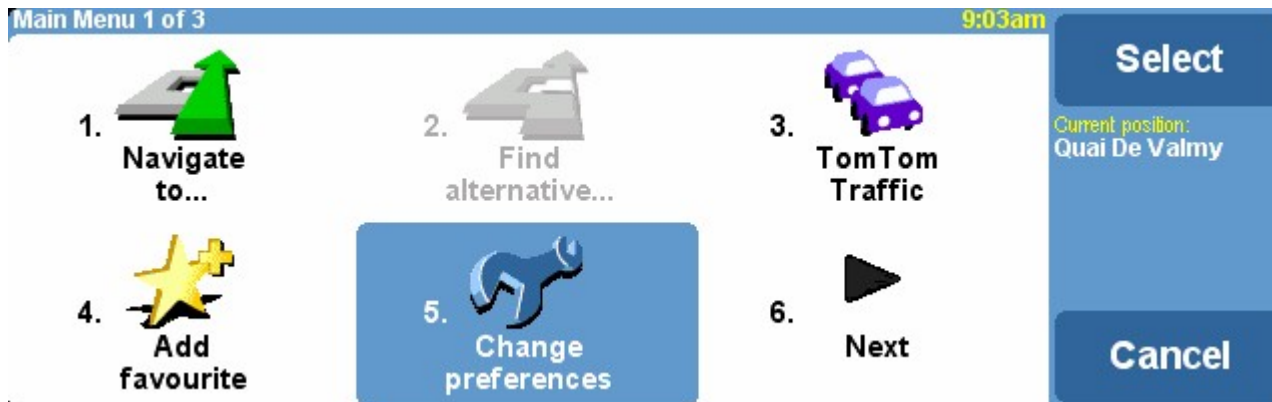


TOMTOM's start screen

Step 3 – GPS Setup procedure

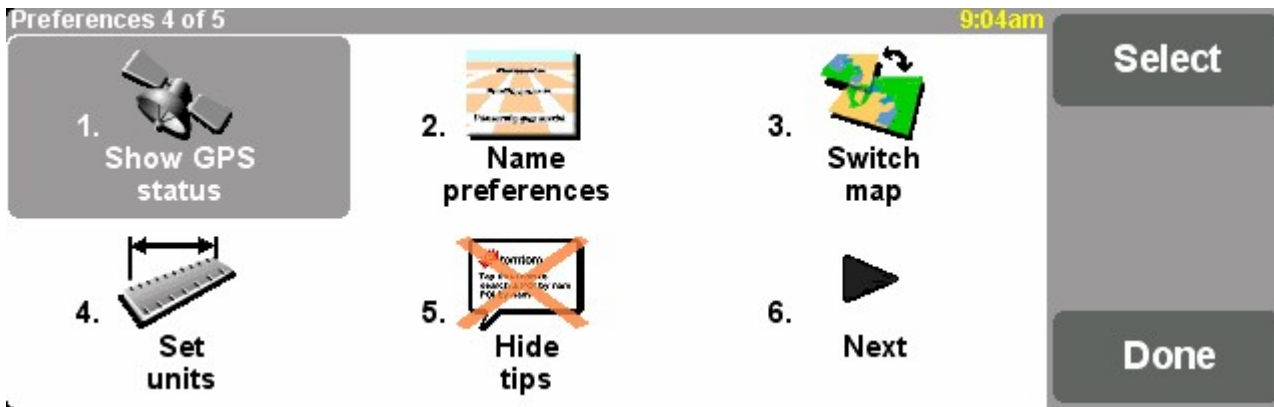


Please press the joystick button of your Nokia 9500

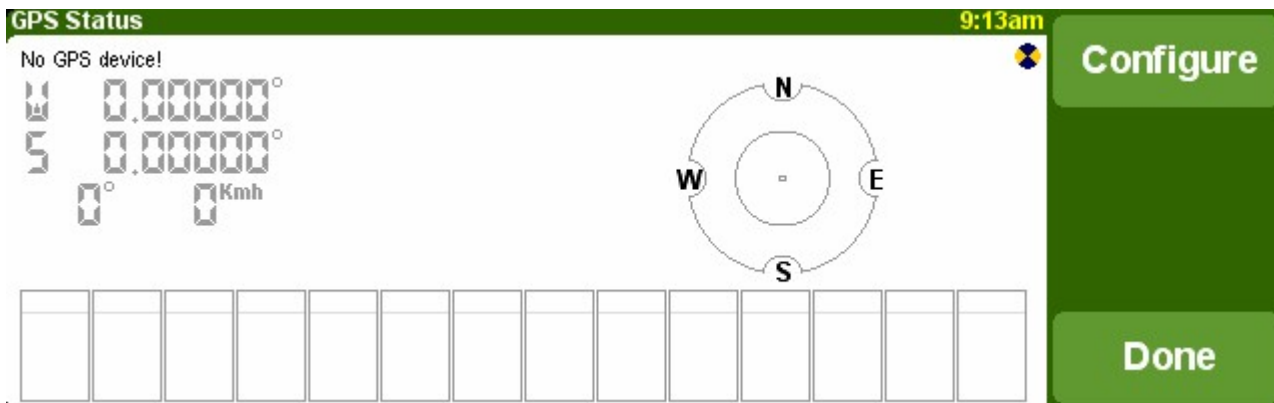


Please select the CHANGE PREFERENCES icon

Step 3 – GPS Setup procedure



Please select the SHOW GPS STATUS icon



Please select the CONFIGURE menu

Step 3 – GPS Setup procedure



Select
OTHER BLUETOOTH
GPS option to define
your GPS receiver



Please select your
CK3300



Step 3 – GPS Setup procedure

Please pair your Bluetooth GPS and your PDA/Smartphone. For details, consult the documentation for your GPS receiver and your PDA/Smartphone.

Continue

Please select the CONTINUE option

GPS Status 10:02am

Other Bluetooth GPS 18:11:51 UTC

E 2.35635°
N 48.83264°
204° 18 Kmh

03	06	10	13	15	16	18	21	25	30				
----	----	----	----	----	----	----	----	----	----	--	--	--	--

Configure

Done

TOMTOM software is receiving GPS signal from the CK3300

Step 4 – HandsFree & GPS connections at the same time



HandsFree & GPS connections are active at the same time



Step 4 - HandsFree & GPS connections at the same time



Navigation with
TOMTOM