

Parrot CK3300 with Nokia 9300 and Wayfinder



Parrot



Features

- GPS and Handsfree connection at the same time.
- Voice navigation instructions through CK3300 headspeakers.
- Automatic switch between GPS and phone applications for in-going calls.
- Voice navigation instructions are not played during a call
- Automatic GPS connection

SetUp Procedures

- HandsFree Setup Procedure.
- GPS Setup Procedure.
- HandsFree & GPS connection at the same time

Step 1 - HandsFree Setup Procedure

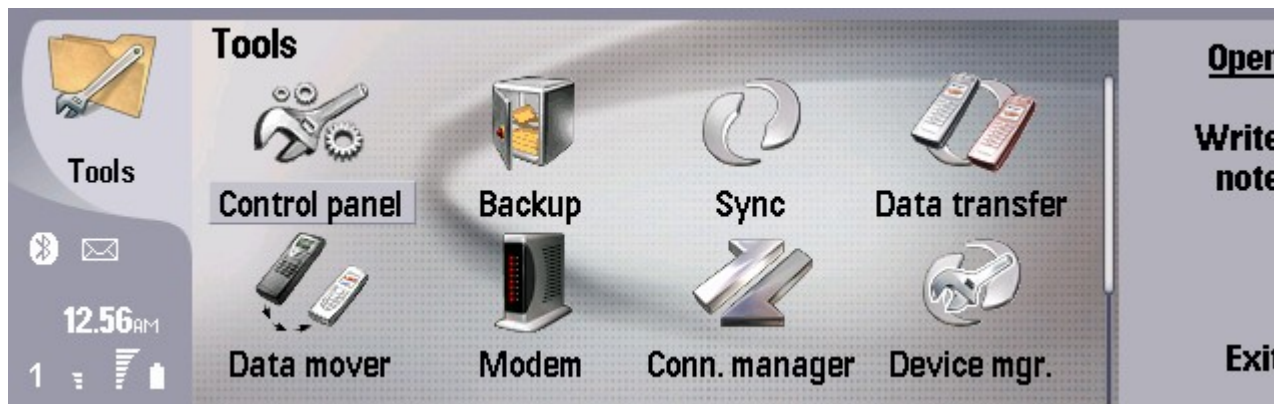


CK3300's idle screen

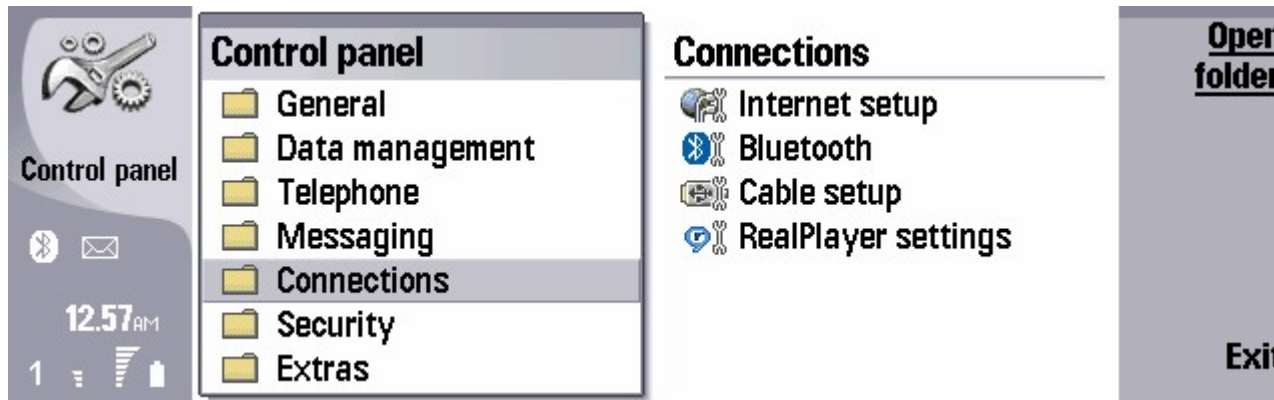


From the phone's display, select the TOOLS icon

Step 1 - HandsFree Setup Procedure

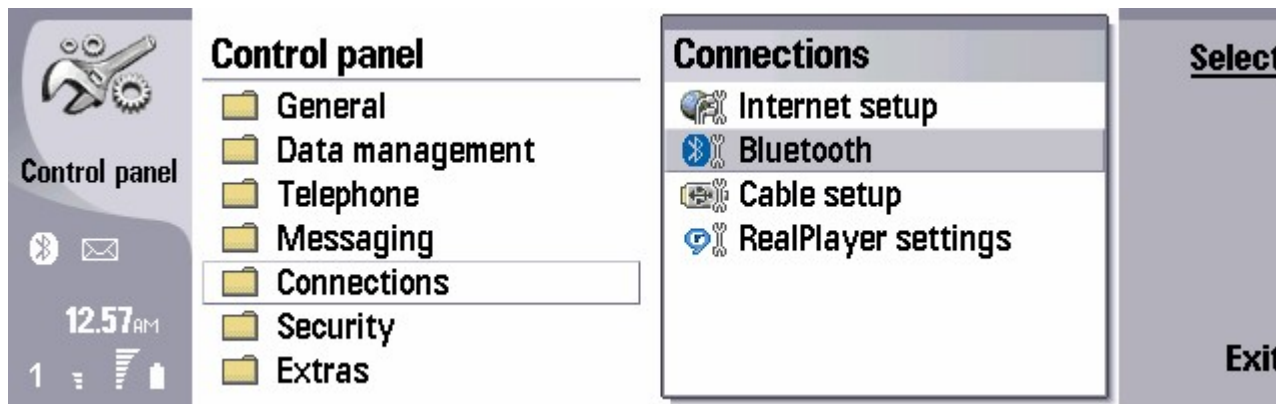


Select the CONTROL PANEL icon



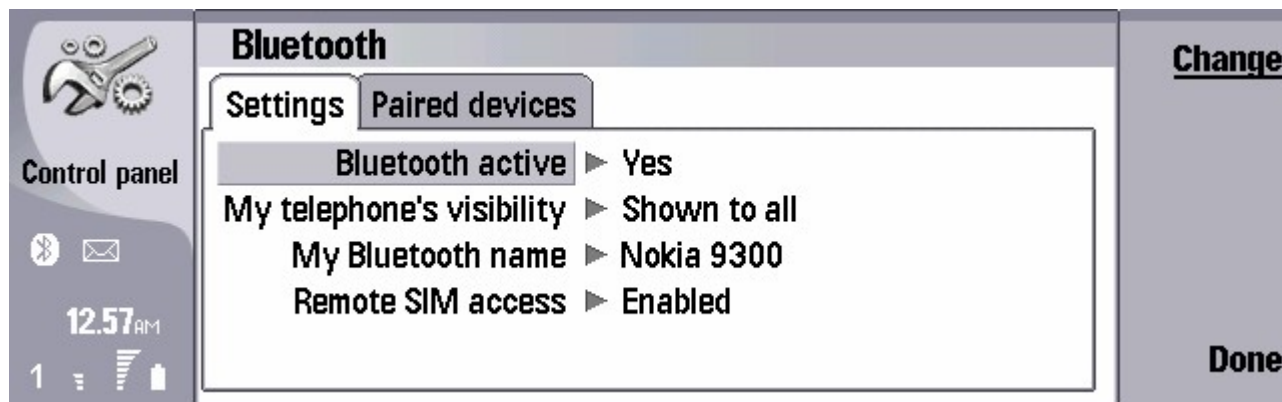
Please select the CONNECTIONS command

Step 1 - HandsFree Setup Procedure



The screenshot shows the Nokia 9300 Control panel. The 'Control panel' icon is at the top left. Below it, the time is 12:57 AM. The 'Connections' folder is selected and highlighted. To the right, the 'Connections' menu is open, showing options: Internet setup, Bluetooth, Cable setup, and RealPlayer settings. The 'Bluetooth' option is highlighted. On the far right, there are 'Select' and 'Exit' buttons.

Select the
BLUETOOTH
command

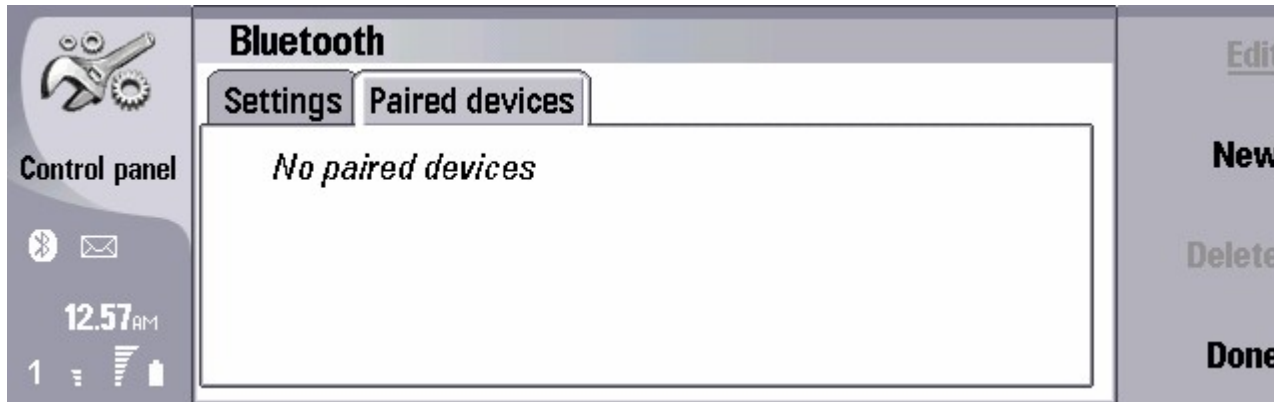


The screenshot shows the Bluetooth settings screen. The 'Bluetooth' icon is at the top left. Below it, the time is 12:57 AM. The 'Settings' tab is selected. The settings are: Bluetooth active (Yes), My telephone's visibility (Shown to all), My Bluetooth name (Nokia 9300), and Remote SIM access (Enabled). On the far right, there are 'Change' and 'Done' buttons.

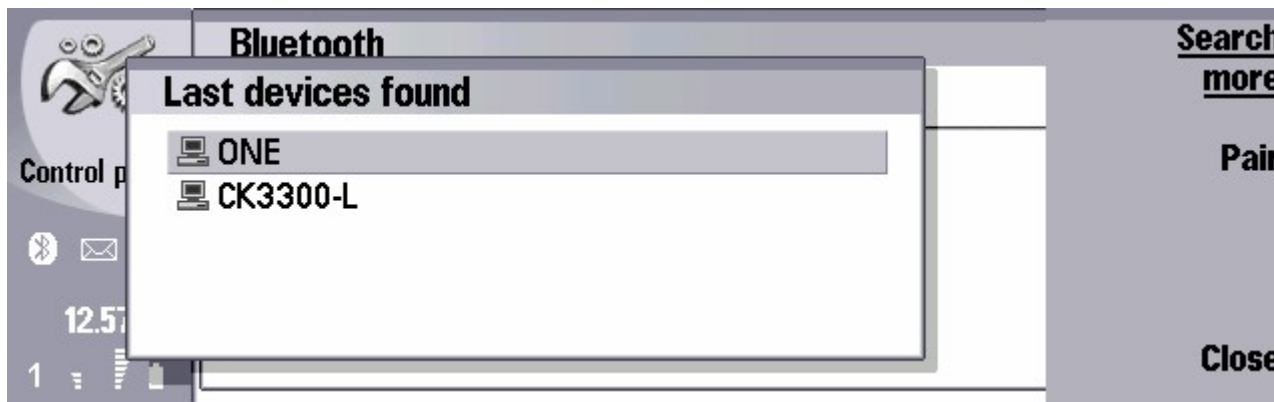
Please make sure
that BLUETOOTH
is activated



Step 1 - HandsFree Setup Procedure



Please tap on the PAIRED DEVICES tab, and select the NEW menu

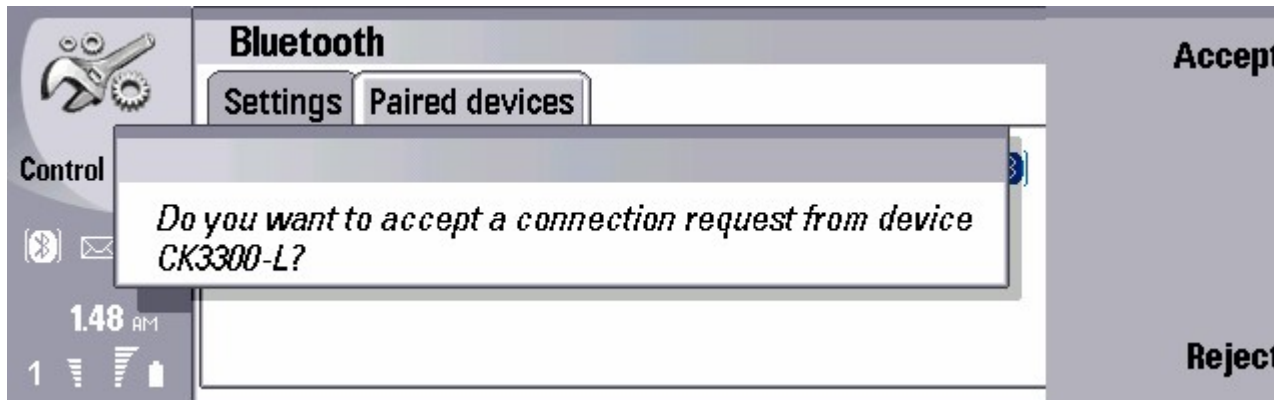


Select Parrot CK3300

Step 1 - HandsFree Setup Procedure



Enter 1234 as
PASKEY



Please accept the
carkit connexion
request from the
phone's display

Step 1 - HandsFree Setup Procedure



The two devices are now connected, and ready for the audio transfer.

Step 2 – GPS Setup procedure

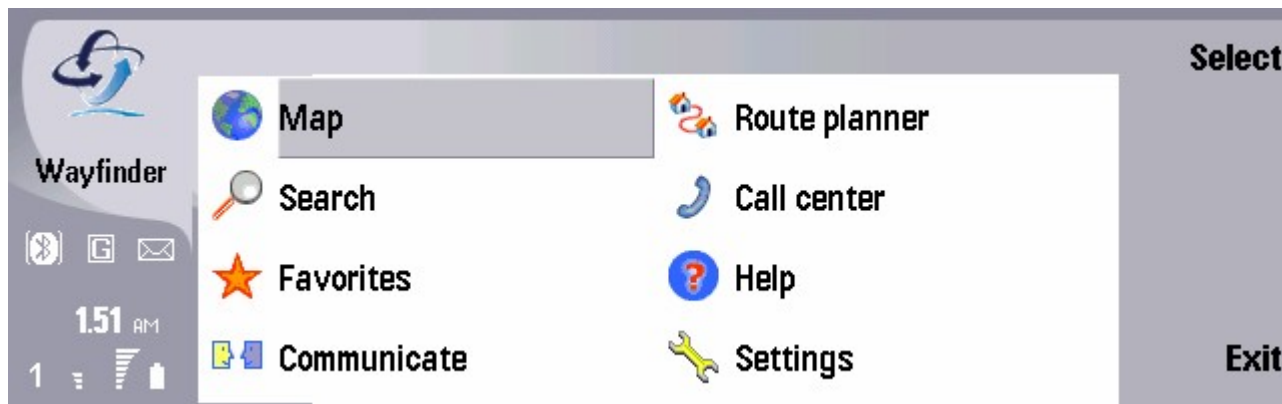


Run WAYFINDER

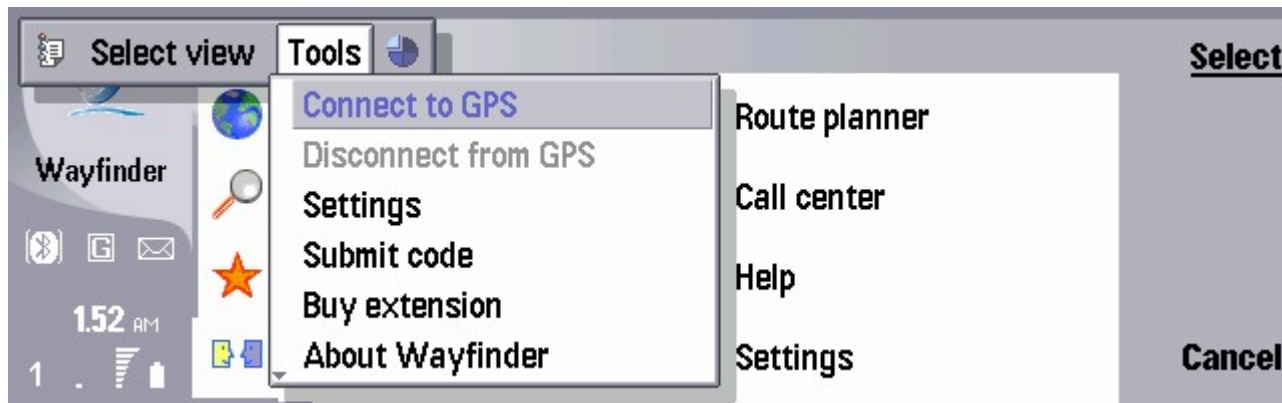


WAYFINDER's start screen

Step 2 – GPS Setup procedure



Press the MENU button of your Nokia 9300



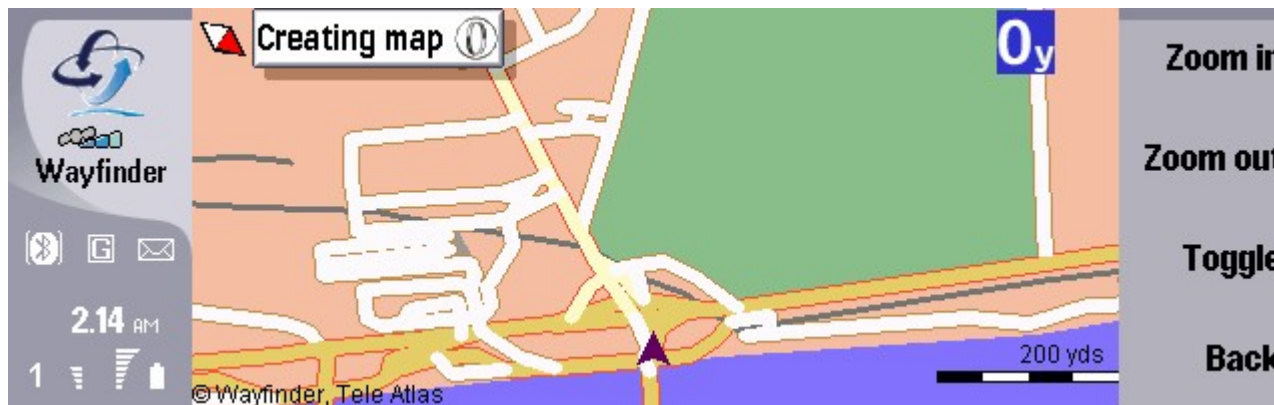
In the TOOLS menu, please select 'CONNECT to GPS'

Step 3 – HandsFree & GPS connexion at the same time



HandsFree & GPS
connection are active at
the same time (a small
GPS icon is displayed)

Step 3 – HandsFree & GPS connexion at the same time



Navigation with
WAYFINDER

Step 3 – HandsFree & GPS connexion at the same time



Navigation with
WAYFINDER