



Parrot 3200LS-COLOR :
How to send a photo to a synchronized contact, or simply add a new wallpaper (for version 2.02 and above) ?

- - -

1. Associate a Photo to a synchronized contact

This part explains how to send a picture to a synchronized contact with the Parrot 3200LS-COLOR.

First of all, you phone must have the capacity to send contacts (without photos) to the carkit, either by automatic synchronization or by Object Push (refer to our website www.parrot.biz, Support, to know this information).

In order to add a photo to a contact (already synchronized, car kit's phonebook available), please follows the steps hereunder:

This procedure has been tested with a Nokia 6230 v03.15 (supports automatic synchronization).

1. Go to Settings:



2. Select Contacts Management:

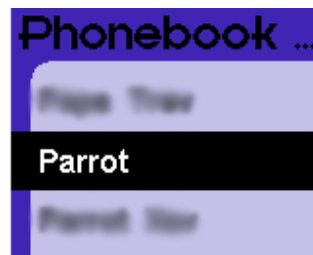
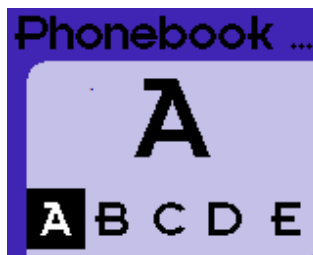




3. Select Phonebook Management:



4. Select the contact in the list (the picture will be associated to this contact):



5. In the option list, select Associate Photo:



6. Pending Photo is displayed, and the two devices disconnect the Bluetooth Link:





7. From the phone, select the picture which will be associated to the selected contact. Once the photo has been transmitted, "File Received" is displayed (briefly), and the option Display the picture is now available:



8. Select Display the Picture in order to check that the photo has been correctly transmitted:



Picture details : 29,5kB, 640x480, JPEG

9. From now, when this contact will call you, the associated photo will be displayed:



10. When switching off the car ignition, do not forget that you have to see "Goodbye". If not, you have a problem with the installation, and you have to inverse the two fuses (orange and red) on the car kit's Power Cable.



2. Add a new wallpaper to the Parrot 3200LS-COLOR:

From the software version 2.02 and above, it is very easy to add wallpaper. You have to follow the steps hereunder:

1. Go to settings:



2. Select Display:



3. In this menu, select Wallpaper:

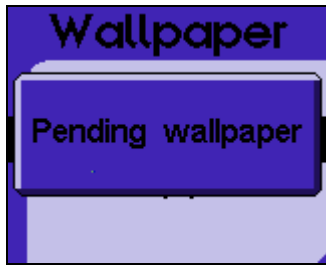


4. In order to add a new wallpaper (customized one), select Add Wallpapers:





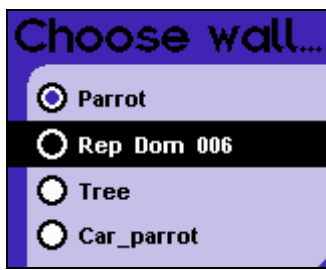
5. The car kit and the phone disconnect the Bluetooth Link, and the car kit is ready to receive a wallpaper (picture). Pending Wallpaper is displayed:



6. From the phone interface, select the picture you want to have for wallpaper, and send it over Bluetooth. Once received, File Received is displayed. Select Choose Wallpaper in the menu:



7. In the following list, select the added picture (here is Rep Dom 006):



8. Once selected, the wallpaper is loaded (it can take some times, depending on the picture size/resolution). Go to the idle menu by holding the red button. The wallpaper will be now displayed:



Picture details: 994.8kB, 1600x1200, JPEG.