



Parrot SOUND SYSTEM:

**Stream your songs,
using the Parrot DONGLE**





The purpose of this document is to help the user about the streaming of its favourites songs: how to connect, how to stream, how to route the sound of the player to the speakers...

Configuration	2
Connect your Parrot DONGLE	2
Pair the Dongle and the Parrot SOUND SYSTEM	2
Transfer the sound from the PC to the Speakers	5
Launch the Player	6

Configuration

- [Windows XP SP2](#)
- [Parrot DONGLE](#)

Connect your Parrot DONGLE

First of all, you have to install the Parrot DONGLE (or another Bluetooth USB Dongle 2.0 running the A2DP profile).

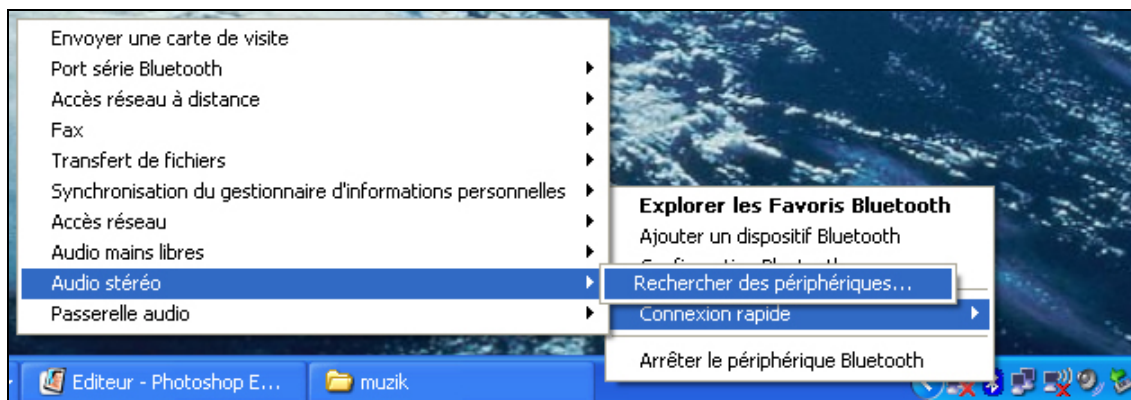
Please refer to the **Parrot DONGLE User Installation Guide**, include into the packaging of the Dongle.

Pair the Dongle and the Parrot SOUND SYSTEM

If you are not connected to a Bluetooth device, the Bluetooth icon in the task bar is red.

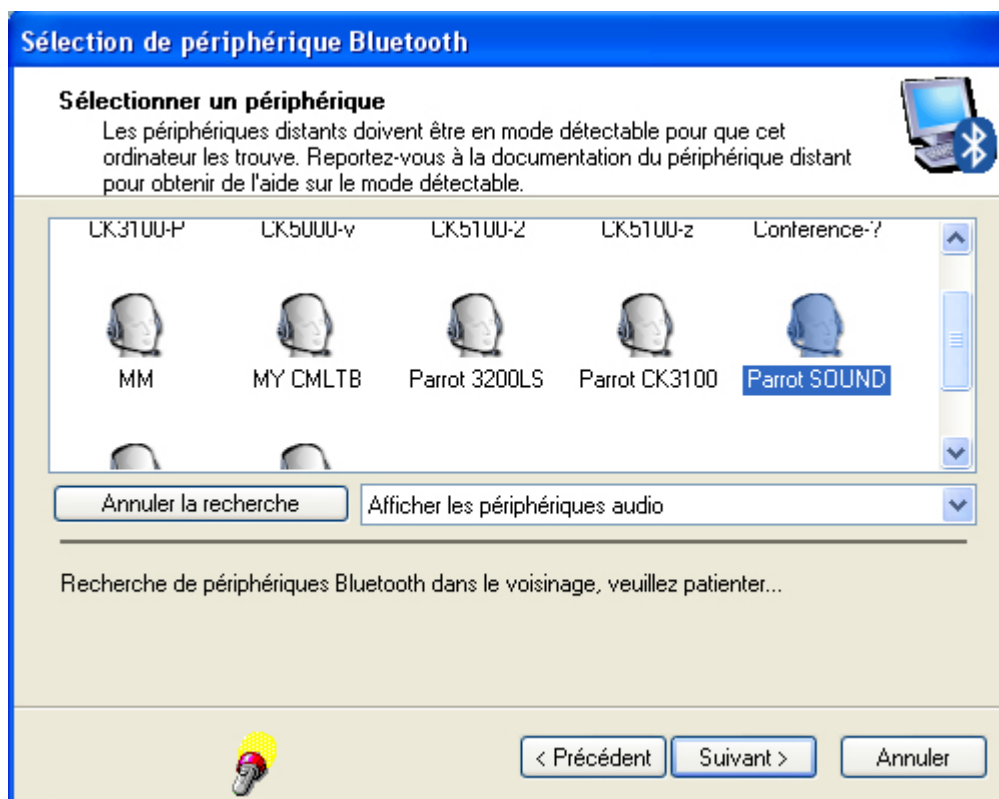
In order to stream the music stored on your PC, you have to connect the Parrot DONGLE and the Parrot SOUND SYSTEM.

From the small Bluetooth icon, perform a right click: a sub-menu will appear. Select “**Quick Connection**”, then “**Audio High Quality**”, and “**Search**”.

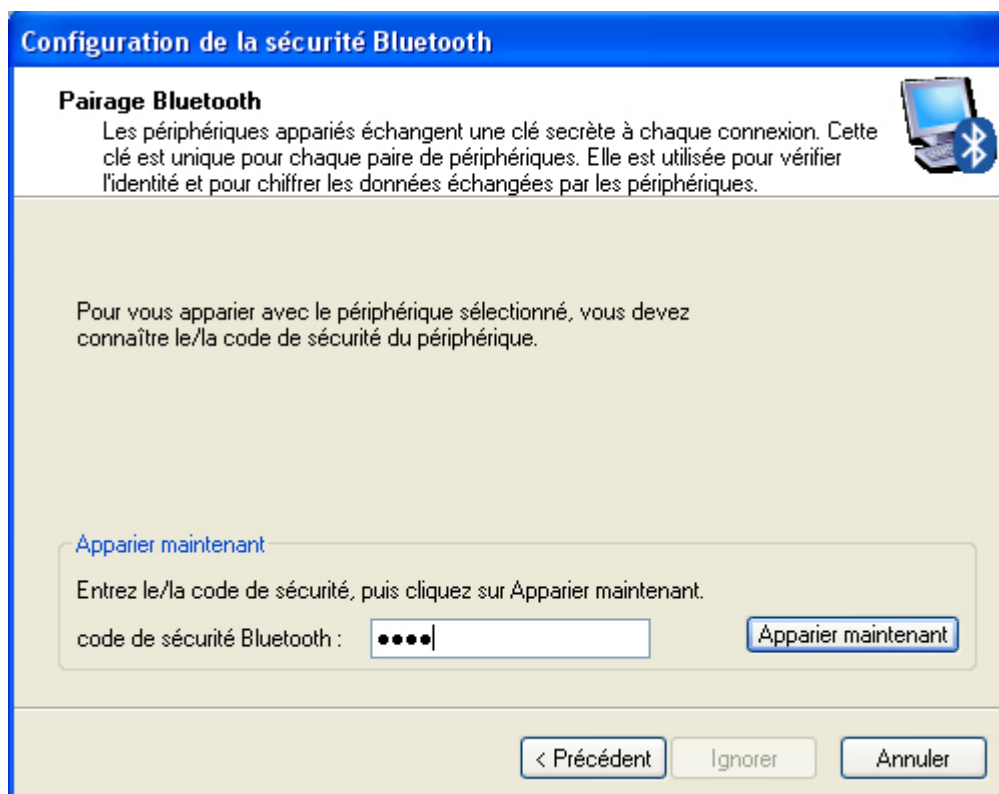




Then DONGLE will search for Bluetooth devices in the range... Select you Parrot SOUND SYSTEM in the list, and click **"Next"**.

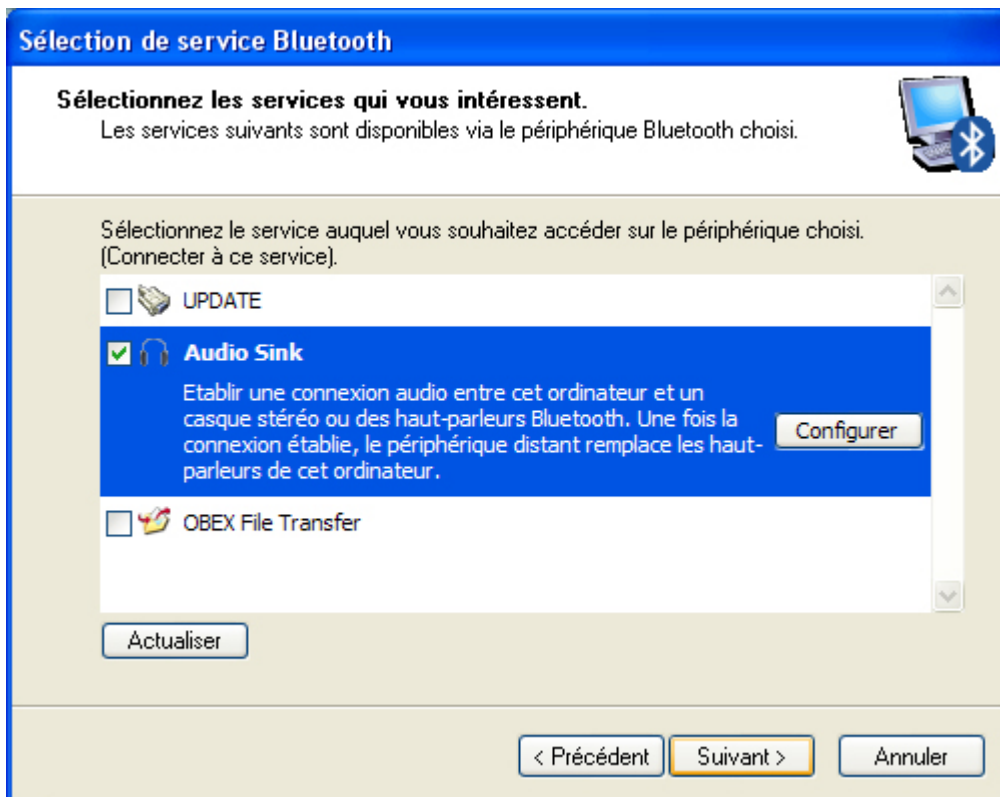


Once selected, the program asks you to enter a 4 digit code. Enter **"0000"** and click on **"Pair Now"**. Both devices are now paired.

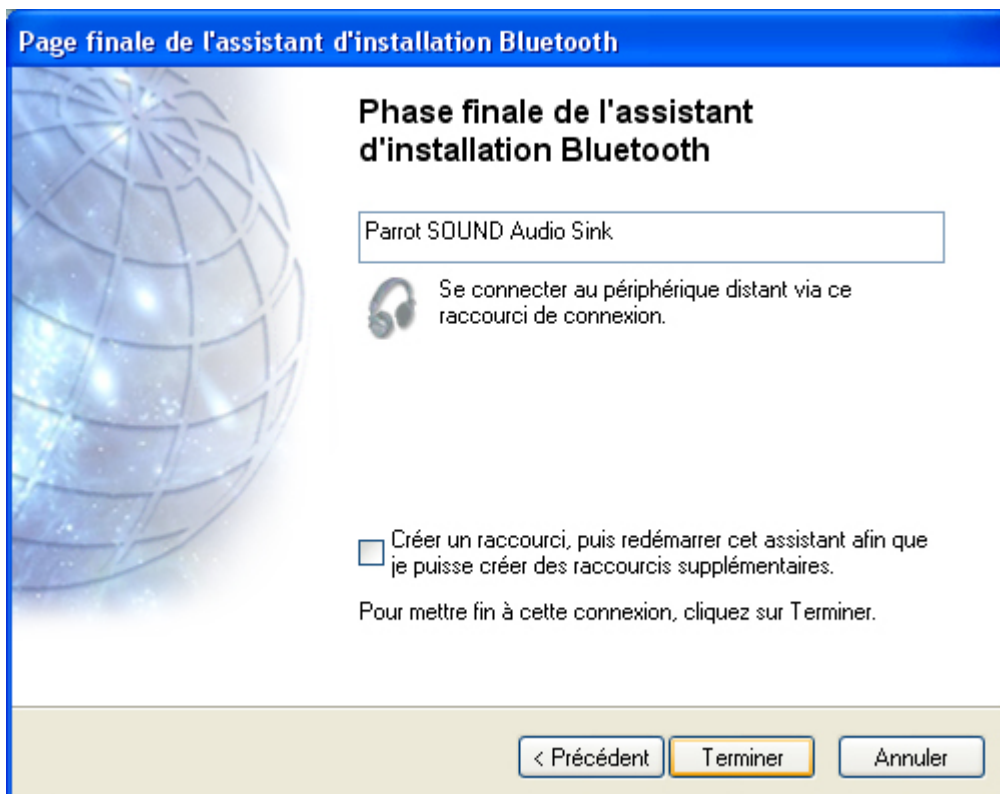




The next step is to connect the A2DP profile, which allows devices to stream music file with a high quality. Tick “**Audio Sink**” in the list, and click on “**Next**”. The other profiles don’t need to be connected (“Update” and “OBEX”).

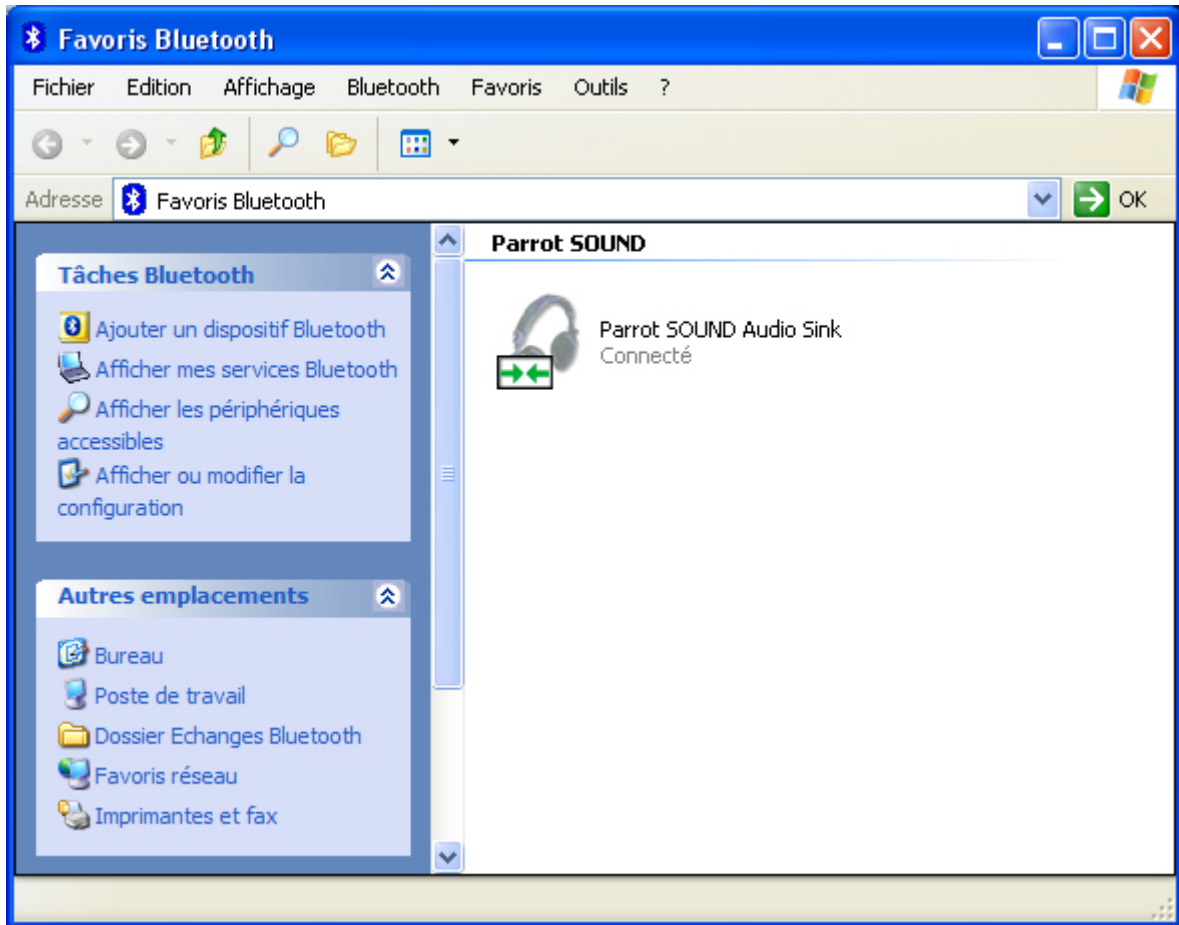


Click on “**Finish**” to terminate the connection between the devices.





Both devices are connected via Audio Sink (see Bluetooth Favourites).

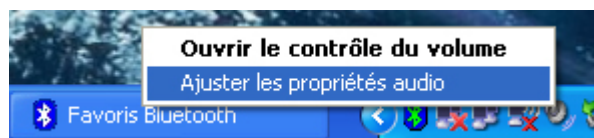


The next step is to route the audio from the PC to the speakers.

Transfer the sound from the PC to the Speakers

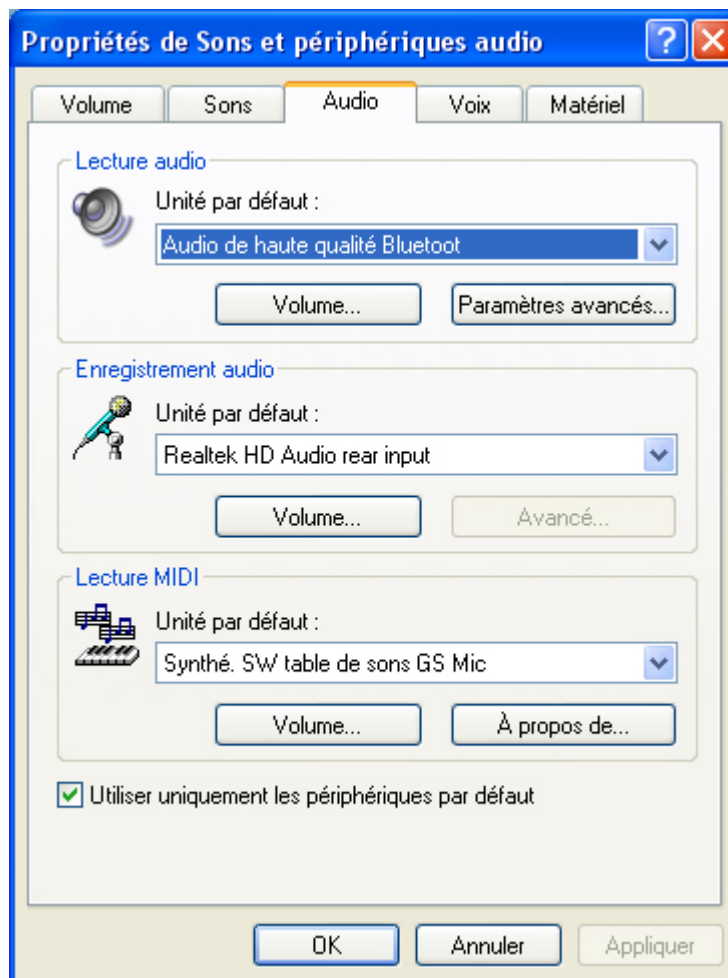
Once connected (the small BT icon turns green), you have to route the audio of the PC to the speakers. In order to do so, follow the steps...

Perform a right-click on the “Volume/Speaker” icon in the task bar, and click on “Audio Properties”.





The following window will open. Then, select the “**Audio**” thumbnail. In “**Audio Player**”, select “**Bluetooth with High Audio Quality**” in the list.



Launch the Player

From now, the sound played by all players will be transferred to the two speakers, via Bluetooth. If the music is coded into stereo, the sound will be transferred into stereo as well to the speakers.

Windows Media Player

Start **Windows Media Player** and select application menu in the top right side, then select Tools > Options, select Devices tab, select Speakers and click on Properties button. Select "**DirectSound: Bluetooth high quality audio**", then "OK" and "OK" (if you did not already route the sound to the Parrot SOUND SYSTEM).