



Update process of Parrot Viewer by Bluetooth





Presentation :	3
Prerequisite.....	4
Parrot Flash Update Wizard	4
New installation.....	4
PFUW Software already installed but needing to be updated.....	5
Parrot Dongle	6
Updating your Parrot Viewer.	7
Preliminary Settings	7
Bluetooth Serial Connection with Parrot Dongle.....	7
Flashing with PFUW via Serial Bluetooth Connection	10



Presentation :

This document presents you the normal process of Parrot Viewer Update. This update will evolve with the version released by the development software team to adapt gradually to all technological environments that have their own pace of change (PDAs, smartphones,).

An update is often necessary to :

- render compatible Parrot Products with new telephones present the market, and
- add new functionalities available on your telephone (FTP, telephony functions).

The material you need is constituted by :

- a PC with a Bluetooth stack, either initially integrated or enabled by a Bluetooth key,
- the software Parrot Flash Update Wizard (which will be called '**PFUW**' in this document),
- a Parrot Viewer product.



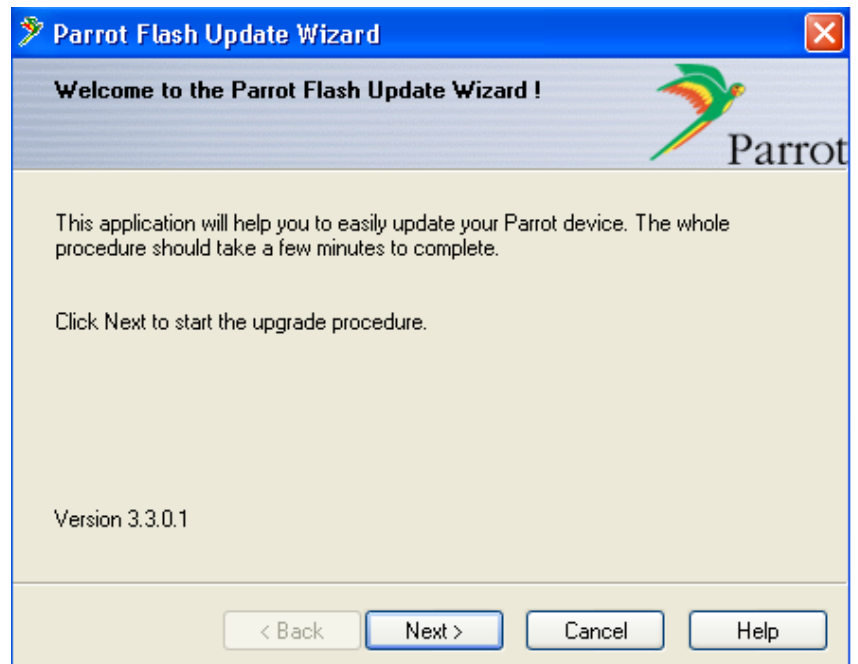
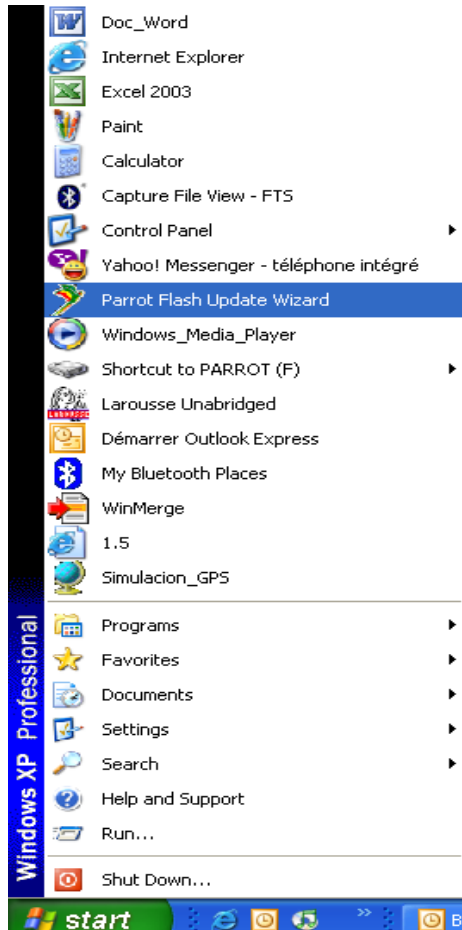
Prerequisite

Parrot Flash Update Wizard

New installation

First of all, we have to secure the fact that you have the latest version of Parrot Flash Update Wizard (PFUW).

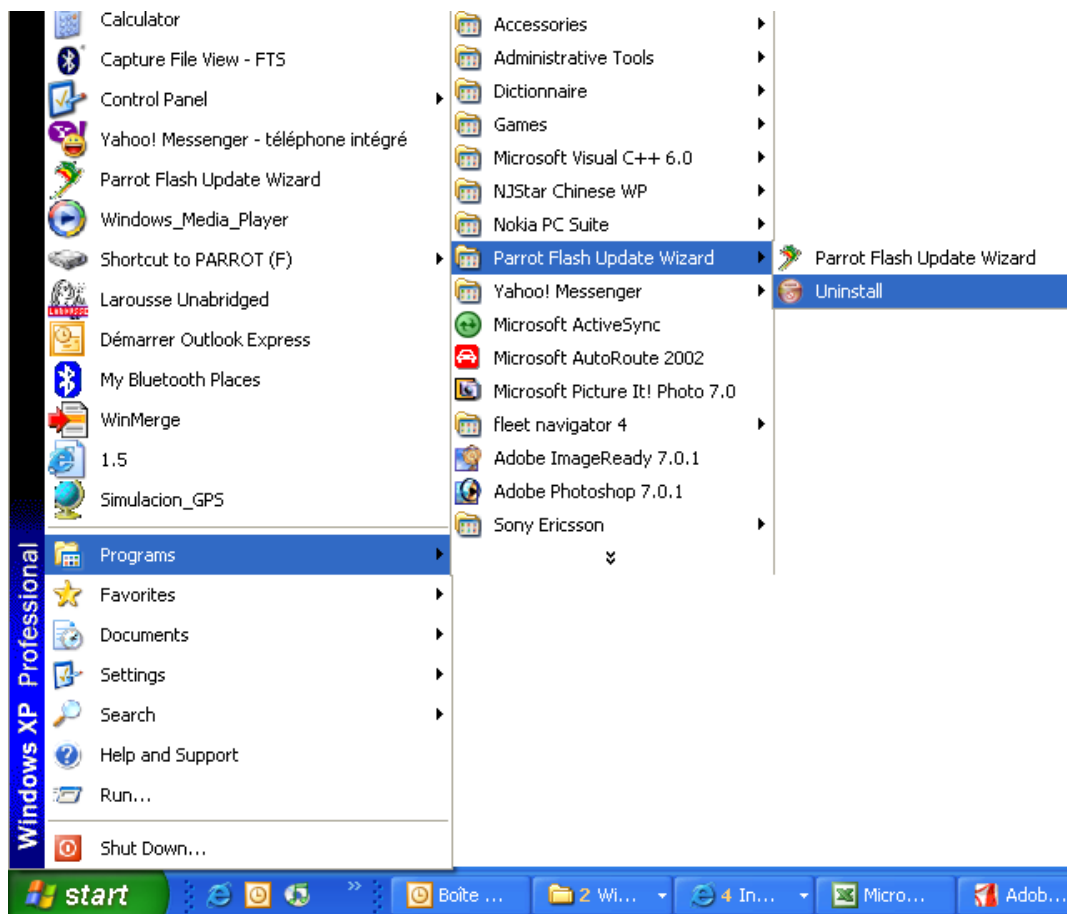
- **As an initial use, go to the website www.parrot.biz where you can get this latest version. Download it on your PC, and create a shortcut to launch Parrot Flash Update Wizard by the menu « Start » of your PC. Then, launch this software that should appear this way :**





PFUW Software already installed but needing to be updated

- In all other cases, secure the fact that you have at least VERSION 3.3.0.1. If this is the case, please go to next section mentioned « Parrot Dongle » of this document. Otherwise, if you already possess an preceding version of PFUW, select and execute the Uninstalling Application of Parrot Flash Update Wizard on your PC.



- Once removed the old version, go onto our internet website: www.parrot.biz in section SUPPORT \ DOWNLOADING to get the LATEST version on-line of Parrot Flash Update Wizard.



Parrot Dongle

This device has the form of a Bluetooth key, that will be nominated further in this document under the term 'key'.



- Please take notice that Parrot Dongle drivers are correctly installed on your PC. Please refer to the Parrot Dongle leaflet for further details.
- Insert your Parrot Dongle inside one of the USB ports of your PC to start the installation of your new software devoted for your Parrot Viewer. Indeed, the update of Parrot Viewer will operate by the means of Parrot Dongle and the Bluetooth link thus created.





Updating your Parrot Viewer.

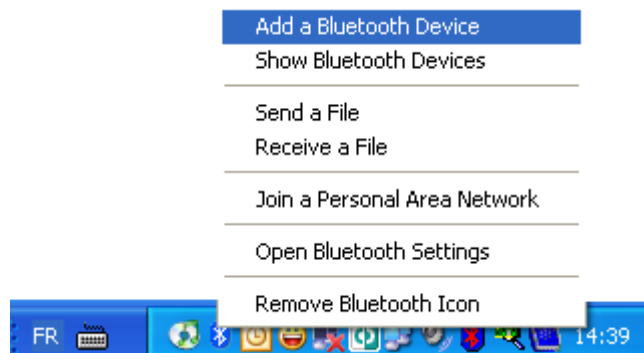
Updating your Parrot Viewer is effectuated along a chain of events inescapable. May you miss one step or not respect a sequence and you are bound to encounter difficulties in the update process concerning the Parrot Viewer.

Preliminary Settings

- Would you please ensure that your Parrot Viewer is powered ON,
- Please press on the central knob on the back-end behind the screen of your Parrot Viewer to make appear the menus of the Parrot Viewer, over the images displayed (overimpressed),
- Then, move the pointer with the two arrows on the backside of the screen [each on either sides of the central knob] and select the icon referenced by 'Settings',
- Enter this menu in pressing the central knob,
- Once reached this menu, select the 'Bluetooth' icon with the central knob (with the same process), and check that the option 'Visible' is set. If this were not the case, set the option 'Visible' in place of 'Hidden' with the central knob,
- Go back to the initial mode – Idle mode – in selecting the 'Exit' icon.

Bluetooth Serial Connection with Parrot Dongle

- Once inserted the Bluetooth key in one of your PC USB ports, an installation process will be initiated automatically so as to use the services available on the key. An icon then appears in the bottom right corner of your PC toolbar. The installation can now begin :
- Right-click on this icon to make appear a multiple-choice menu and select 'Add a Bluetooth Device',

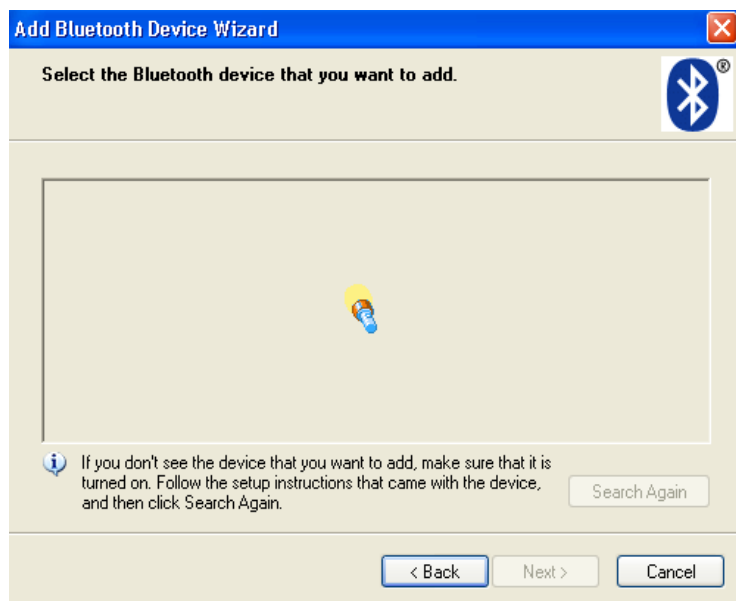




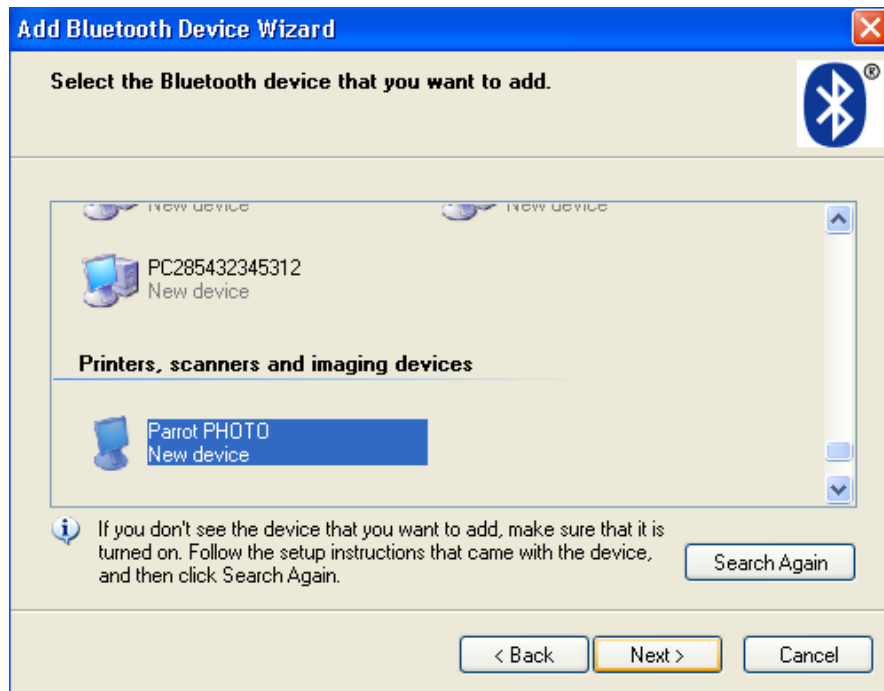
- Check the option 'My Device is set up and ready to be found', then 'Next',



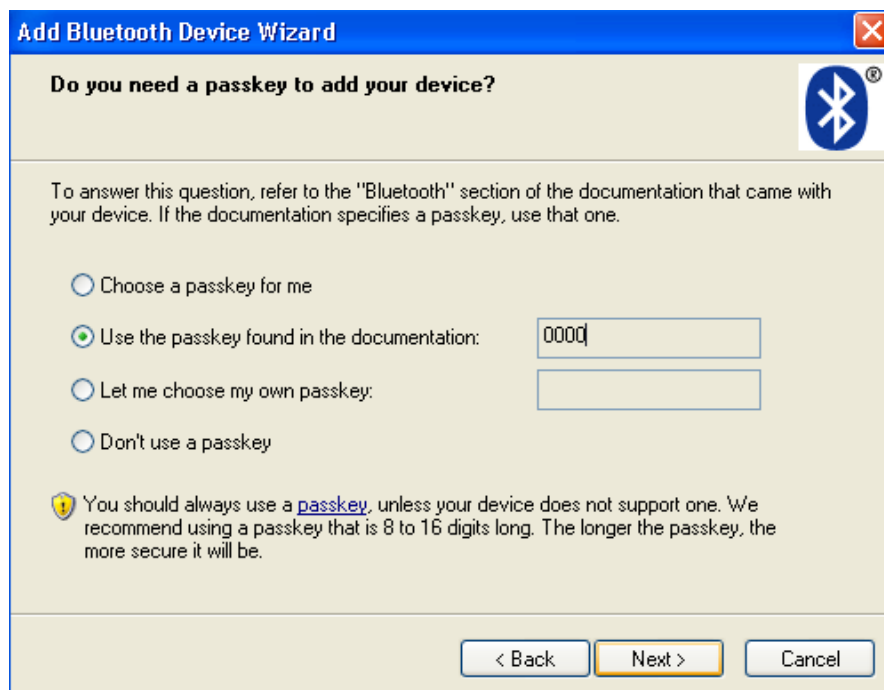
- The Parrot Dongle begins to search for neighboring Bluetooth devices,



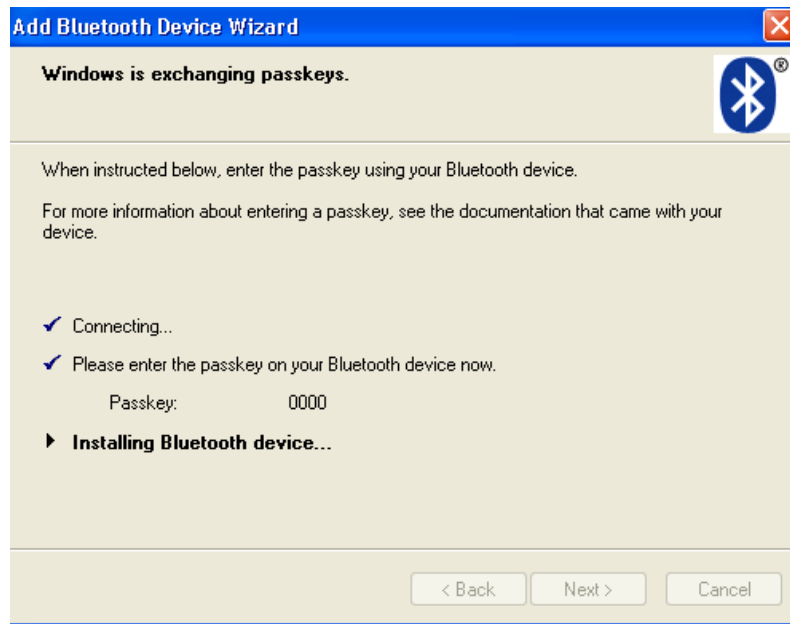
- Select your Parrot Viewer displayed under the friendly name 'Parrot PHOTO', then click on 'Next',



- A window appears on your screen prompting to enter a PIN code : select 'Use the passkey found in the documentation' and enter code « 0000 » in the field left for Bluetooth security code then validate,



- The Parrot Dongle gets in contact with Parrot Viewer, thanks to the passkey and proceeds to the Bluetooth link initialisation,



- The Parrot Dongle ends this initialisation and finally displays the serial port number on which Bluetooth protocol and flashing will establish - 'Outgoing COM Port'. Please note this number carefully (COM66 here) to remind it later in the Bluetooth update process of the PFUW.

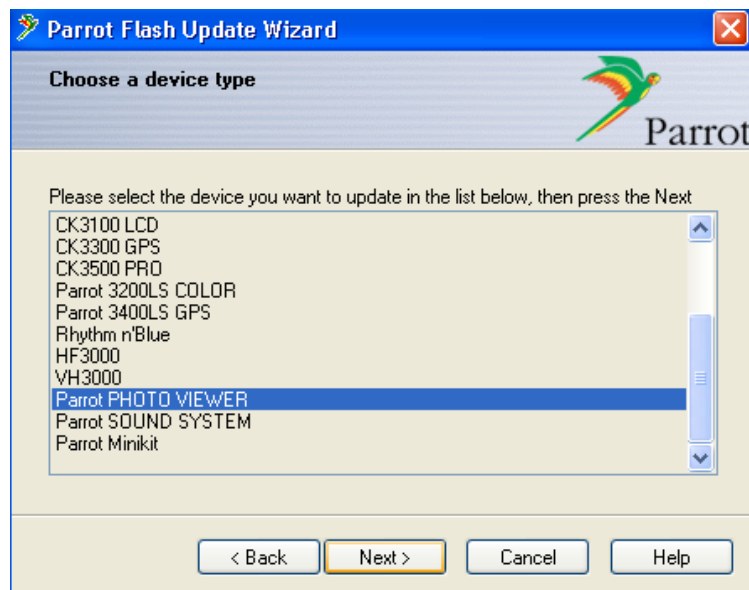


Flashing with PFUW via Serial Bluetooth Connection

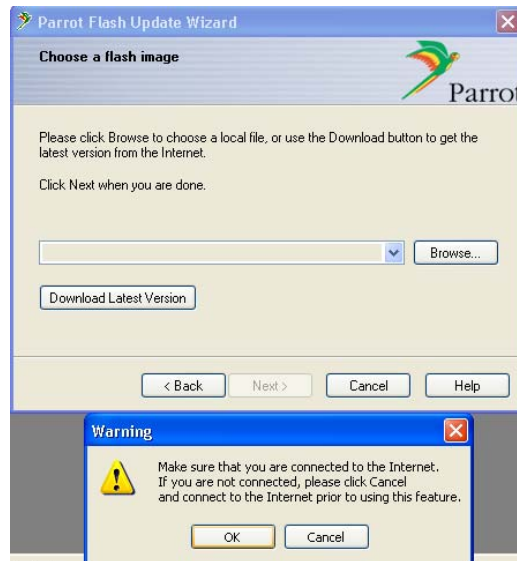
- With the Parrot Dongle always plugged, please launch software PFUW,



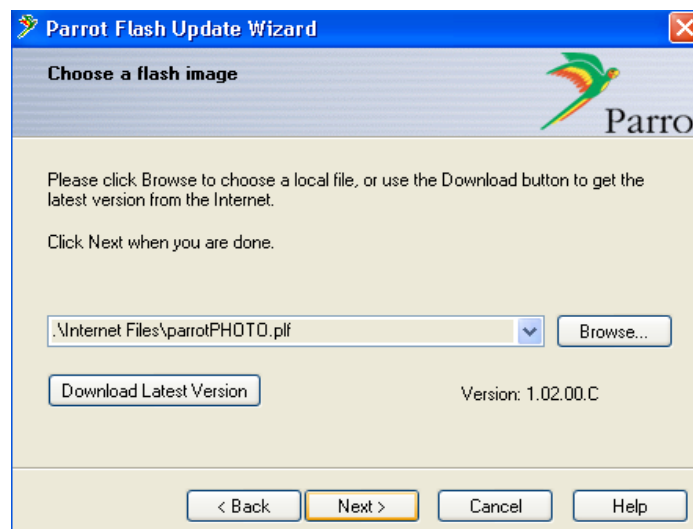
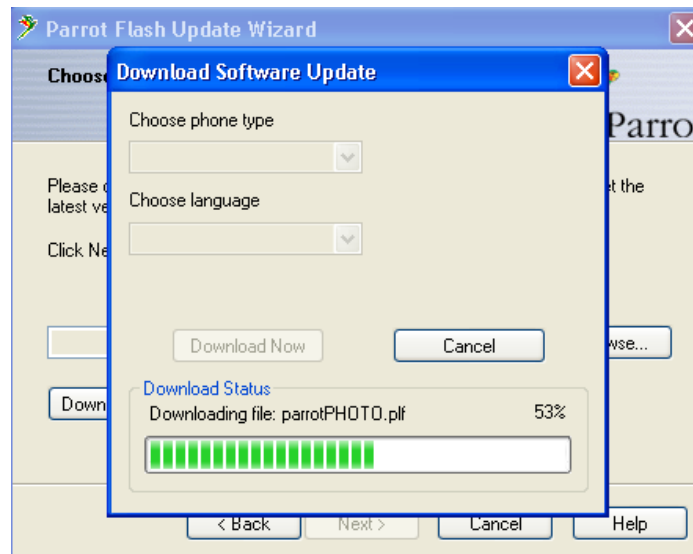
- **Select « Parrot PHOTO VIEWER » indicating your Parrot Viewer product and click on « Next » ,**



- **Select 'Download Latest Version' in order to repatriate for sure the latest software corresponding to your Parrot Viewer product. To accomplish this, an Internet connection is necessary,**

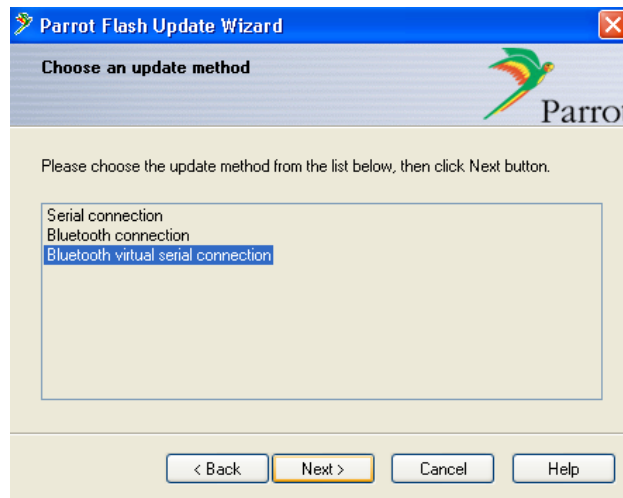


- **Please wait for the thorough transfer of the software from the Parrot Server. Once the transfer executed, check for two things :**
 - **the file format presented under the '.plf' and**
 - **the software version number inscribed under the file name.****Click on 'Next' to follow,**

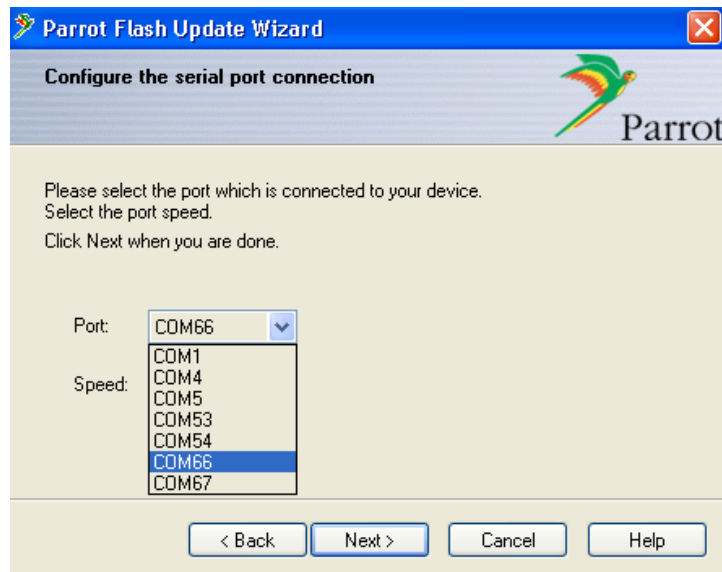




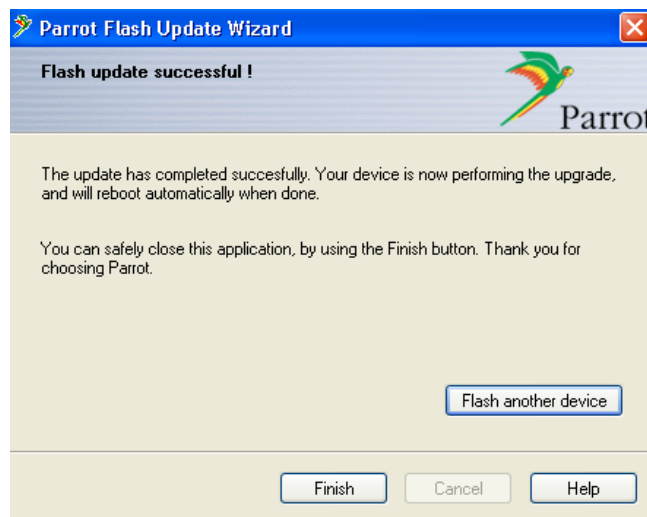
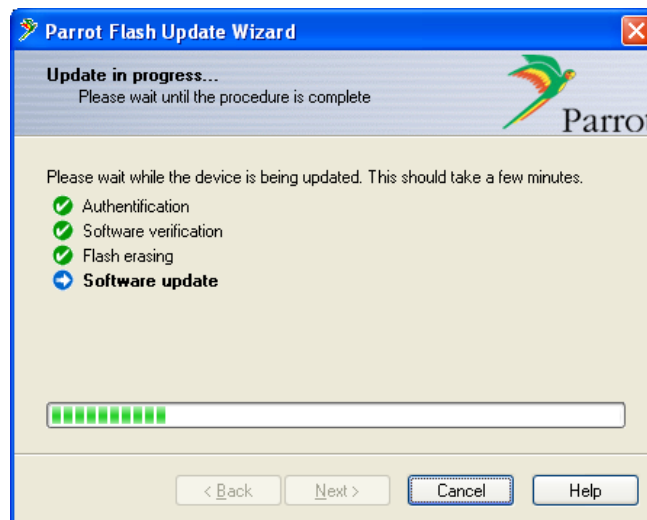
- Select the 'Bluetooth Virtual Serial Connection' option,



- Select the serial port number accommodated to your Parrot Viewer. This number has been set up during the preceding stage along which Parrot Dongle reconciled with Parrot Viewer. If we follow suit our exemple, we had COM66 as 'Outgoing COM Port' set. Check for other parameters : flashing speed fixed to 115200 bauds, then click on "Next".



- Your Parrot Viewer update starts automatically. During the time of this procedure, do not remove the power supply neither the Bluetooth key and do not interrupt flashing in progress via the software interface of PFUW.



- **Flashing is finished. Your Parrot Viewer has been updated. During this procedure, on the screen of the Viewer, some messages could have been displayed, such as : 'flashing in progress, 'flashage terminated'. At the end of flashing, Parrot Viewer comes OFF (during all this time, do not unplug power supply) and then switches ON automatically with the new version operational.**