

Parrot 3400 LS-GPS with HTC Touch and TomTom Navigator 6



Teste with ROM : 1.11.406.1B.FRE



HTC Touch



Parrot 3400 LS-GPS

with TomTom Navigator 6



SETUP PROCEDURES

- Features
- I/ 3400 LS-GPS Pairing Procedure
- II/ GPS Connection
- III/ TomTom Navigator 6 Setup Procedure
- IV/ Plan a Route



Features

- Two Bluetooth connections at the same time : GPS and Handsfree.
- Voice navigation instructions through PDA headspeakers ONLY
- Voice navigation instructions are NOT played DURING a call
- **Automatic** switch between GPS software and phone applications when using red and green carkits buttons (especially on “Incoming” and “Outgoing” Call)
- **Manual** return in navigation after: hanging up with the phone a call, picking up by the phone an “Incoming” call (then discrete mode)
- Automatic GPS connection (if option activated into Settings/GPS/Settings/“Connection on Start Up”)

Mandatory : **Valid GPS signal** is needed to establish stable “GPS connection” between **Parrot 3400 LS-GPS with HTC Touch** (otherwise GPS disconnections)

Step I – 3400 LS-GPS Pairing Procedure



Parrot 3400 LS-GPS
"Idle Mode" with Valid
GPS signal



Please go into the menu
"SETTINGS" of the carkit



Step I – 3400 LS-GPS Pairing Procedure



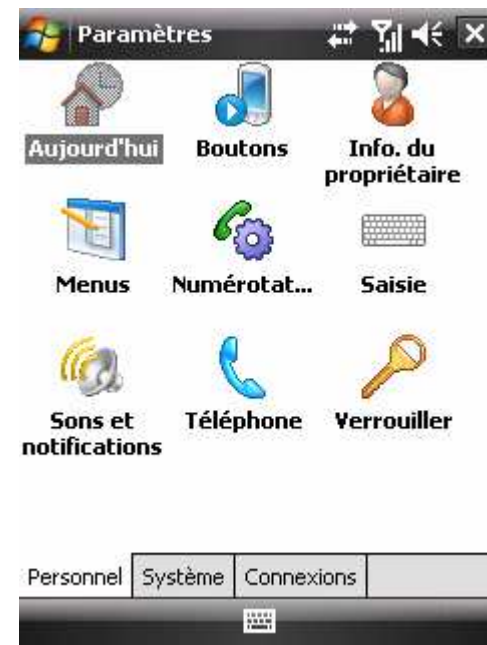
Then, go into the menu
"PAIR WITH PHONE \ OTHERS PHONES". The
carkit will display a random PIN code.



Step I – 3400 LS-GPS Pairing Procedure



From the Smartphone Idle screen, please select the "START" menu. Select the "SETTINGS" command



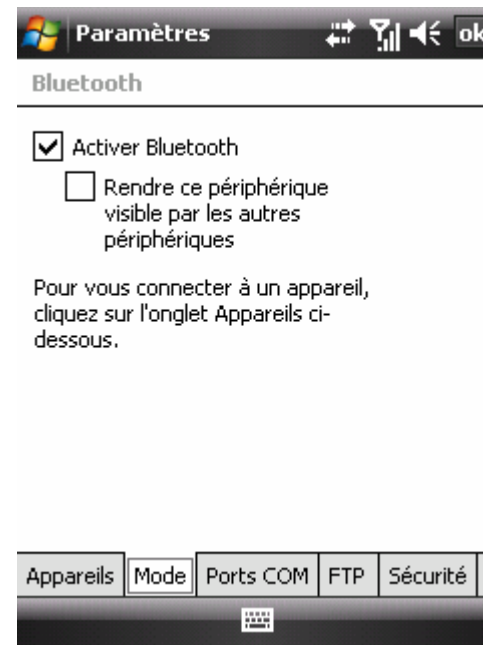
Select the "CONNECTIONS" tab



Step I – 3400 LS-GPS Pairing Procedure



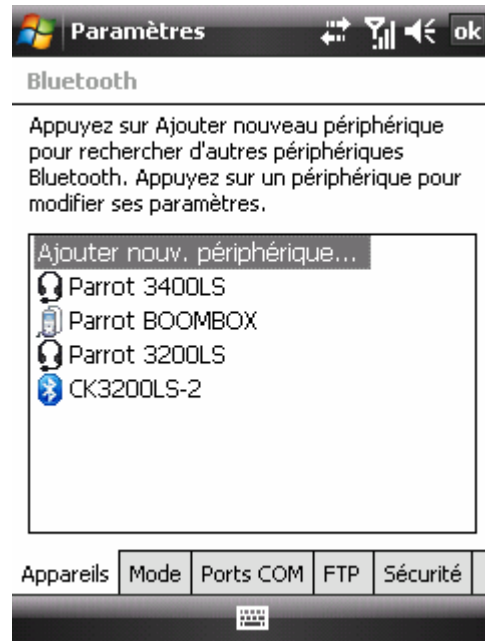
Select the "BLUETOOTH" icon



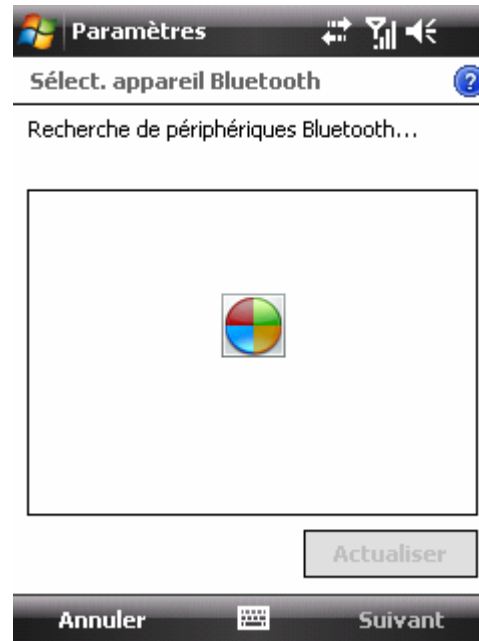
Please make sure that the Bluetooth is ON and then tap on the "DEVICES" tab



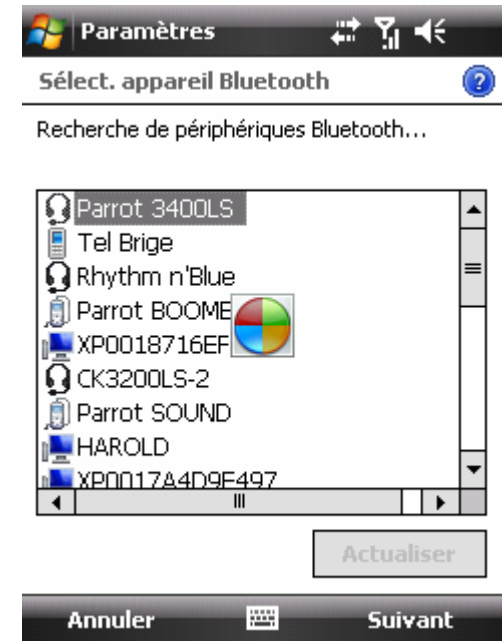
Step I – 3400 LS-GPS Pairing Procedure



Select the "Add NEW DEVICE ..." command



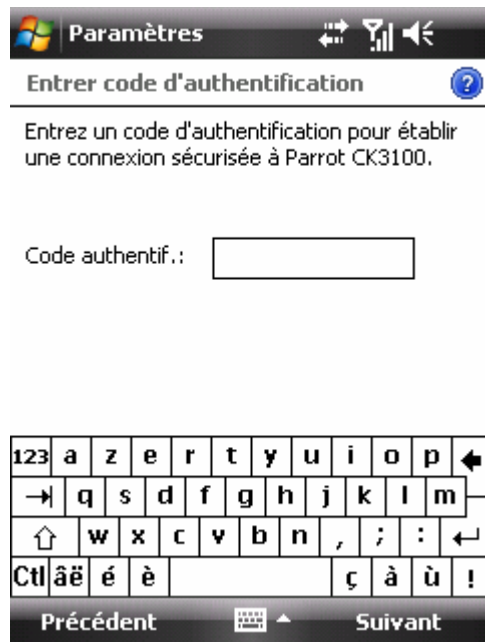
HTC Touch searches for Bluetooth devices



Select your Parrot 3400 LS-GPS



Step I – 3400 LS-GPS Pairing Procedure



Position your Parrot into the mode "Settings / Pair a phone / Other phones"
Enter the "PIN CODE" displayed by the car kit



Activate the HandsFree and Serial Port services.



Handsfree Pairing is done, a connection will be done automatically



Step I – 3400 LS-GPS Pairing Procedure



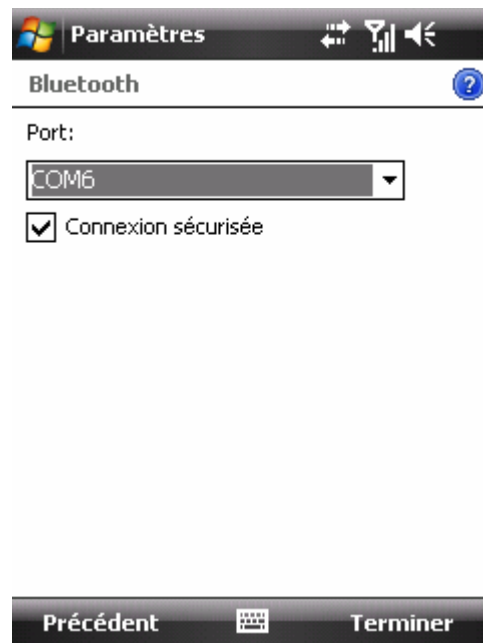
On the “COM PORTS” tab, please select the “NEW OUTGOING PORT” command



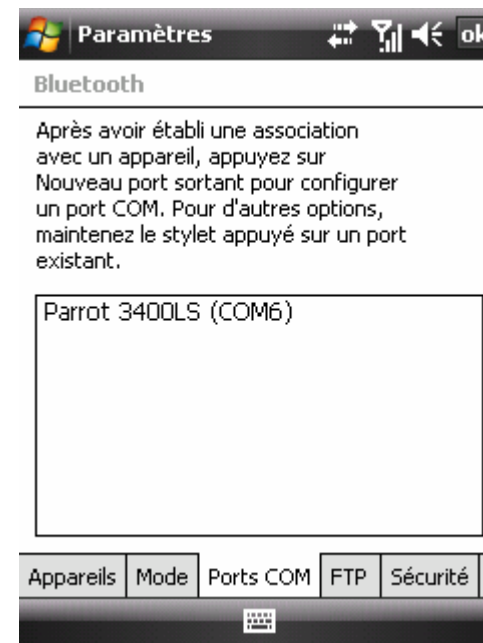
Select your Parrot 3400 LS-GPS among the diverse devices found.



Step I – 3400 LS-GPS Pairing Procedure



Select the “COM6 OUTGOING PORT” (preferentially COM6 or COM7 if possible)



An Outgoing COM port has been created



Step II – GPS Connection



HandsFree connection is established. Now, let us operate the GPS connection.

Step II – GPS Connection



Navigate to the Parrot 3400 LS-GPS menu (the fourth one from the idle mode)



Go into the "ACTIVATE / DEACTIVATE" menu of the Parrot 3400 LS-GPS



Make sure the GPS feature is "Activated"



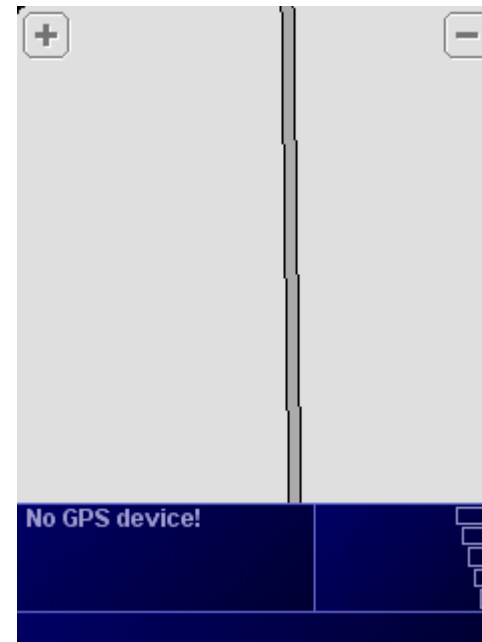
Step II – GPS Connection

Press the carkit's RED BUTTON for at least three seconds. Your carkit and your mobile phone will be disconnected and a pop-up "Please connect GPS" appears on the Parrot 3400 LS-GPS

Step III – TomTom Navigator 6 Setup Procedure



Please start your “TomTom Navigator 6” software in the menu “Programs”



“TomTom Navigator 6” start screen without GPS signal: you need to configure GPS reception – please tap on the screen



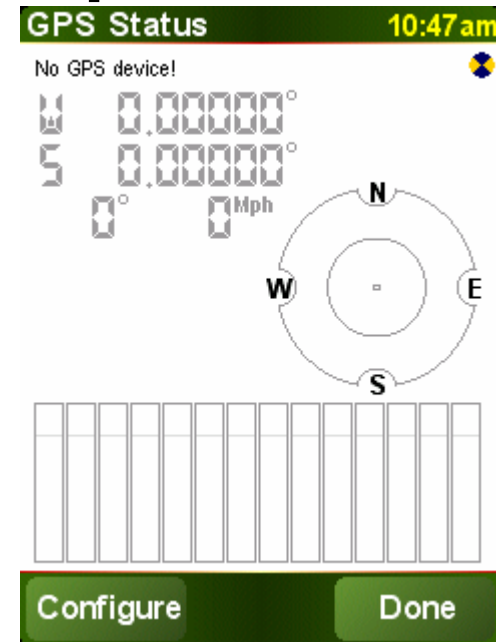
Step III – TomTom Navigator 6 Setup Procedure



Tap on "Change Preference"



Select the "GPS Status" icon



Choose the "Configure" option and validate



Step III – TomTom Navigator 6 Setup Procedure

The first screenshot shows the 'Select your GPS receiver' screen. It features an image of the Parrot 3400 LS-GPS receiver and a 'Select' button. The second screenshot shows a blue screen with the text: 'Please establish a Bluetooth connection between your Bluetooth GPS receiver and your device. For details, see the manual for your GPS receiver and your device.' and a 'Continue' button. The third screenshot shows the 'GPS Status' screen at 10:48 am. It displays coordinates (E 2.37230°, N 48.86124°), speed (177° 20 Mph), and a compass rose. A list of COM ports is shown at the bottom, with 'COM6' highlighted. The status bar at the top indicates 'GPS is connected to: 9:55 am'.

Please select "Other Bluetooth receiver" – then press on "continue"

Select the port you have just defined as the GPS channel beforehand ("COM6" for our example)

Your Parrot 3400 LS-GPS is now defined as the source of GPS signal for TomTom



Step IV – Plan a route



On the HOME screen, tap on the "Navigate to" icon

You have different options available to define your destination.

Option #1: Choose "Point on Map" and tap on the map to define your destination

Parrot 3400 LS-GPS with HTC Touch and TomTom Navigator 6



Step IV – Plan a route

The screenshots illustrate the following steps:

- Step 1:** Main Menu 2 of 3. Options include Advanced planning, Browse map, Clear route, View route, and Itinerary planning. Current position: Place D'italie.
- Step 2:** Depart from: 11:01am. Options include City center, Street and house number, Zip Code, and Cross street or intersection. Current position: Avenue D'italie.
- Step 3:** Pick a destination: 11:01am. Same options as Step 2. Current position: Avenue D'italie.
- Step 4:** Street: Boli|. List of suggestions: Bolivar Station, Avenue Simón..., Place De Bolovie, Square Bolivar. A keyboard is shown for input.
- Step 5:** What type of route should be planned... Options: Fastest route (selected), Shortest route, Avoid freeways, Walking route, Bicycle route, Limited speed.
- Step 6:** Depart from: 11:01am. Options include Home, Favorite, Address, Recent destination, and Point of Interest. Current position: Place D'italie.
- Step 7:** City: | Paris (Paris). A keyboard is shown for input.
- Step 8:** Street: | Paris (Paris). A keyboard is shown for input.
- Step 9:** House number: 11:02am. A numeric keypad is shown for input.
- Step 10:** Avenue Simón Bolivar 43, Paris (Pa...). A map shows the route. Estimated time: 0:10 hrs - 3.1M. Fastest route. Details and Done buttons are visible.

Option #2: Choose "Address"

Option #2: Choose "Street and house number"

Option #2: enter the precise address. Define the City, then the Street, then the number of your destination



Step IV – Plan a route



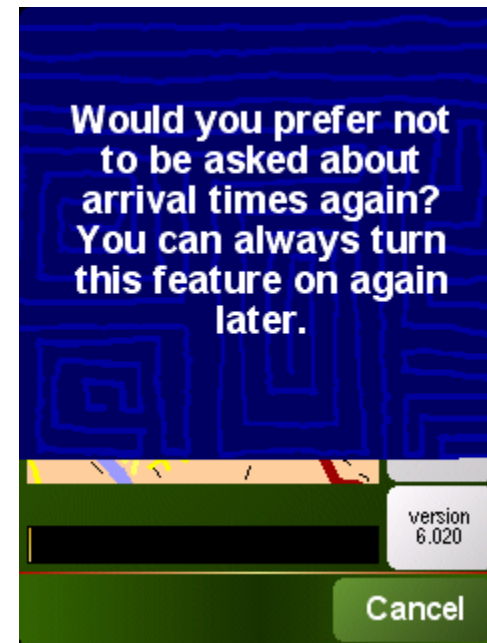
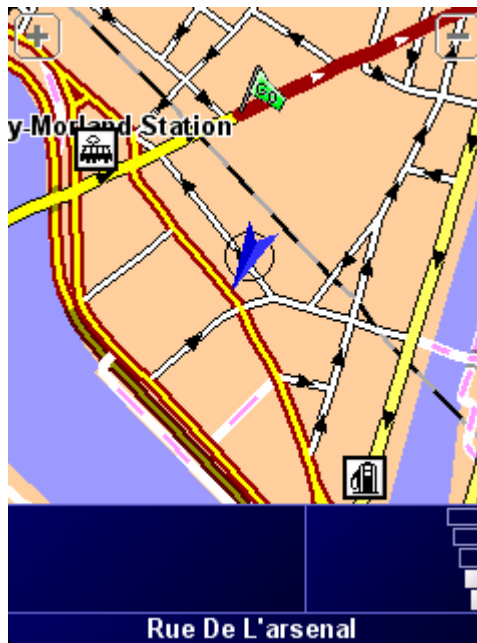
The TomTom software calculates the journey to the destination you entered

Tap on Details to simulate your itinerary, then “Display a demo of the itinerary”, then select the speed of demo (200%)

The simulation is launched



Step IV – Plan a route



Navigation with "TomTom Navigator 6"