

Parrot 3400 LS-GPS with i-Mate JAQ3 and TomTom Navigator 6



Teste with ROM : 10.158



i-Mate JAQ3

with TomTom Navigator 6



Parrot 3400 LS-GPS



SETUP PROCEDURES

- Features
- I/ 3400 LS-GPS Pairing Procedure
- II/ GPS Connection
- III/ TomTom Navigator 6 Setup Procedure
- IV/ Plan a Route



Features

- Two Bluetooth connections at the same time : GPS and Handsfree.
- Voice navigation instructions through PDA headspeakers ONLY
- Voice navigation instructions are NOT played DURING a call
- **Automatic** switch between GPS software and phone applications when using red and green carkits buttons (especially on “Incoming” and “Outgoing” Call)
- **Manual** return in navigation after: hanging up with the phone a call, picking up by the phone an “Incoming” call (then discrete mode)
- Automatic GPS connection (if option activated into Settings/GPS/Settings/“Connection on Start Up”)

Mandatory : **Valid GPS signal** is needed to establish stable “GPS connection” between **Parrot 3400 LS-GPS with i-Mate JAQ3** (otherwise GPS disconnections)

Step I – 3400 LS-GPS Pairing Procedure



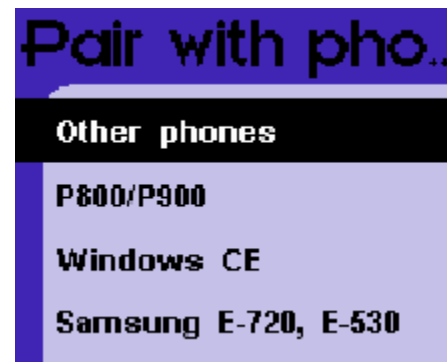
Parrot 3400 LS-GPS
"Idle Mode" with Valid
GPS signal



Please go into the menu
"SETTINGS" of the carkit



Step I – 3400 LS-GPS Pairing Procedure



Then, go into the menu
"PAIR WITH PHONE \ OTHERS PHONES". The
carkit will display a random PIN code.



Step I – 3400 LS-GPS Pairing Procedure



From the Smartphone Idle screen, please select the "START" menu. Select the "SETTINGS" command



Select the "CONNECTIONS" tab



Step I – 3400 LS-GPS Pairing Procedure



Select the "BLUETOOTH" icon



Please make sure that the Bluetooth is ON and then tap on the "DEVICES" tab



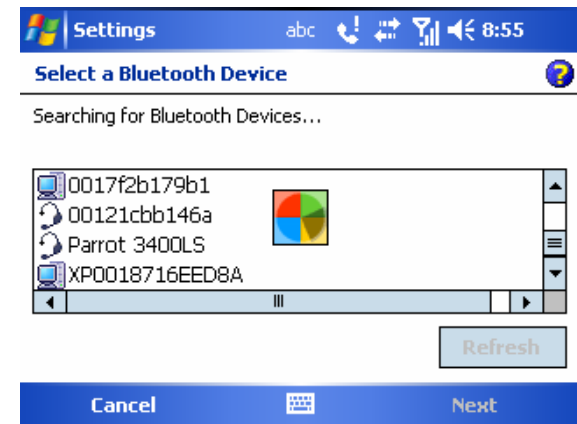
Step I – 3400 LS-GPS Pairing Procedure



Select the "Add NEW DEVICE ..." command



i-Mate JAQ3 searches for Bluetooth devices



Select your Parrot 3400 LS-GPS



Step I – 3400 LS-GPS Pairing Procedure

The image displays three sequential screenshots of the Windows Mobile settings application:

- Enter Passcode:** The screen shows the 'Enter Passcode' dialog. The text reads: 'Enter a passcode to establish a secure connection with 00025b00a5a5.' Below this is a text input field labeled 'Passcode:'. The bottom navigation bar contains 'Back' and 'Next' buttons.
- Partnership Settings:** The screen shows the 'Partnership Settings' dialog. The 'Display Name' field contains 'Parrot 3400LS'. Under 'Select services to use from this device.', the 'Hands Free' and 'Serial Port' checkboxes are checked. A 'Refresh' button is located at the bottom right. The bottom navigation bar contains 'Cancel' and 'Save' buttons.
- Bluetooth:** The screen shows the 'Bluetooth' settings page. The text reads: 'Tap Add new device to search for other Bluetooth devices. Tap on a device to modify its settings.' Below this is a list of devices with an 'Add new device...' button at the top. The device 'Parrot 3400LS' is listed. The bottom navigation bar contains 'Mode', 'Devices', and 'COM Ports' tabs.

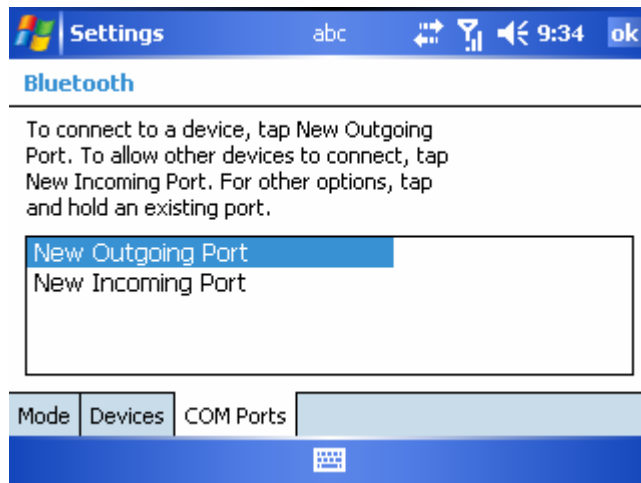
Enter the “PIN CODE” displayed by the car kit

Activate the HandsFree and Serial Port services.

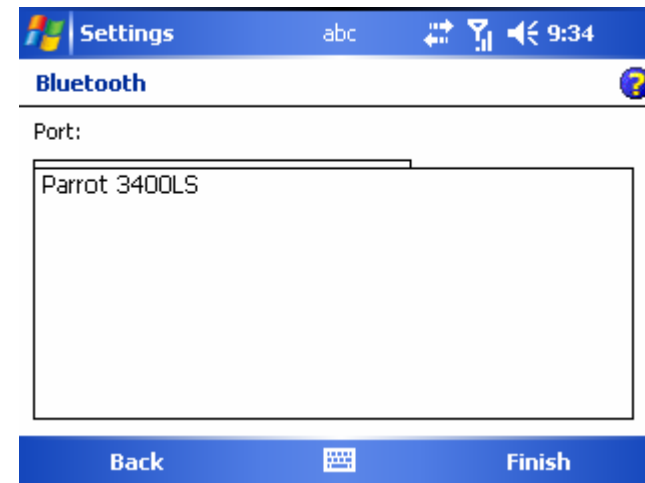
Handsfree Pairing is done, a connection will be done automatically



Step I – 3400 LS-GPS Pairing Procedure



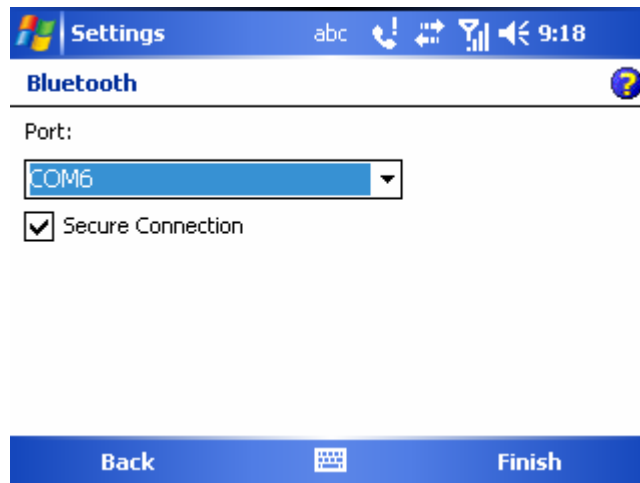
On the “COM PORTS” tab, please select the “NEW OUTGOING PORT” command



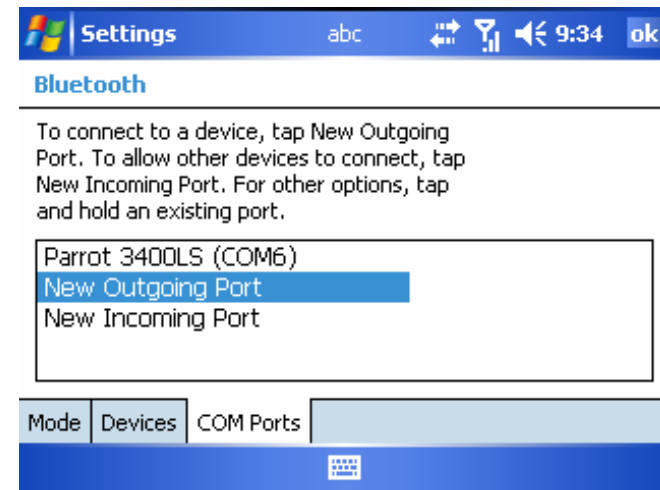
Select your Parrot 3400 LS-GPS among the diverse devices found.



Step I – 3400 LS-GPS Pairing Procedure



Select the “COM6 OUTGOING PORT” (preferentially COM6 or COM7 if possible)



An Outgoing COM port has been created



Step II – GPS Connection



HandsFree connection is established. Now, let us operate the GPS connection.

Step II – GPS Connection



Navigate to the Parrot 3400 LS-GPS menu (the fourth one from the idle mode)



Go into the "ACTIVATE / DEACTIVATE" menu of the Parrot 3400 LS-GPS



Make sure the GPS feature is "Activated"



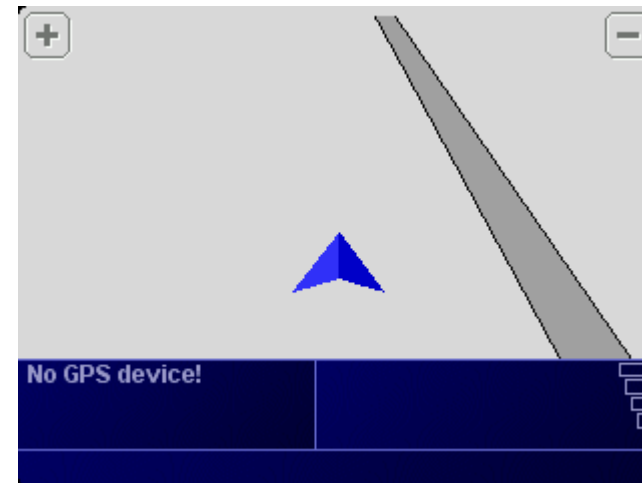
Step II – GPS Connection

Press the carkit's RED BUTTON for at least three seconds. Your carkit and your mobile phone will be disconnected and a pop-up "Please connect GPS" appears on the Parrot 3400 LS-GPS

Step III – TomTom Navigator 6 Setup Procedure



Please start your “TomTom Navigator 6” software in the menu “Programs”



“TomTom Navigator 6” start screen without GPS signal: you need to configure GPS reception – please tap on the screen



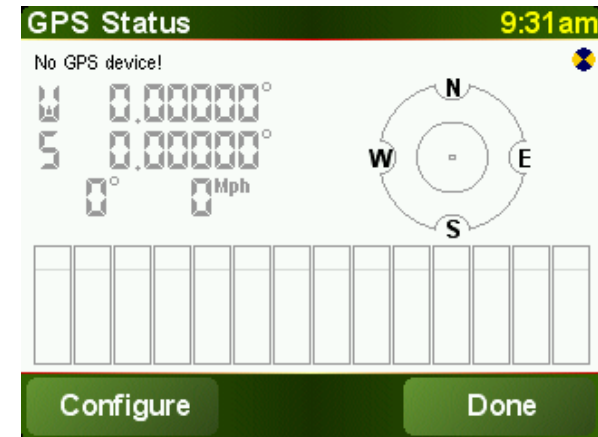
Step III – TomTom Navigator 6 Setup Procedure



Tap on "Change Preference"



Select the "GPS Status" icon



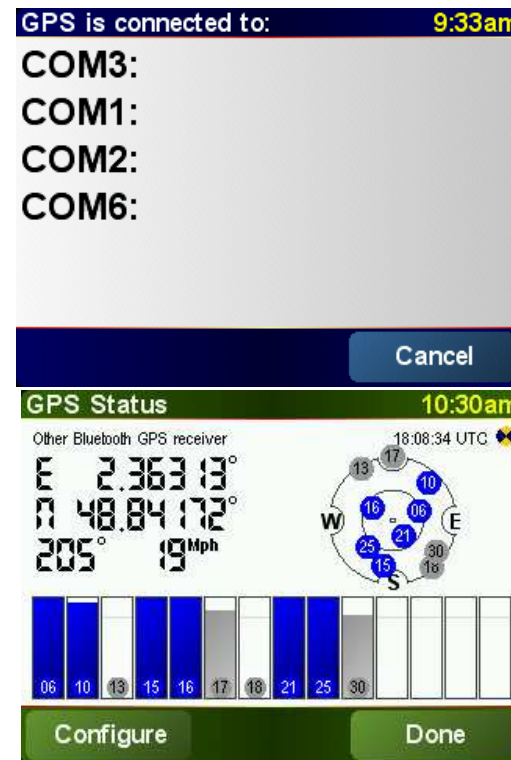
Choose the "Configure" option and validate



Step III – TomTom Navigator 6 Setup Procedure



Please select "Other Bluetooth receiver" – then press on "continue"



Select the port you have just defined as the GPS channel beforehand ("COM0" for our example)

Your Parrot 3400 LS-GPS is now defined as the source of GPS signal for TomTom



Step IV – Plan a route



On the HOME screen, tap on the "Navigate to" icon

You have different options available to define your destination.

Option #1: Choose "Point on Map" and tap on the map to define your destination



Step IV – Plan a route



Option #2: Choose "Address"



Option #2: Choose "Street and house number"



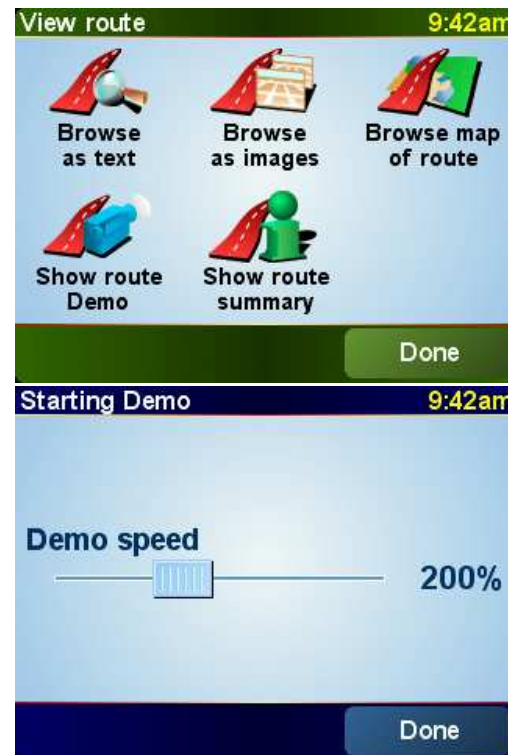
Option #2: enter the precise address. Define the City, then the Street, then the number of your destination



Step IV – Plan a route



The TomTom software calculates the journey to the destination you entered



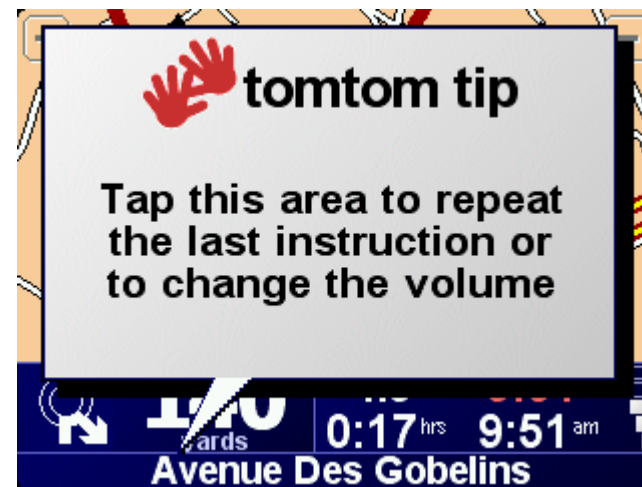
Tap on Details to simulate your itinerary, then "Display a demo of the itinerary", then select the speed of demo (200%)



The simulation is launched



Step IV – Plan a route



Navigation with "TomTom Navigator 6"