



# Parrot 3400 LS-GPS with HTC TyTN (equivalent of i-Mate JASJAM or Qtek 9600) and TomTom Navigator 6

Teste with ROM : 1.18.256.2



**HTC TyTN  
with TomTom Navigator 6**



**Parrot 3400 LS-GPS**



# SETUP PROCEDURES

- Features
- I/ 3400 LS-GPS Pairing Procedure
- II/ GPS Connection
- III/ TomTom Navigator 6 Setup Procedure
- IV/ Plan a Route



# Features

- GPS and Handsfree connections at the same time.
- Voice navigation instructions through PDA headspeakers ONLY.
- Automatic switch between GPS and phone applications (especially Incoming and Outgoing Call).
- Voice navigation instructions are NOT played DURING a call
- Automatic GPS connection

Mandatory : **Valid GPS signal** is needed to establish stable “GPS connection” between **Parrot 3400 LS-GPS with HTC TyTN** (otherwise GPS disconnections)

Parrot 3400 LS-GPS with HTC TyTN (equivalent of i-Mate JASJAM or Qtek 9600) and TomTom Navigator 6



## Step I – 3400 LS-GPS Pairing Procedure



Parrot 3400 LS-GPS  
"Idle Mode" with  
Valid GPS signal



Please go into the menu  
"SETTINGS" of the carkit



## Step I – 3400 LS-GPS Pairing Procedure



Then, go into the menu  
"PAIR WITH PHONE \ OTHERS PHONES".  
The carkit will display a random PIN  
code.

# Parrot 3400 LS-GPS with HTC TyTN (equivalent of i-Mate JASJAM or Qtek 9600) and TomTom Navigator 6



## Step I – 3400 LS-GPS Pairing Procedure



From the Smartphone Idle screen, please select the "START" menu. Select the "SETTINGS" command



Select the "CONNECTIONS" tab

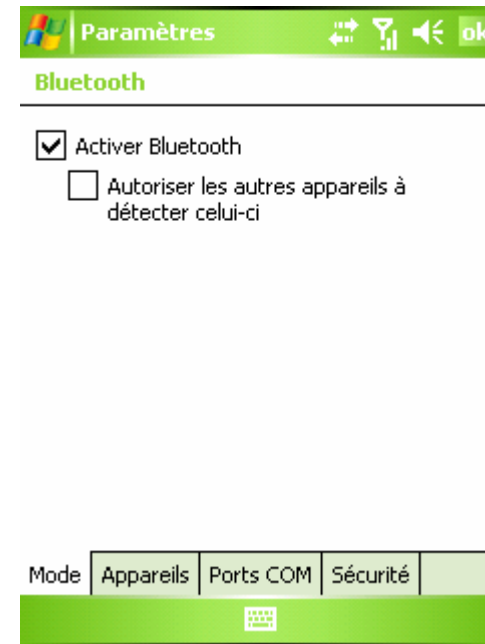
# Parrot 3400 LS-GPS with HTC TyTN (equivalent of i-Mate JASJAM or Qtek 9600) and TomTom Navigator 6



## Step I – 3400 LS-GPS Pairing Procedure



Select the "BLUETOOTH" icon



Please make sure that the Bluetooth is ON and then tap on the "DEVICES" tab

# Parrot 3400 LS-GPS with HTC TyTN (equivalent of i-Mate JASJAM or Qtek 9600) and TomTom Navigator 6



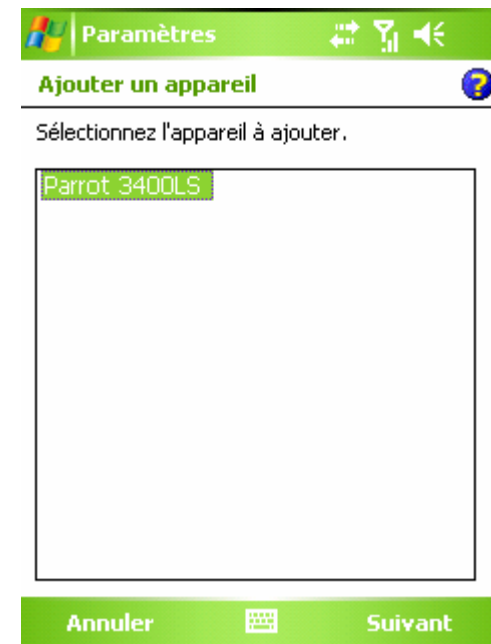
## Step I – 3400 LS-GPS Pairing Procedure



Select the "NEW PARTNERSHIP" command



HTC TyTN searches for Bluetooth devices



Select your Parrot 3400 LS-GPS



## Step I – 3400 LS-GPS Pairing Procedure

Enter the “PIN CODE” displayed by the car kit

Activate the HandsFree and Serial Port services.

Handsfree Pairing is done, a connection will be done automatically

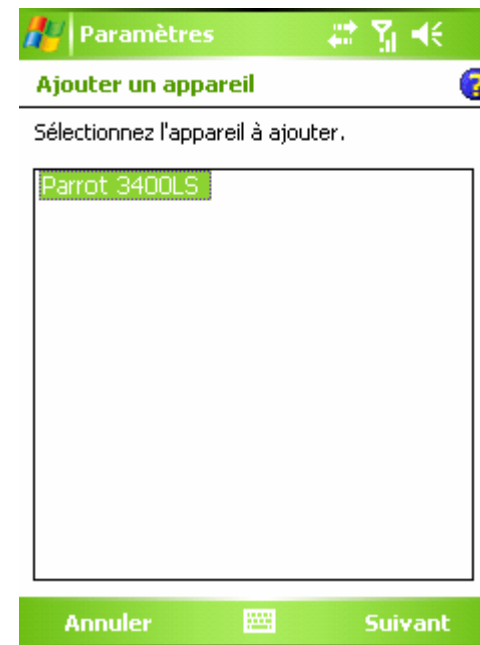
# Parrot 3400 LS-GPS with HTC TyTN (equivalent of i-Mate JASJAM or Qtek 9600) and TomTom Navigator 6



## Step I – 3400 LS-GPS Pairing Procedure



On the “COM PORTS” tab,  
please select the “NEW  
OUTGOING PORT” command

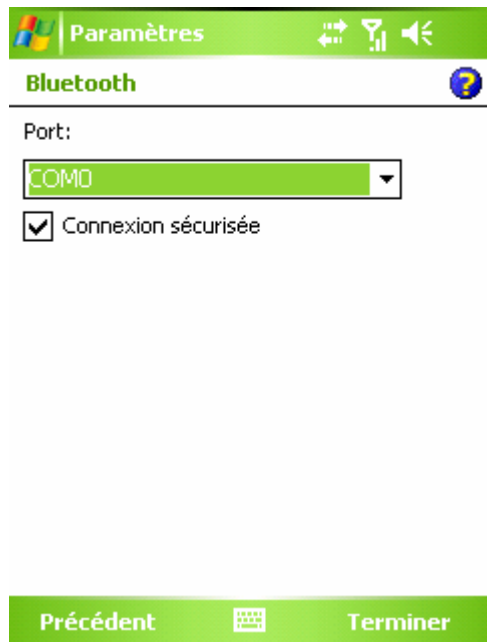


Select your Parrot 3400 LS-GPS  
among the diverse devices  
found.

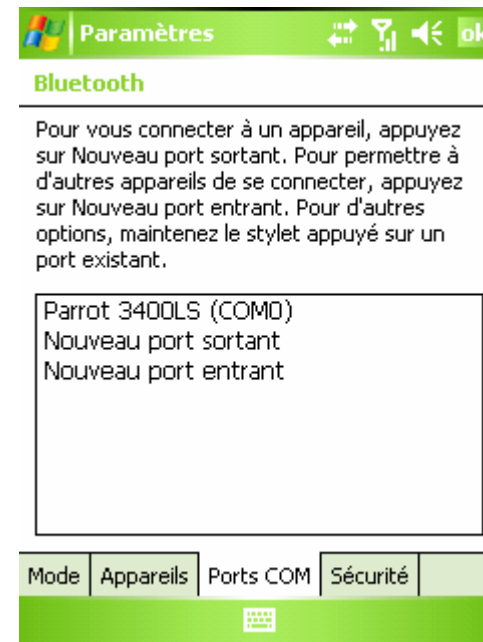
# Parrot 3400 LS-GPS with HTC TyTN (equivalent of i-Mate JASJAM or Qtek 9600) and TomTom Navigator 6



## Step I – 3400 LS-GPS Pairing Procedure



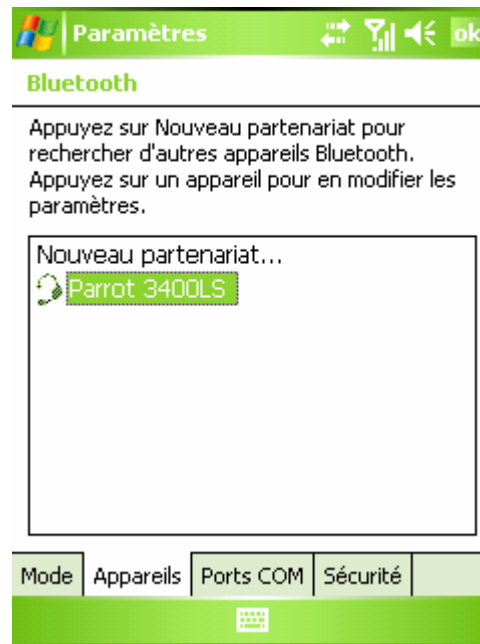
Select the “COM0 OUTGOING PORT” (or preferentially COM6 or COM7 if possible)



An Outgoing COM port has been created

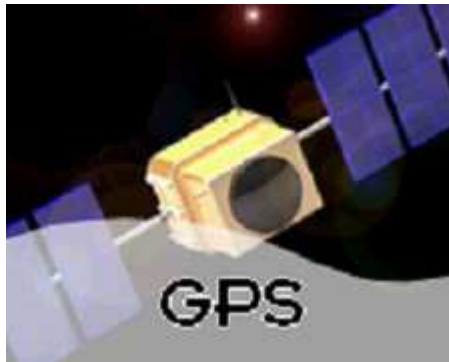


## Step II – GPS Connection



HandsFree connection is established. Now, let us operate the GPS connection.

## Step II – GPS Connection



Navigate to the Parrot 3400 LS-GPS menu (the fourth one from the idle mode)



Go into the "ACTIVATE / DEACTIVATE" menu of the Parrot 3400 LS-GPS



Make sure the GPS feature is "Activated"

Parrot 3400 LS-GPS with HTC TyTN (equivalent of i-Mate JASJAM or Qtek 9600) and TomTom Navigator 6



## Step II – GPS Connection

Press the carkit's RED BUTTON for at least three seconds. Your carkit and your mobile phone will be disconnected and a pop-up "Please connect GPS" appears on the Parrot 3400 LS-GPS

## Step III – TomTom Navigator 6 Setup Procedure



Please start your “TomTom Navigator 6” software in the menu “Programs”



“TomTom Navigator 6” start screen without GPS signal: you need to configure GPS reception – please tap on the screen



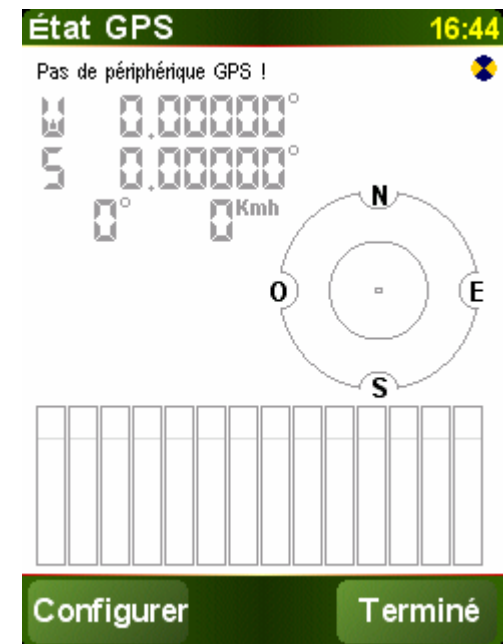
## Step III – TomTom Navigator 6 Setup Procedure



Tap on "Change Preference"

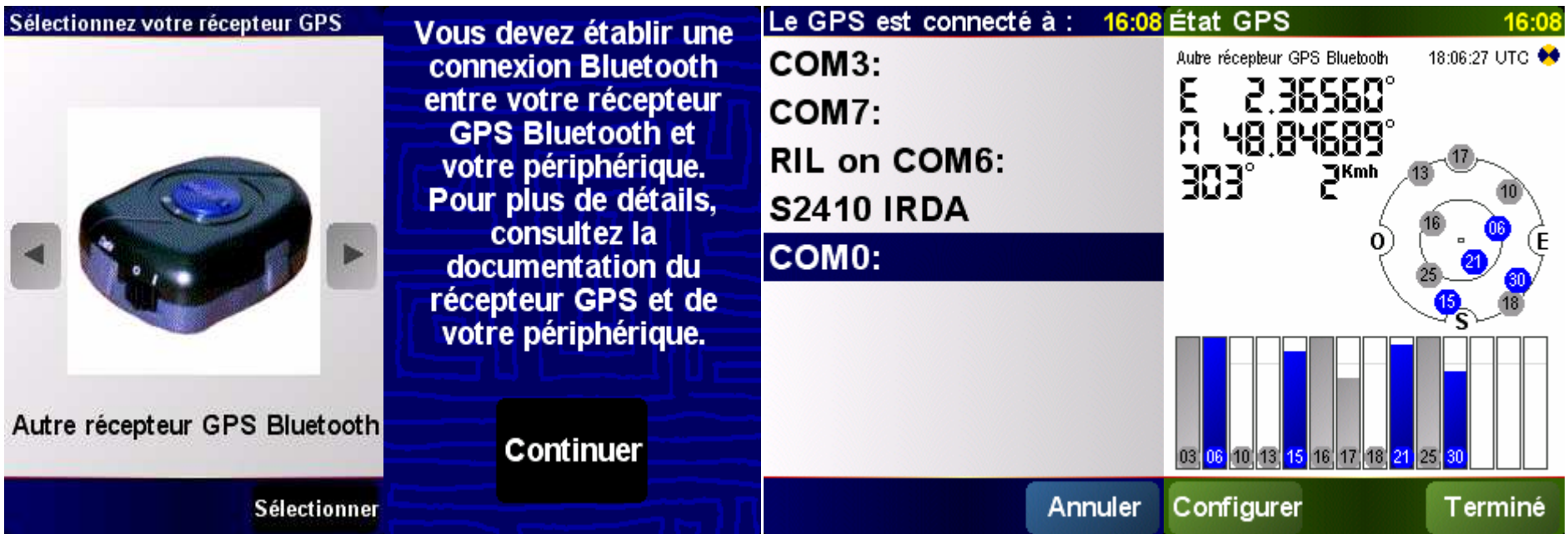


Select the "GPS Status" icon



Choose the "Configure" option and validate

## Step III – TomTom Navigator 6 Setup Procedure



The screenshot shows the TomTom Navigator 6 setup interface. It is divided into three main sections:

- Left Panel:** Titled "Sélectionnez votre récepteur GPS". It features an image of a black GPS receiver. Below the image, it says "Autre récepteur GPS Bluetooth" and "Sélectionner".
- Middle Panel:** Contains the text: "Vous devez établir une connexion Bluetooth entre votre récepteur GPS Bluetooth et votre périphérique. Pour plus de détails, consultez la documentation du récepteur GPS et de votre périphérique." Below this text is a large black button labeled "Continuer".
- Right Panel:** Titled "Le GPS est connecté à : 16:08 État GPS 16:08". It displays various status information: "Autre récepteur GPS Bluetooth 18:06:27 UTC", coordinates "E 2.36560°" and "N 48.84689°", "RIL on COM6: S2410 IRDA", and "COM0:". Below the text is a circular diagram representing a road network with numbered nodes (03, 06, 10, 13, 15, 16, 17, 18, 21, 25, 30) and a speed indicator "2 Km/h". At the bottom of the right panel are three buttons: "Annuler", "Configurer", and "Terminé".

Please select "Other Bluetooth receiver" – then press on "continue"

Select the port you have just defined as the GPS channel beforehand ("COM0" for our example)

Your Parrot 3400 LS-GPS is now defined as the source of GPS signal for TomTom

# Parrot 3400 LS-GPS with HTC TyTN (equivalent of i-Mate JASJAM or Qtek 9600) and TomTom Navigator 6



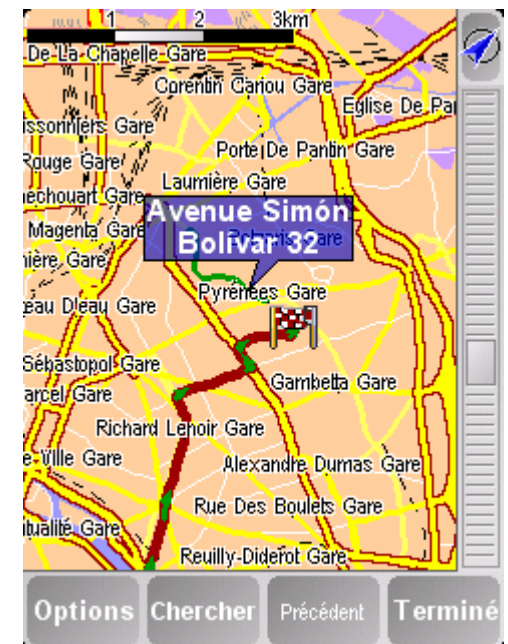
## Step IV – Plan a route



On the HOME screen, tap on the "Navigate to" icon



You have different options available to define your destination: Choose "Point on Map"



Tap on the map to define your destination



## Step IV – Plan a route



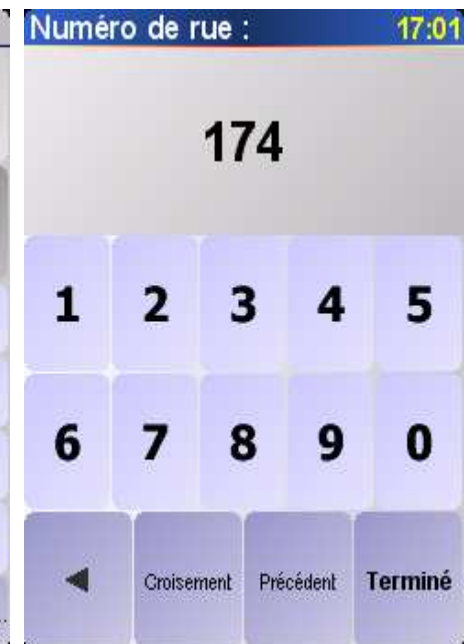
Or enter the precise "address" of your Destination



Define the City, then the Street



Then enter the number of your destination



# Parrot 3400 LS-GPS with HTC TyTN (equivalent of i-Mate JASJAM or Qtek 9600) and TomTom Navigator 6



## Step IV – Plan a route



The TomTom software calculates the journey to the destination you entered

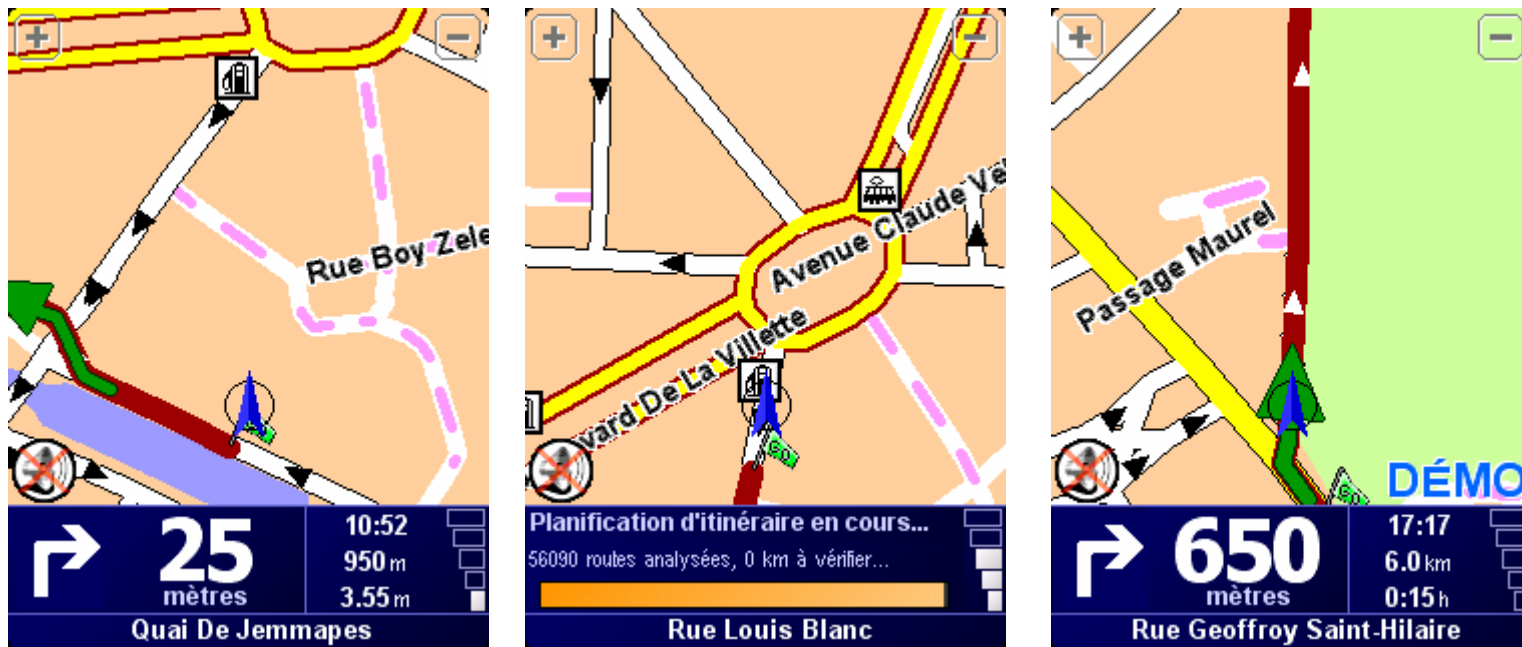
Tap on Details to simulate your itinerary, then "Display a demo of the itinerary", then select the speed of demo (200%)

The simulation is launched

Parrot 3400 LS-GPS with HTC TyTN (equivalent of i-Mate JASJAM or Qtek 9600) and TomTom Navigator 6



## Step IV – Plan a route



Navigation with "TomTom Navigator 6"