

# Parrot 3400 LS-GPS with HTC TyTN II and TomTom Navigator 6



Teste with ROM : 1.56.163.8



**HTC TyTN II  
with TomTom Navigator 6**



**Parrot 3400 LS-GPS**



# SETUP PROCEDURES

## Features

- I/ 3400 LS-GPS Pairing Procedure
- II/ GPS Connection
- III/ TomTom Navigator 6 Setup Procedure
- IV/ Plan a Route



# Features

- Two Bluetooth connections at the same time : GPS and Handsfree.
- Voice navigation instructions through PDA speakers ONLY
- Voice navigation instructions are NOT played DURING a call
- **Automatic** switch between GPS software and phone applications when using red and green car kits buttons (especially on “Incoming” and “Outgoing” Call)
- **Manual** return in navigation after: hanging up with the phone a call, picking up by the phone an “Incoming” call (then discrete mode)
- Automatic GPS connection (if option activated into Settings/GPS/Settings/ “Connection on Start Up”)

Mandatory : **Valid GPS signal** is needed to establish stable “GPS connection” between **Parrot 3400 LS-GPS with HTC TyTN II** (otherwise there are GPS disconnections)

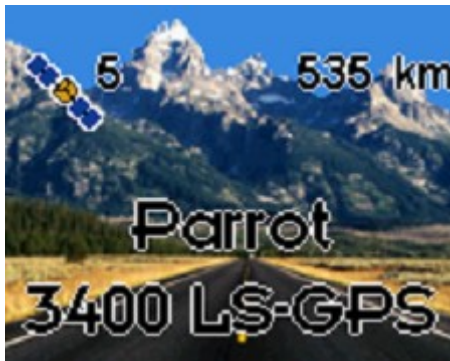


# Step I

-

## 3400 LS-GPS Pairing Procedure for Handsfree Connexion

## Step I – 3400 LS-GPS Pairing Procedure



Parrot 3400 LS-GPS  
"Idle Mode" with Valid  
GPS signal



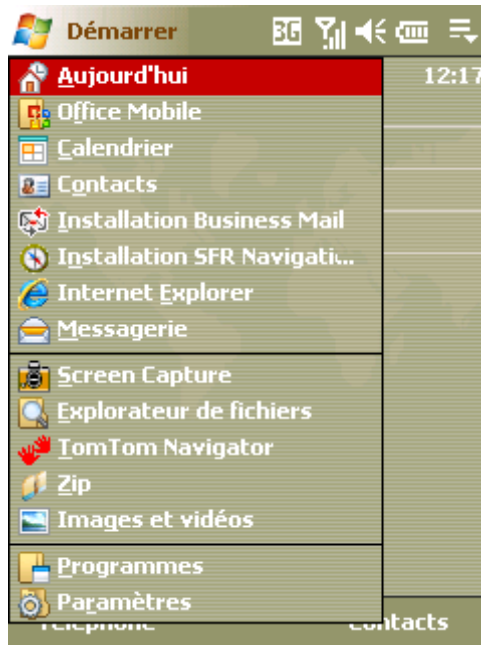
Please go into the menu  
"SETTINGS" of the carkit

## Step I – 3400 LS-GPS Pairing Procedure

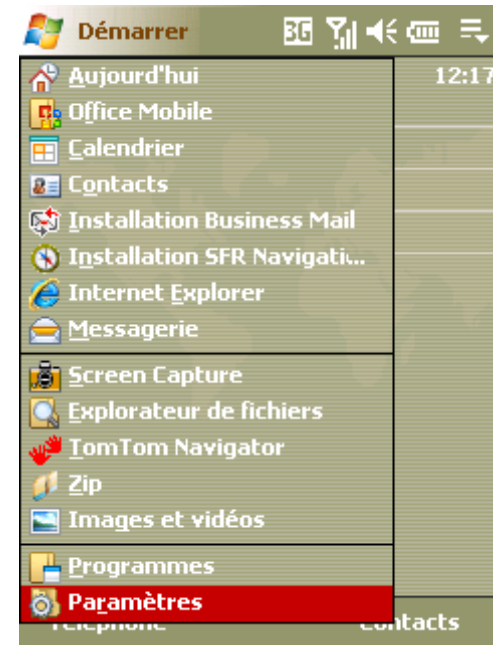


Then, go into the menu  
"PAIR WITH PHONE \ OTHERS PHONES". The  
carkit will display a random PIN code.

## Step I – 3400 LS-GPS Pairing Procedure

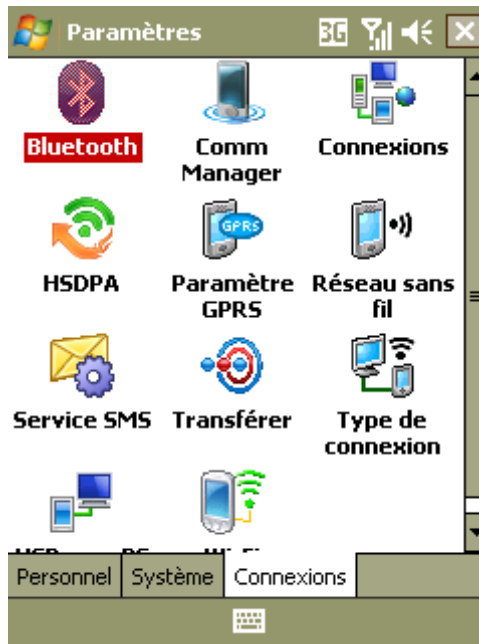


From the Smartphone Idle screen, please select the "START" menu. Select the "SETTINGS" command

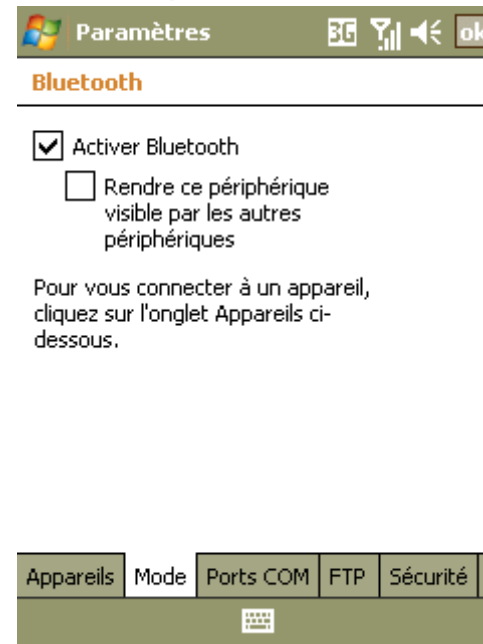


Select the "CONNECTIONS" tab

## Step I – 3400 LS-GPS Pairing Procedure

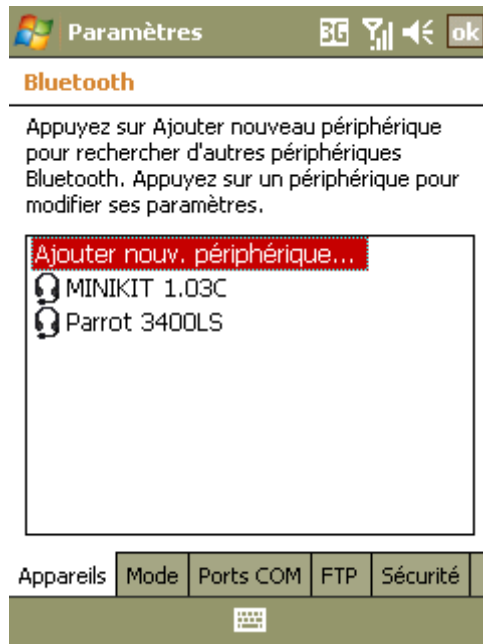


Select the "BLUETOOTH" icon



Please make sure that the Bluetooth is ON and then tap on the "DEVICES" tab

## Step I – 3400 LS-GPS Pairing Procedure



Select the "Add NEW DEVICE ..." command



HTC TyTN II searches for Bluetooth devices



Select your Parrot 3400 LS-GPS



## Step I – 3400 LS-GPS Pairing Procedure

Démarrer [Signal] [Volume] [Back]

**Entrer code d'authentification** [?]

Entrez un code d'authentification pour établir une connexion sécurisée à Parrot 3400LS.

Code authentif. : [\*\*\*\*]

123	[ ]	[ { }	7	8	9	#	%	=	[←]		
^	,	.	<	>	4	5	6	+	-	*	/
⊗	°	:	\		1	2	3	↓	↑	←	→
\$	¢	€	£	¥	(	0	)	→	Espace	←	

Annuler [Keyboard] Suivant

Position your Parrot into the mode “Settings / Pair a phone / Other phones”  
Enter the “PIN CODE” displayed by the car kit

Démarrer [Signal] [Volume] [Back]

**Paramètres de partenariat** [?]

Nom d'affichage: [Parrot 3400LS]

Sélectionnez les services à utiliser depuis l'appareil.

- Port série
- Mains libres

[Actualiser]

Précédent [Keyboard] Terminer

Activate the HandsFree and Serial Port services.

Paramètres [Signal] [Volume] [Back] [ok]

**Bluetooth**

Appuyez sur Ajouter nouveau périphérique pour rechercher d'autres périphériques Bluetooth. Appuyez sur un périphérique pour modifier ses paramètres.

Ajouter nouv. périphérique...

- Parrot 3400LS
- MINIKIT 1.03C

Appareils [Mode] [Ports COM] [FTP] [Sécurité]

[Keyboard]

Handsfree Pairing is done, a connection will be done automatically

## Step I – 3400 LS-GPS Pairing Procedure



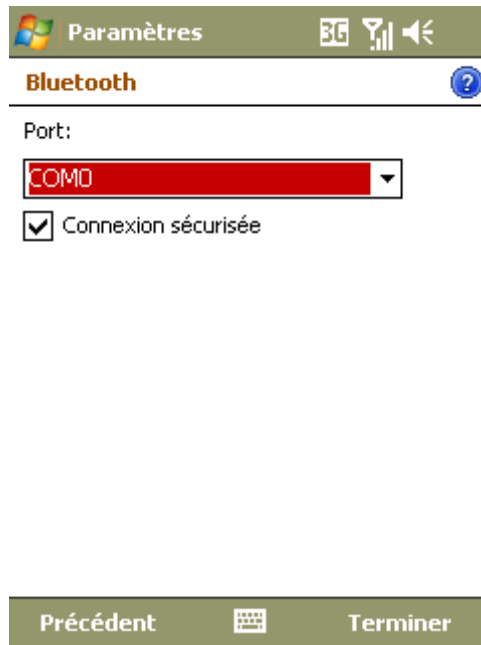
On the “COM PORTS” tab, please select the “NEW OUTGOING PORT” command



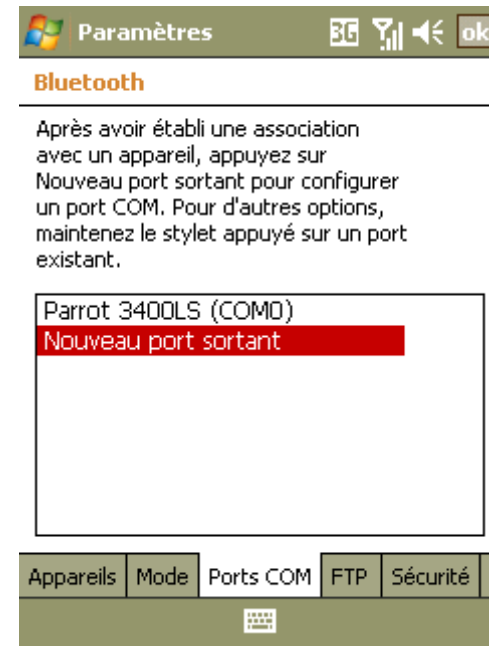
Select your Parrot 3400 LS-GPS among the diverse devices found.



## Step I – 3400 LS-GPS Pairing Procedure



Select the “COMx OUTGOING PORT” (preferentially COM6 or COM7 if possible)



An Outgoing COM port has been created



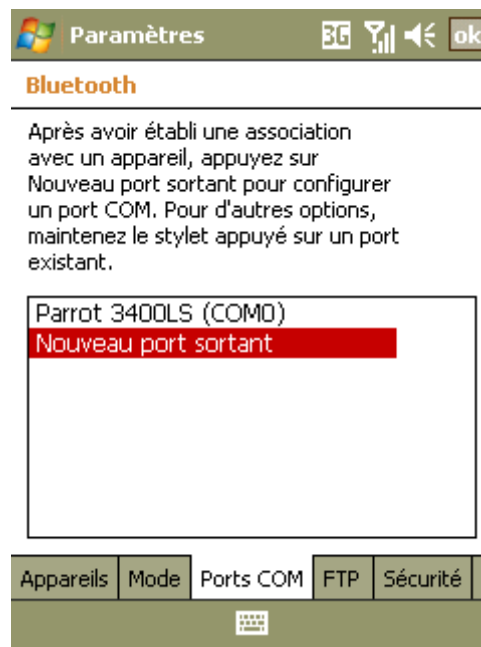
## **Step II**

-

**Pairing Procedure for GPS Connexion  
on the 3400 LS-GPS side**



## Step II – GPS Connection



HandsFree connection is established. Now, let us operate the GPS connection.

## Step II – GPS Connection



Navigate to the Parrot 3400 LS-GPS menu (the fourth one from the idle mode)



Go into the "ACTIVATE / DEACTIVATE" menu of the Parrot 3400 LS-GPS



Make sure the GPS feature is "Activated"



## **Step II – GPS Connection**

Press the carkit's RED BUTTON for at least three seconds. Your carkit and your mobile phone will be disconnected and a pop-up "Please connect GPS" appears on the Parrot 3400 LS-GPS



## Step III

-

# Pairing Procedure for GPS Connexion on the phone side

## Step III – TomTom Navigator 6 Setup Procedure



Please start your “TomTom Navigator 6” software in the menu “Programs”



“TomTom Navigator 6” start screen without GPS signal: you need to configure GPS reception – please tap on the screen

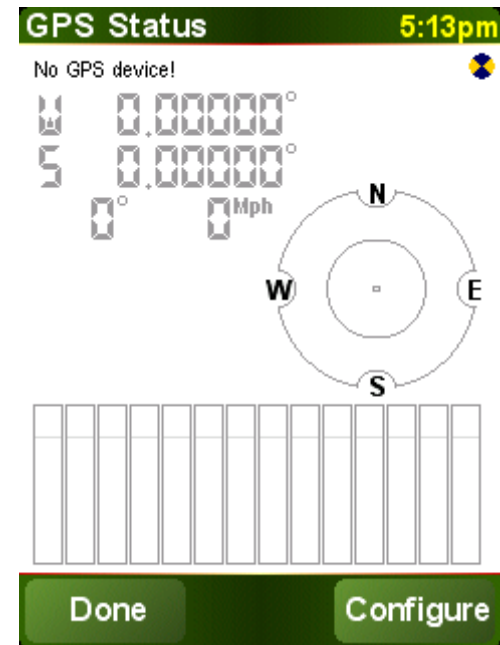
## Step III – TomTom Navigator 6 Setup Procedure



Tap on "Change Preference"

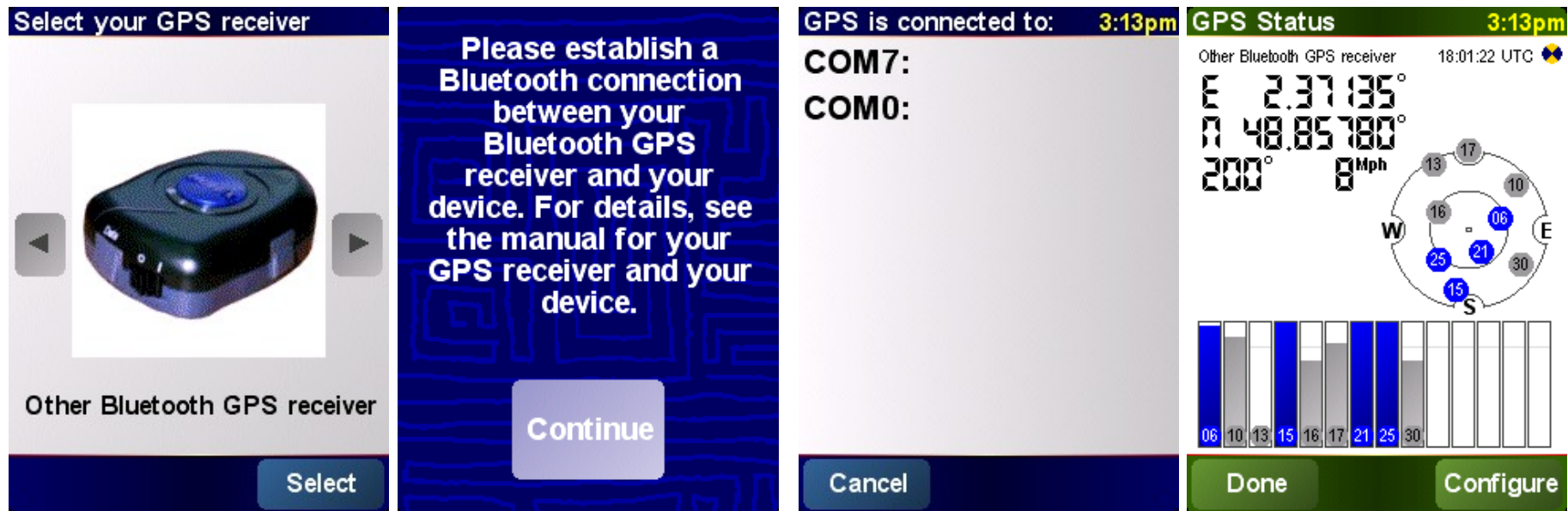


Select the "GPS Status" icon



Choose the "Configure" option and validate

## Step III – TomTom Navigator 6 Setup Procedure



The first screenshot shows a selection screen for a GPS receiver. It features a central image of a black Parrot 3400 LS-GPS receiver. Below the image is the text "Other Bluetooth GPS receiver" and a "Select" button.

The second screenshot is a blue screen with white text that reads: "Please establish a Bluetooth connection between your Bluetooth GPS receiver and your device. For details, see the manual for your GPS receiver and your device." A "Continue" button is at the bottom.

The third screenshot shows the "GPS Status" screen. It displays "GPS is connected to: 3:13pm". Below this, it lists "COM7:" and "COM0:". To the right, it shows "GPS Status 3:13pm" and "Other Bluetooth GPS receiver 18:01:22 UTC". The screen displays coordinates: E 2.37135°, N 48.85780°, and 200°. It also shows a speed of 8 Mph and a compass with directional markers (W, E, S, N) and numbers (06, 10, 13, 15, 16, 17, 21, 25, 30). At the bottom, there are "Cancel", "Done", and "Configure" buttons.

Please select "Other Bluetooth receiver" – then press on "continue"

Select the port you have just defined as the GPS channel beforehand ("COM0" for our example)

Your Parrot 3400 LS-GPS is now defined as the source of GPS signal for TomTom



## **Step IV**

-

**Use the GPS Connexion to  
navigate**

## Step IV – Plan a route



The screenshot displays the TomTom Navigator 6 interface in three stages of the route planning process:

- Main Menu 1 of 3 (3:13pm):** Shows options like "Navigate to...", "Find alternative", "TomTom Traffic", "Add Favorite", and "Change preferences". The current position is "Rue Du Chemin V...".
- Navigate to... (3:13pm):** Shows options like "Home", "Favorite", "Address", "Recent destination", and "Point of Interest". The destination is "Paris".
- Navigate to... (3:13pm):** Shows options like "City center", "Street and house number", "Zip Code", and "Cross street or intersection". The destination is "Paris".
- Paris (3:14pm):** Shows a map of Paris with a route highlighted. The estimated time is "0:05 hrs - 1.2M" for the "Fastest route". The version is "6.010".

On the HOME screen, tap on the "Navigate to" icon

You have different options available to define your destination.

Option #1: Choose "Address" and select "City Center" to define your destination

# Parrot 3400 LS-GPS with HTC TyTN II and TomTom Navigator 6

## Step IV – Plan a route

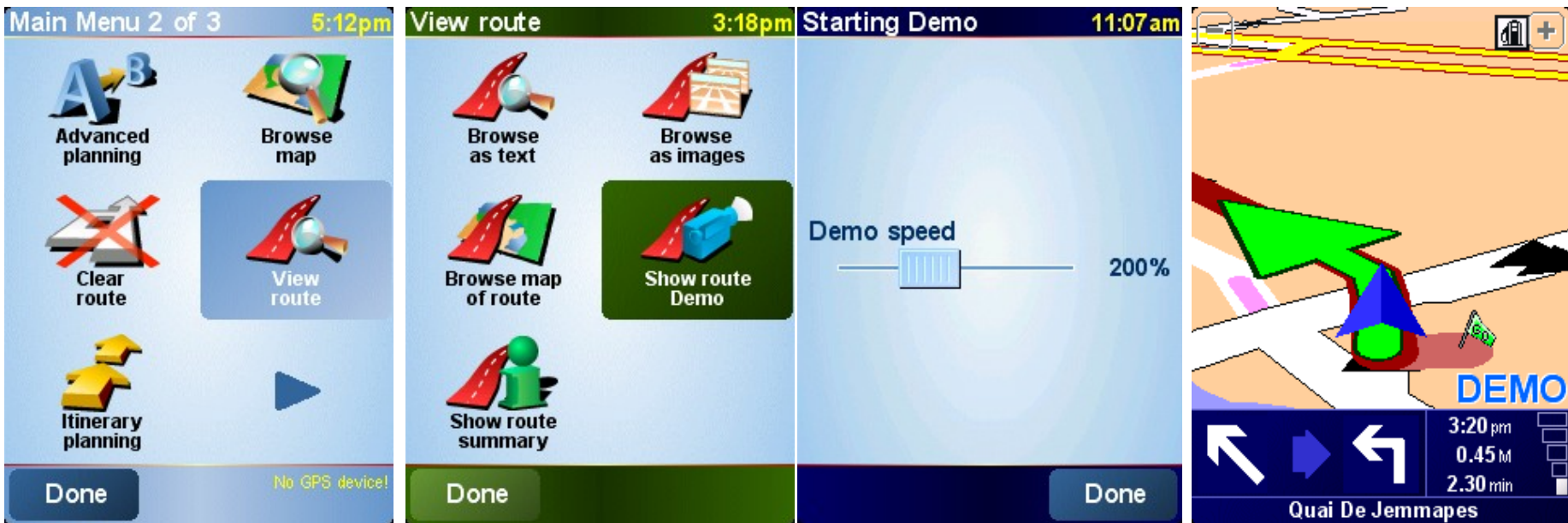


Option #2: Choose "Advanced Planning", meaning you need to define depart and destination points

Option #2: Choose "Street and house number" for each of these points

Option #2: enter the precise address. Define the City, then the Street, then the number of your destination

## Step IV – Plan a route



The TomTom software calculates the journey to the destination you entered

Tap on Details to simulate your itinerary, then "Display a demo of the itinerary", then select the speed of demo (200%)

The simulation is launched

## Step IV – Plan a route



Navigation with "TomTom Navigator 6"