

Parrot 3400 LS-GPS with HTC Cruise and TomTom Navigator 6



Teste with ROM : 1.25.405.1 WWE



**HTC Cruise
with TomTom Navigator 6**



Parrot 3400 LS-GPS



SETUP PROCEDURES

Features

- I/ 3400 LS-GPS Pairing Procedure
- II/ GPS Connection
- III/ TomTom Navigator 6 Setup Procedure
- IV/ Plan a Route



Features

- Two Bluetooth connections at the same time : GPS and Handsfree.
- Voice navigation instructions through PDA speakers ONLY
- Voice navigation instructions are NOT played DURING a call
- **Automatic** switch between GPS software and phone applications when using red and green car kits buttons (especially on “Incoming” and “Outgoing” Call)
- **Manual** return in navigation after: hanging up with the phone a call, picking up by the phone an “Incoming” call (then discrete mode)
- Automatic GPS connection (if option activated into Settings/GPS/Settings/ “Connection on Start Up”)

Mandatory : **Valid GPS signal** is needed to establish stable “GPS connection” between **Parrot 3400 LS-GPS with HTC Cruise** (otherwise there are GPS disconnections)

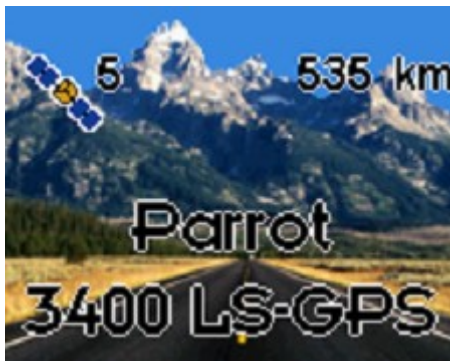


Step I

-

3400 LS-GPS Pairing Procedure for Handsfree Connexion

Step I – 3400 LS-GPS Pairing Procedure



Parrot 3400 LS-GPS
"Idle Mode" with Valid
GPS signal



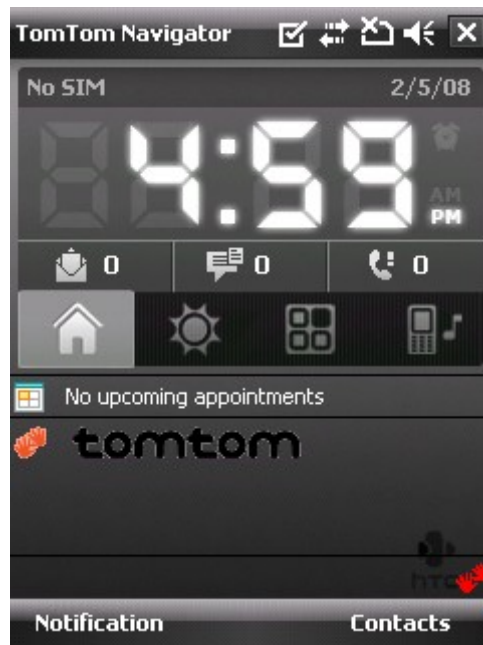
Please go into the menu
"SETTINGS" of the carkit

Step I – 3400 LS-GPS Pairing Procedure

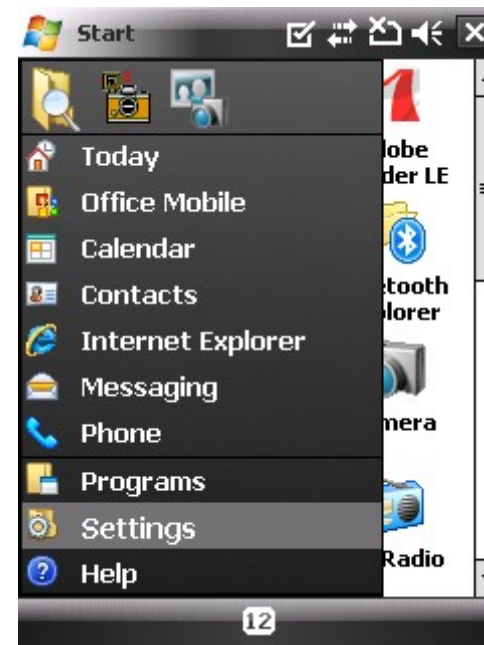


Then, go into the menu
"PAIR WITH PHONE \ OTHERS PHONES". The
carkit will display a random PIN code.

Step I – 3400 LS-GPS Pairing Procedure

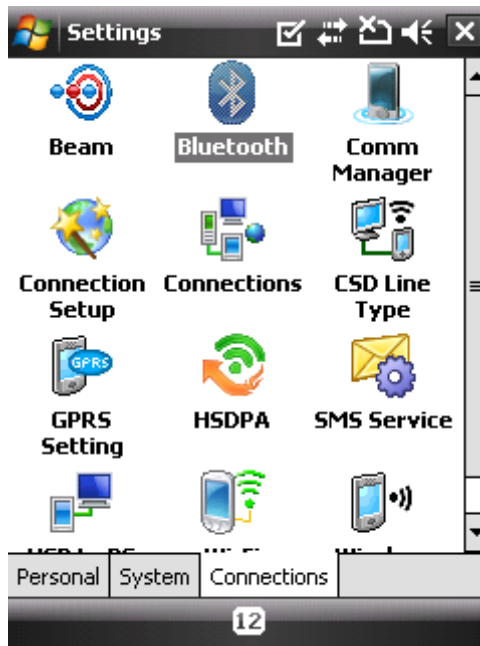


From the Smartphone Idle screen, please select the "START" menu. Select the "SETTINGS" command

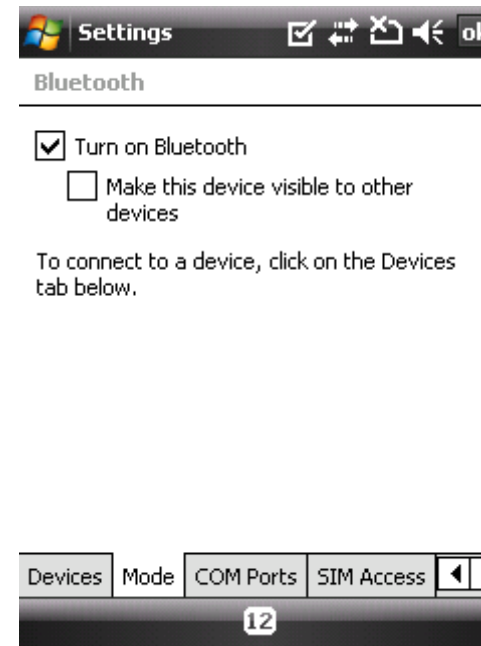


Select the "CONNECTIONS" tab

Step I – 3400 LS-GPS Pairing Procedure

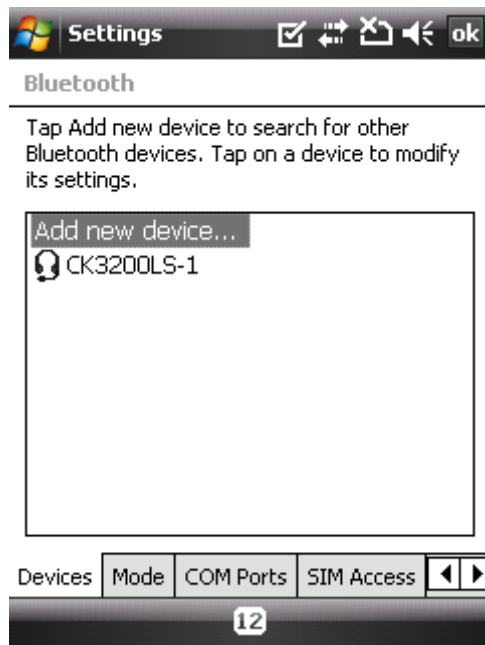


Select the "BLUETOOTH" icon



Please make sure that the Bluetooth is ON and then tap on the "DEVICES" tab

Step I – 3400 LS-GPS Pairing Procedure



Select the "Add NEW DEVICE ..." command



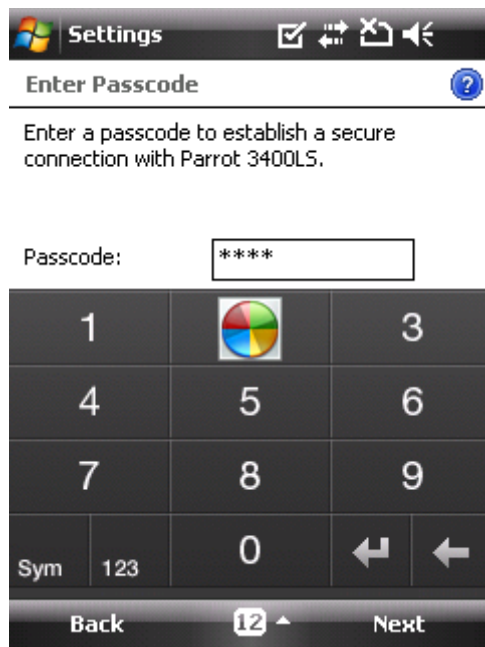
HTC Cruise searches for Bluetooth devices



Select your Parrot 3400 LS-GPS



Step I – 3400 LS-GPS Pairing Procedure

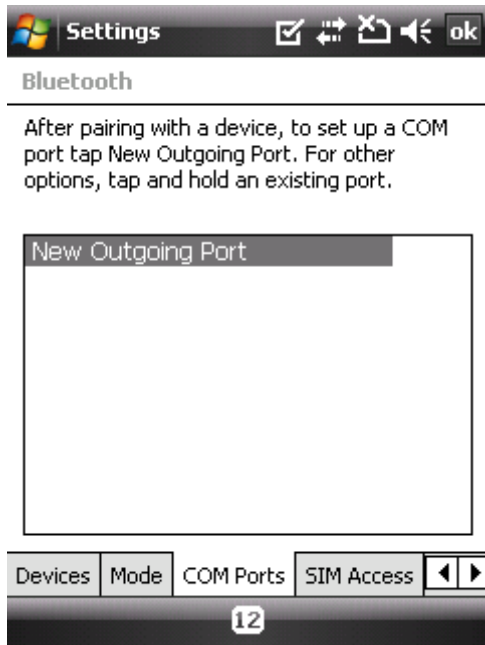


Position your Parrot into the mode "Settings / Pair a phone / Other phones"
Enter the "PIN CODE"
displayed by the car kit

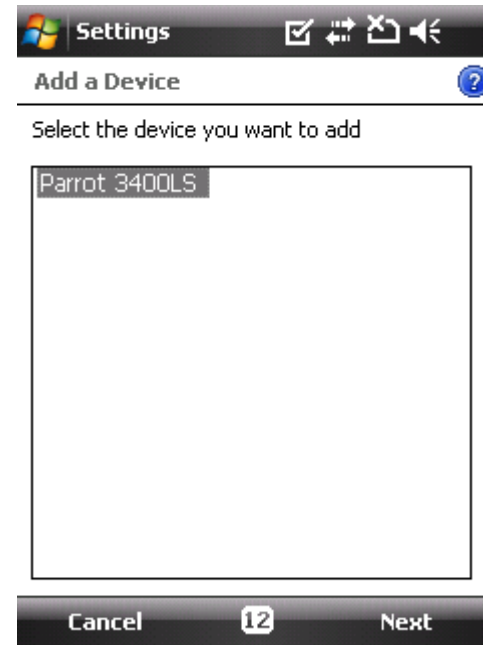
Activate the HandsFree
and Serial Port services.

Handsfree Pairing is done,
a connection will be done
automatically

Step I – 3400 LS-GPS Pairing Procedure



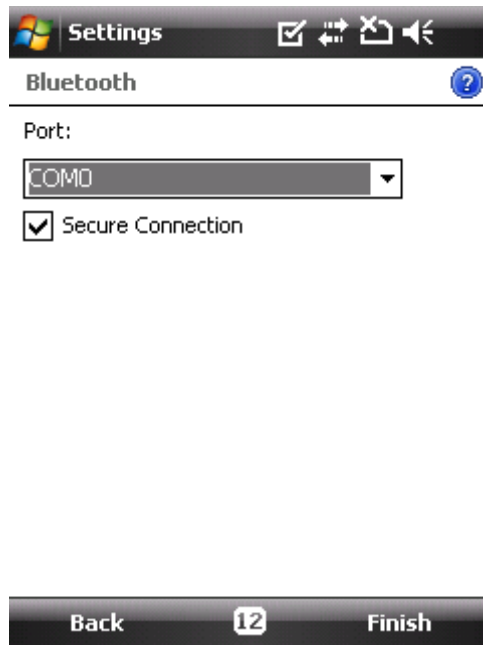
On the “COM PORTS” tab, please select the “NEW OUTGOING PORT” command



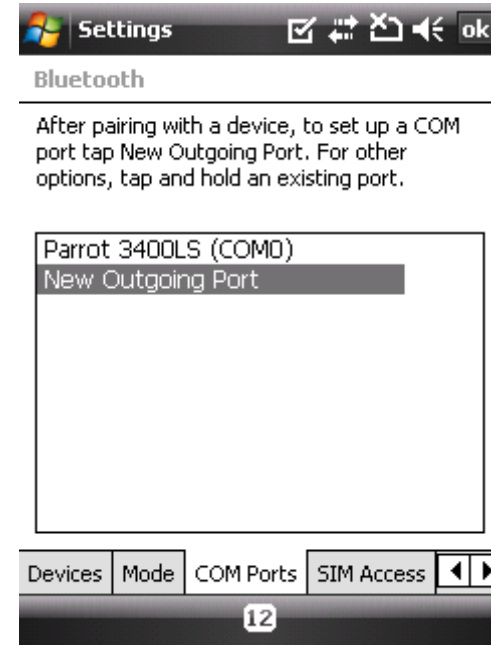
Select your Parrot 3400 LS-GPS among the diverse devices found.



Step I – 3400 LS-GPS Pairing Procedure



Select the “COMx OUTGOING PORT” (preferentially COM6 or COM7 if possible)



An Outgoing COM port has been created

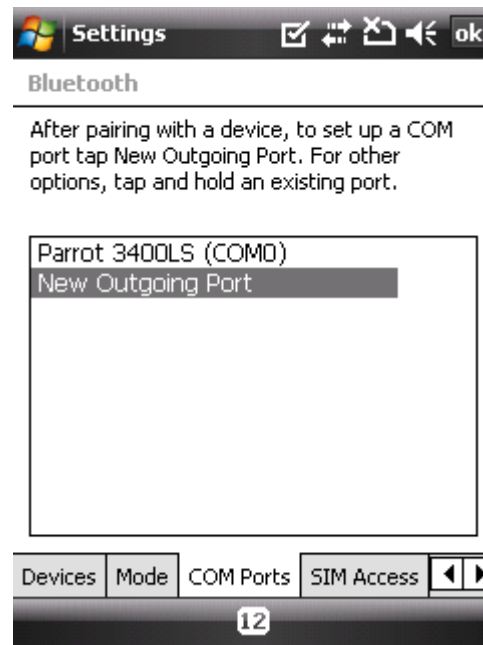


Step II

-

**Pairing Procedure for GPS Connexion
on the 3400 LS-GPS side**

Step II – GPS Connection



HandsFree connection is established. Now, let us operate the GPS connection.

Step II – GPS Connection



Navigate to the Parrot 3400 LS-GPS menu (the fourth one from the idle mode)



Go into the "ACTIVATE / DEACTIVATE" menu of the Parrot 3400 LS-GPS



Make sure the GPS feature is "Activated"



Step II – GPS Connection

Press the carkit's RED BUTTON for at least three seconds. Your carkit and your mobile phone will be disconnected and a pop-up "Please connect GPS" appears on the Parrot 3400 LS-GPS

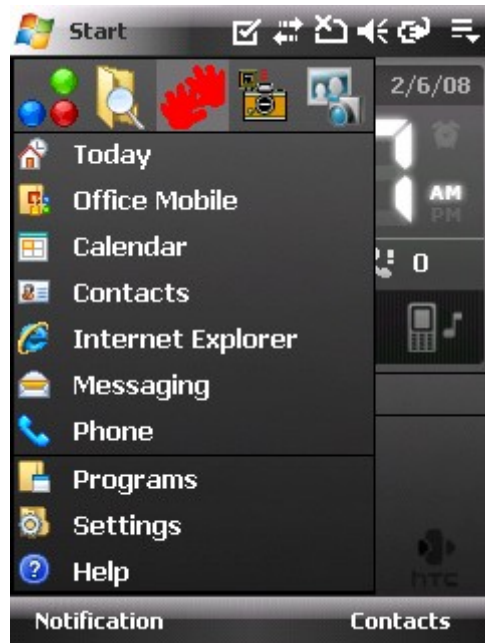


Step III

-

Pairing Procedure for GPS Connexion on the phone side

Step III – TomTom Navigator 6 Setup Procedure



Please start your “TomTom Navigator 6” software in the menu “Programs”

“TomTom Navigator 6” start screen without GPS signal: you need to configure GPS reception – please tap on the screen

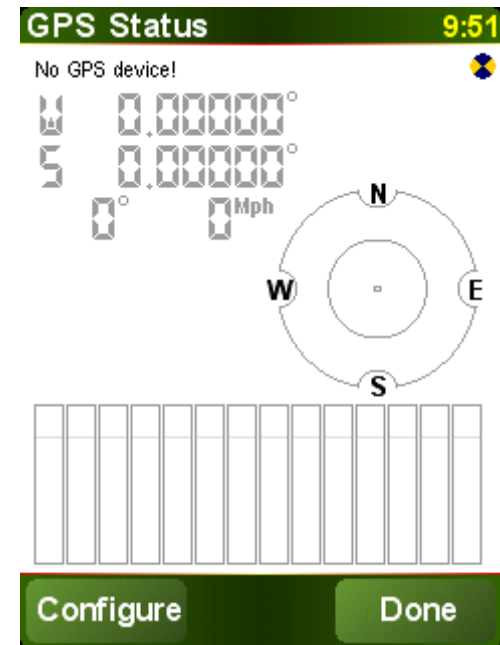
Step III – TomTom Navigator 6 Setup Procedure



Tap on "Change Preference"



Select the "GPS Status" icon

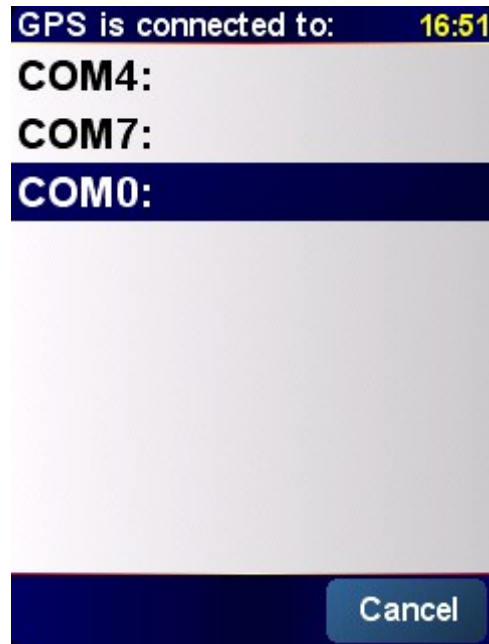


Choose the "Configure" option and validate

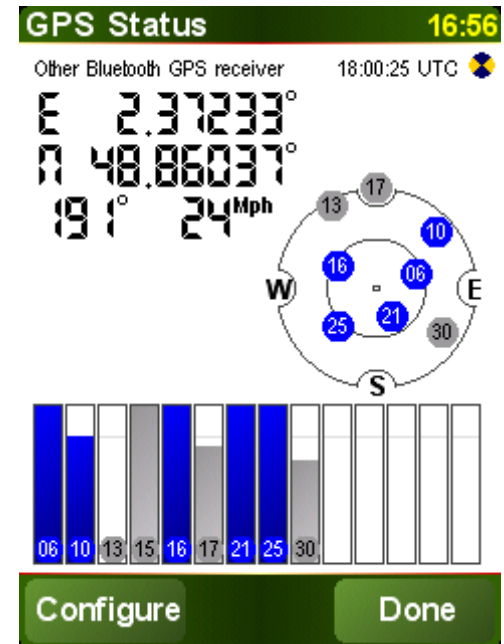
Step III – TomTom Navigator 6 Setup Procedure



Please select "Other Bluetooth receiver" – then press on "continue"



Select the port you have just defined as the GPS channel beforehand ("COM0" for our example)



Your Parrot 3400 LS-GPS is now defined as the source of GPS signal for TomTom



Step IV

-

**Use the GPS Connexion to
navigate**

Step IV – Plan a route



The image displays three sequential screenshots of the Parrot 3400 LS-GPS navigation interface:

- Screen 1 (Main Menu 1 of 3, 8:54):** Shows the main menu with options: "Navigate to...", "Find alternative", "TomTom Traffic", "Add Favourite", and "Change preferences". A "No GPS device!" warning is visible at the bottom left.
- Screen 2 (Navigate to..., Volume 80%, 9:52):** Shows the "Navigate to..." screen with options: "Home", "Favourite", "Address", "Recent destination", and "Point of Interest". The destination is set to "Bolivar Station, Pa...".
- Screen 3 (Navigate to..., 9:52):** Shows the "Navigate to..." screen with options: "City centre", "Street and house number", "Postcode", and "Crossing or intersection". The destination is set to "Paris (Paris)".
- Screen 4 (Paris, 9:53):** Shows the "Paris" screen with a map view. The destination is "Paris (Paris)". The route is calculated as "0:05 hrs - 1.2M Fastest route". The screen also displays "Charging" status, "3 satellites", and coordinates (2.36907° latitude, 48.85634° longitude). The version is 6.010.

On the HOME screen, tap on the "Navigate to" icon

You have different options available to define your destination.

Option #1: Choose "Address" and select "City Center" to define your destination

Parrot 3400 LS-GPS with HTC Cruise and TomTom Navigator 6

Step IV – Plan a route



The screenshots illustrate the following steps:

- Main Menu 2 of 3:** Shows options like 'Advanced planning', 'Browse map', 'Clear route', 'View route', and 'Itinerary planning'. The current position is 'Rue Saint-Antoine'.
- Depart from:** Shows options like 'Home', 'Favourite', 'Address', 'Recent destination', and 'Point of Interest'. The current position is 'Rue Saint-Antoine'.
- Depart from:** Shows options like 'City centre', 'Street and house number', 'Postcode', and 'Crossing or intersection'. The current position is 'Rue Saint-Antoine'.
- Street:** Shows a list of streets including 'Paris (Paris)', 'Quai De Jemmapes', and 'Bolivar Station'. A keyboard is visible for text entry.
- Pick a destination:** Shows options like 'Home', 'Favourite', 'Address', and 'Recent destination'. A keyboard is visible for text entry.
- Pick a destination:** Shows options like 'City centre', 'Street and house number', 'Postcode', and 'Crossing or intersection'. A keyboard is visible for text entry.
- Street:** Shows a list of streets including 'Bolivar Station', 'Paris (Paris)', and 'Quai De Jemmapes'. A keyboard is visible for text entry.
- House number:** Shows a numeric keypad with the number '182' entered.
- What type of route should be planned...:** Shows options for route type: 'Fastest route' (selected), 'Shortest route', 'Avoid motorways', 'Walking route', 'Bicycle route', and 'Limited speed'.
- Quai De Jemmapes 182, Paris (Paris):** Shows a map with the route highlighted. The estimated time is '0:04 hrs - 0.90M' for the 'Fastest route'. A 'Details' button is visible.

Option #2: Choose "Advanced Planning", meaning you need to define depart and destination points

Option #2: Choose "Street and house number" for each of these points

Option #2: enter the precise address. Define the City, then the Street, then the number of your

Step IV – Plan a route

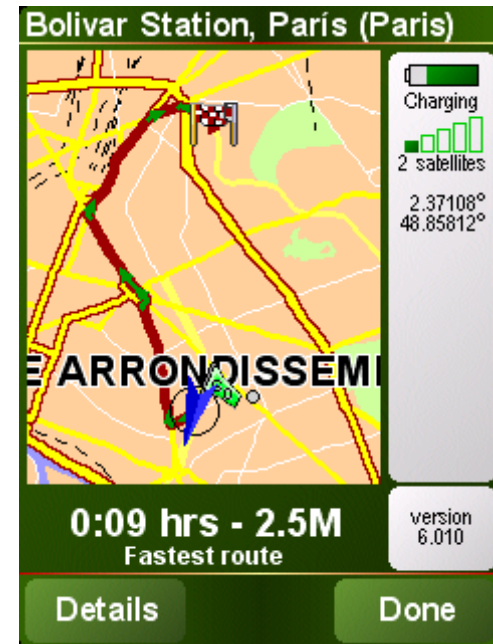
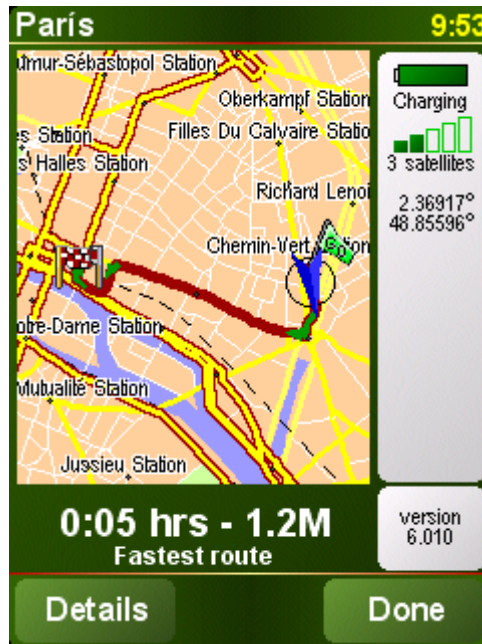


The TomTom software calculates the journey to the destination you entered

Tap on Details to simulate your itinerary, then "Display a demo of the itinerary", then select the speed of demo (200%)

The simulation is launched

Step IV – Plan a route



Navigation with "TomTom Navigator 6"